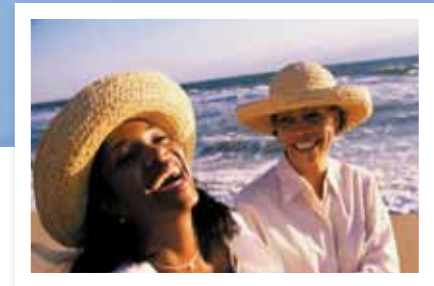


INTERVENTIONAL BREAST BIOPSY SOLUTIONS

The Right Biopsy Solution for every patient



HOLOGIC[®]
The Women's Health Company



The **Total Solution** to meet all your breast biopsy needs



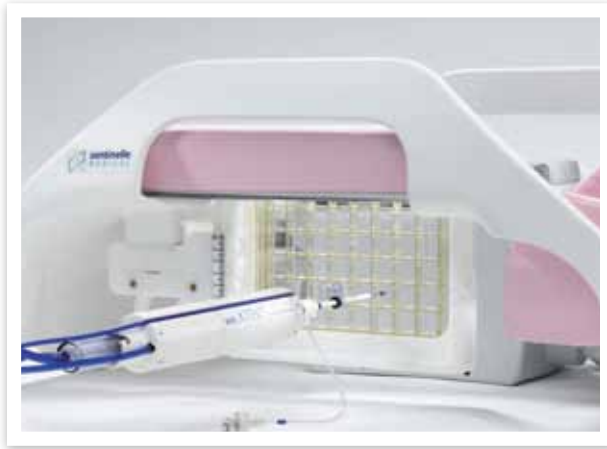
Hologic breast biopsy solutions continue to lead the way in offering physicians a more compassionate and clinically effective alternative to open surgical biopsy.

We are consistently delivering the advances that physicians are looking for in breast biopsy procedures: greater precision and control, fast acquisition of multiple tissue samples, pain and fluid management, and more.

Equally important, Hologic has delivered the first-to-market, all-in-one biopsy platform that supports all imaging modalities: MRI, ultrasound and stereotactic. Our goal is to give you every option to choose the appropriate modality for any patient. Our unwavering commitment is to help you make minimally invasive breast biopsy the standard of care for women everywhere.

MRI-guided breast biopsy

Pioneering and leading the market for high-risk patients



ATEC MRI Biopsy Device and Sentinel Coil

Hologic developed the breakthrough that has made MRI-guided breast biopsy possible.

More than **900** facilities in the U.S. have used our solutions to perform more than **100,000** breast MRI biopsy procedures. With Hologic, physicians have reduced the typical procedure time to under 30 minutes, greatly improving patient comfort and optimizing costly magnet time. We are proud to support physicians in offering one of the most exciting developments in breast cancer intervention for those at greatest risk for the disease.

The teaming of Hologic and Sentinelle now allows physicians an improved solution in early breast cancer detection and accurate intervention. The innovative design of the Sentinelle breast coil is an example of our continued drive to provide best in class products to meet the needs of our customers.

Benefits

Speed

- Simple one minute set-up and one minute clean-up
- Tissue acquisition occurs every 4.5 seconds, typically lasting less than 30 seconds total
- Easily delivers local anesthetic without interruption

Patient Spectrum

- Accommodates the broadest range of patients
- Multiple lesions in a single gadolinium session
- ATEC®'s hemispherical tip Access needle.
- Supports grid and pillar/post targeting methods

Safety

- Documented compatibility with 3T magnets
- Only MRI conditional biopsy device on market

Fluid Management

- Closed system and hemostatic introducer valve reduces contaminant risk in magnet and MRI suite
- Constant aspiration and saline lavage helps ensure a core with every cycle

Accuracy

- Only MRI biopsy device with clinically-proven accuracy
- Constant aspiration provides increased tissue acquisition capability
- Saline lavage feature flushes out gadolinium for better post-biopsy images



SureSight™ Introducer Localization Set

ATEC® MRI Biopsy Devices

Our MRI needles allow for a fast, safe and simple MRI-guided biopsy. ATEC needles have a notably fast acquisition time - resulting in a short procedure time.

Introducer Localization Sets (ILS)

Designed exclusively for our MRI procedures, the ILS aids in easy lesion targeting and biopsy.

Hologic's Newest ILS the SureSight Obturator

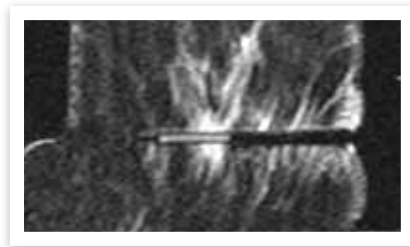
This new obturator simplifies targeting under MRI guidance allowing for the ability to easily identify your biopsy location.

ATEC MRI Access Biopsy Device

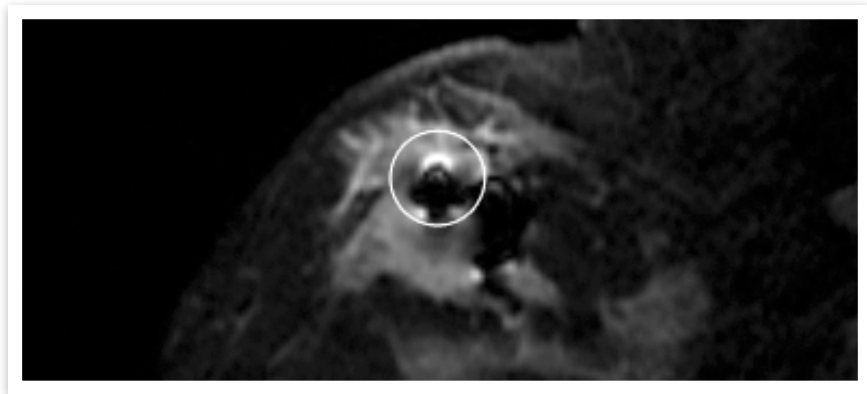
Designed with a hemispherical tip for access to challenging lesions.



ATEC MRI Access Needle



SureSight in the Axial View



SecurMark under MRI

SecurMark® MRI Biopsy Site Markers

- Rigid end-deploy delivery system
- Comprised of two components
 - Bio-absorbable suture-like netting material
 - Bio-compatible metal
- Three shapes available



SecurMark in Netting



SecurMark SS Shape 1 (buckle)



SecurMark SS Shape 2 (infinity)



SecurMark SS Shape 3 (stoplight)

TriMark® Biopsy Site Markers

- Rigid side-deploy delivery system
- Bio-compatible titanium marker
- Two shapes
- Multiple deployment lengths



TriMark Shape One (cork)



TriMark Shape Two (hourglass)

Stereotactic-guided breast biopsy

Offering the industry's first complete solution and a broad patient spectrum



Eviva Biopsy Device on a MultiCare® Platinum Table



Eviva Biopsy Device on the Selenia® Dimensions® with Affirm™ System

Hologic continues to innovate and make stereotactic-guided breast biopsy an even more effective and trusted breast biopsy modality.

We are the first to deliver a complete solution to our customers: an upright stereotactic biopsy system or prone stereotactic biopsy system, a vacuum-assisted breast biopsy system with the widest variety of needle choices to address the broadest spectrum of patients, and our site marker system providing accurate delivery to the biopsy site.

Using the complete Hologic stereotactic-guided breast biopsy solution, total tissue acquisition time is less than 30 seconds, with integrated pain management. This improvement in efficiency and compassion makes “*this won't take long*” a reality for anxious patients.

Eviva® and ATEC® Benefits

Speed

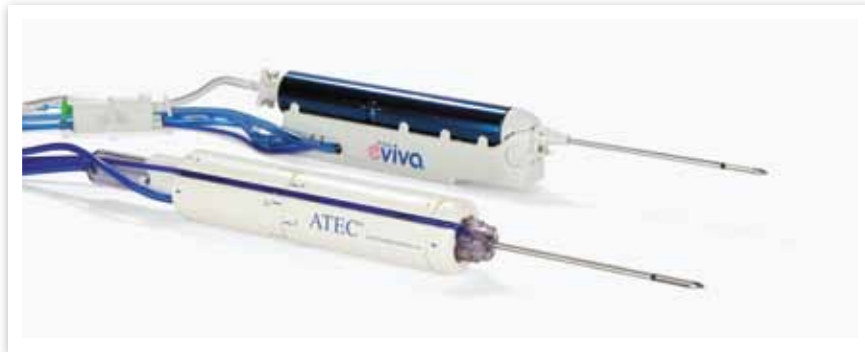
- Simple one minute set-up and one minute clean-up
- Tissue acquisition occurs every 4.5 seconds, typically lasting less than 30 seconds total
- Easily delivers local anesthetic without interruption

Fluid Management

- Use of saline results in high quality tissue samples
- Combination of saline lavage and constant aspiration helps ensure a core with every cycle

Safety

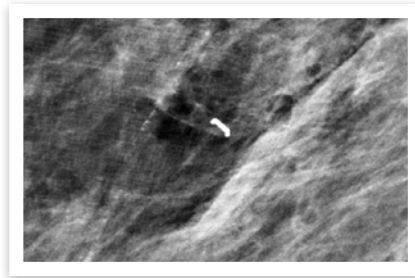
- Fully closed system minimizes blood on stereotactic tables and reusable adapters
- Fully disposable biopsy device and tubing minimizes staff exposure to biohazard
- Y-Valve enables the clinician to deliver local anesthetic to the biopsy site without interruption during the biopsy procedure.



Eviva and ATEC Biopsy Devices



Eviva Biopsy Device with Introducer and Marker



SecurMark Under Mammography

SecurMark in Netting



SecurMark Titanium Shape 1 (mini cork)



SecurMark Titanium Shape 2 (top hat)



SecurMark SS Shape 1 (buckle)



SecurMark SS Shape 2 (infinity)



SecurMark SS Shape 3 (stoplight)

Eviva® Biopsy Device

Our enhanced technology offering, Eviva provides new features not available in our legacy stereotactic biopsy device.

Completely Integrated Biopsy Solution

- End deploy marker system with SecurMark for Eviva (Five shapes available)
- Firing mechanism removed from adapter and incorporated into the device
- Compatible with ATEC consoles: Sapphire and Pearl

Patient Spectrum

- Compatible with all stereotactic systems for superior targeting and lesion access
- Petite needle offering allows for compression to **16mm**

ATEC® Biopsy Device

Hologic's flagship stereotactic biopsy device offering, the ATEC device allows for confidence in each procedure.

Core Size

- Exceptional core quality achieved with integrated fluid management
- True gauge size for large core sample with minimized incision

Needle Offerings

- Array of needle options allows physicians to serve a broader patient spectrum

SecurMark® for Eviva and ATEC Biopsy Site Markers

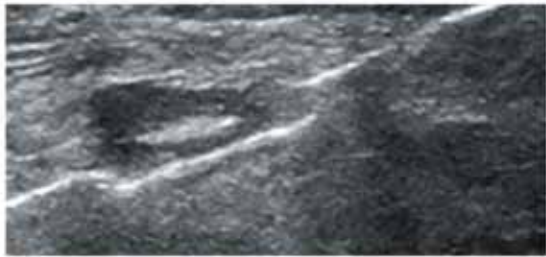
- Comprised of two components
 - Bio-absorbable suture-like netting material
 - Bio-compatible titanium or stainless steel
- Five shapes available
- Multiple deployment lengths

TriMark® Biopsy Site Markers

- Rigid side-deploy delivery system
- Bio-compatible titanium marker
- Two shapes available for ATEC; One shape available for Eviva
- Multiple deployment lengths

Ultrasound-guided breast biopsy

Breast biopsy solutions offering clinically outstanding interventional options



Celero with Aperture Open

Hologic offers physicians more intervention choices for ultrasound-guided breast biopsy for diagnostic review, from sampling of breast tissue to partial or complete removal of the tissue of interest.

Our ultrasound-guided breast biopsy solutions support physician preference to an extent never before possible, by fewer insertions which means less tissue for accurate diagnosis. Our goal is to support compassionate intervention for all types of lesions, providing greater comfort for patients.

ATEC® Benefits

Speed

- Simple one minute set-up and one minute clean-up
- Tissue acquisition occurs every 4.5 seconds, typically lasting less than 30 seconds total
- Easily delivers local anesthetic without interruption

Fluid Management

- Use of saline results in high quality tissue samples
- Combination of saline lavage and constant aspiration helps ensure a core with every cycle

Safety

- Fully closed ATEC system reduces contamination risk
- Fully disposable biopsy device and tubing minimizes staff exposure to biohazard

Removal

- ATEC in ultrasound is FDA cleared for removal of benign breast tissue for diagnostic sampling

Celero® Benefits

Patient Spectrum

- Trocar tip provides smooth penetration to lesion
- Better control for challenging procedures such as those close to chest wall, in axilla or near implants

Cores

- Core size is typically two times the size of other SLC devices
- Consistent core quality
- Fewer insertions needed for accurate diagnosis

Confirmation

- Two firing modes provide flexibility for precise control and verification of sample area
- Aperture clearly visible prior to tissue acquisition



ATEC Biopsy Device

ATEC® Biopsy Device

ATEC under ultrasound-guidance is FDA-cleared for removal of benign breast tissue for diagnostic sampling.

Celero® Biopsy Device

Better access, larger cores, better confirmation, the Celero is the first vacuum-assisted spring-loaded core device designed specifically for use under ultrasound-guidance

Abrivo™ Biopsy Device

The Abrivo is an ergonomic 14 gauge spring-loaded cored breast biopsy device that is lightweight and simple to use with optional coaxial.



Celero Breast Biopsy System

SecurMark® for Celero & SecurMark® Ultrasound Biopsy Site Markers

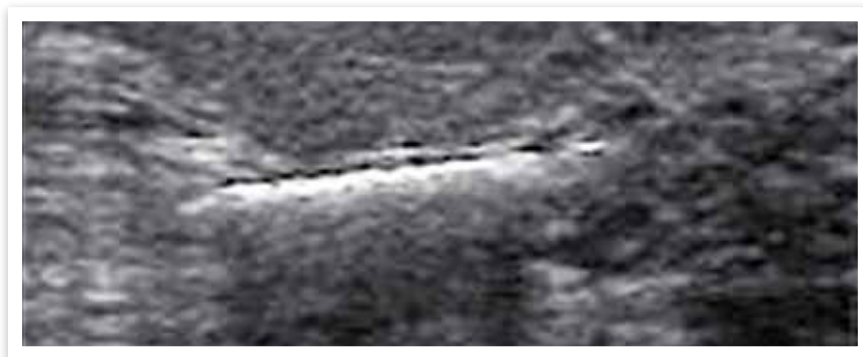
- Rigid end-deploy delivery system
- Comprised of two components
 - Bio-absorbable suture-like netting material
 - Bio-compatible metal
- Two Titanium shapes available for SecurMark for Celero
- Three Stainless Steel shapes available for SecurMark Ultrasound



SecurMark Shape One

CeleroMark™ Biopsy Site Markers

- Rigid end-deploy delivery system
- Beveled tip
- Two Titanium shapes



SecurMark Under Ultrasound

Our Total Solution Offerings by Imaging Modality

Providing exceptional breast biopsy alternatives for all your patients

Despite the cost and trauma to both facilities and patients, open surgical breast biopsies are still performed by the hundreds of thousands every year. At Hologic, we believe that every woman faced with the possibility of breast cancer deserves a diagnostic procedure that is compassionate, safe and accurate. We believe that every physician deserves a platform that provides more choices and confident results.

Our focus on women's health means that all of our global resources are dedicated to providing the meaningful innovation and exceptional support you require.



MRI



Stereotactic Prone



Stereotactic Upright



Ultrasound



Redefining Industry Standards

Vision. Innovation. Results.

Hologic is dedicated to advances in medical technologies that contribute to longer, healthier lives for women. We were the first company to bring imaging and intervention together, delivering a continuum of care options for screening, diagnosis and treatment. In the field of breast biopsy, we will continue to work with physicians to discover and deliver more compassionate and effective solutions for women.

| 2002 | 2003 | 2004 | 2005 | 2006 | 2007 | 2008 | 2009 | 2010 | 2011 |
|--|---|--|--|---|---|---|--|--|--|
| <p>ATEC® System First compassionate, minimally invasive breast biopsy option utilizing a closed system</p> <p>First ever petite needle Specially designed for use on women with thin breasts</p> | <p>ATEC® MRI First MRI-guided breast biopsy system</p> | <p>ATEC® MRI Access First MRI biopsy needle with hemispherical tip to increase patient spectrum</p> <p>ATEC® Sapphire First multimodality breast biopsy system for ultrasound, MRI, stereotactic</p> | <p>TriMark® Biopsy Site Markers</p> | <p>TriMark® Second Shape Biopsy Site Markers</p> | <p>Celero® First ultrasound-guided spring-loaded core biopsy device with vacuum assistance</p> <p>CeleroMark™ Biopsy Site Markers</p> | <p>Eviva® First completely integrated stereotactic breast biopsy system</p> <p>SecurMark® A complete family of biopsy site markers providing superior visualization</p> <p>ATEC® with Naviscan® PEM imaging First procedures performed in March 2008</p> | <p>TriMark® for Eviva Biopsy Site Markers</p> <p>ATEC® with the Dilon® BSGI system First procedures performed in December 2009</p> | <p>SecurMark® Distinct Shapes Biopsy Site Markers</p> <p>Eviva® for Upright Stereotactic systems</p> <p>MultiCare® Platinum Maximum Comfort Package</p> <p>Sentinel® Breast Coils Hologic acquires Sentinel® Medical</p> | <p>Affirm™ Breast Biopsy Guidance System, the newest stereotactic upright biopsy system offering from Hologic</p> <p>*available for use with ATEC and Eviva</p> <p>More patient-focused solutions to come...</p> |

Hologic is defining the standard of care in women's health. Our technologies help doctors see better, know sooner, reach further and touch more lives. At Hologic, we turn passion into action, and action into change.

BREAST IMAGING SOLUTIONS | INTERVENTIONAL BREAST SOLUTIONS | BONE HEALTH
PRENATAL HEALTH | GYNECOLOGIC HEALTH | MOLECULAR DIAGNOSTICS

HOLOGIC®

The Women's Health Company

United States / Latin America

35 Crosby Drive
Bedford, MA 01730-1401 USA
Tel: +1.781.999.7300
Fax: +1.781.280.0668
www.hologic.com

Europe

Everest (Cross Point)
Leuvensesteenweg 250A
1800 Vilvoorde, Belgium
Tel: +32.2.711.4680
Fax: +32.2.725.2087

Asia Pacific

7th Floor, Biotech Centre 2
No. 11 Science Park West Avenue
Hong Kong Science Park
Shatin, New Territories
HONG KONG
Tel: +852.3748.7700
Fax: +852.3526.0723

Australia

Hologic (Australia) Pty Ltd
Suite 402, Level 4
2 Lyon Park Road
Macquarie Park NSW 2113
Australia
Tel: +61.2.9888.8000
Fax: +61.2.9870.7555