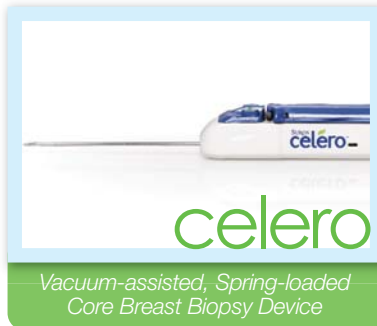


Comprehensive Solutions in Ultrasound-guided Breast Biopsy



Outstanding Clinical Interventional Options

Hologic's breast biopsy solutions continue to lead the way in offering physicians a more compassionate and clinically effective alternative to open surgical biopsy. We are consistently delivering the advances that physicians are looking for in breast biopsy procedures: precision and control, fast acquisition of multiple tissue samples, and more.

ATEC® Breast Biopsy Device

ATEC® Patient Inspired, Physician Focused

The ATEC vacuum-assisted breast biopsy system has been designed for radiologists and surgeons who consider compassionate patient care, confident clinical results, and economic value, essential elements in minimally invasive breast biopsy. The ATEC system provides further compassion with **FDA clearance for partial & complete removal of benign breast tissue.**

Fast

- Tissue acquisition occurs every **4.5 seconds**, typically lasting less than 30 seconds total.
- Easily delivers local anesthetic without interruption.
- Combination of saline lavage and constant aspiration helps ensure a core with every cycle.

Safe

- Fully closed ATEC system reduces contamination risk.
- **Fully disposable** handpiece and tubing minimizes staff exposure to biohazard.

Simple

- No software to program console
- Simple **one minute** set-up and clean-up.
- **Multiple needle options** for diagnostic tissue sampling & benign breast tissue removal to address a wide spectrum of patients.



ATEC console and breast biopsy device



ATEC breast biopsy devices

“The ATEC has improved our breast biopsies by providing greater diagnostic confidence and greater comfort to our patients.”

- Gerard Ballanco, Jr., MD,
Opelousas General Hospital,
Opelousas, LA.

Compassion Patients Deserve, Quality Physicians Demand

celero[®]
Breast Biopsy Device

Celero[®] More Control, Large Cores, Better Access

Celero is the first vacuum-assisted, spring-loaded core device designed for use under ultrasound. With the Celero breast biopsy device you can achieve your goals with fewer samples and larger quality cores, which means fewer needle insertions and a more compassionate breast biopsy for your patient versus traditional spring-loaded core devices.

Better Cores

- Core size more than **2x the size** of other SLC devices*.
- Fewer insertions needed for accurate diagnosis.
- Consistent core quality.

Better Access

- 11° trocar tip provides **smooth penetration** to lesion while eliminating deflection.
- Better control for challenging procedures: chest wall, axilla and implants.

Better Confirmation

- Two firing modes provide flexibility for precise control and verification of sample area.
- Vacuum technology holds tissue in the aperture ensuring large core sample.
- **Aperture clearly visible** prior to tissue acquisition.



Celero sample



Spring-loaded core sample



Celero breast biopsy device



Aperture open and ready for tissue acquisition

*Data on file at Hologic, Inc.

19103 Reimbursement Applicable



Celero breast biopsy system

“I LOVE the Celero needles. They are absolutely amazing. I feel that these needles will change, for the better, the way we do breast biopsies.”

- Serena L. Viturawong
Breast Care Center, Mercy Medical
Chicago, IL

Additional Ultrasound Offerings

abrivo™

Breast Biopsy Device

Abrivo™ Simple and Accurate

The Abrivo is an ergonomic 14 gauge spring-loaded core breast biopsy device. An Abrivo Introducer is available for a single-entry point to the area of interest. Lightweight and simple to use, the Abrivo complements and completes Hologic's ultrasound breast biopsy offering.

Simple

- Two firing positions for comfortable hand placement.
- Ergonomic, lightweight device to fit all hand sizes.
- Simple **1, 2, 3 to acquire tissue.**

Accurate

- **Echogenic tip** allows for accurate placement at area of interest.
- 19mm aperture provides sufficient tissue acquisition.

19102 Reimbursement Applicable



Abrivo breast biopsy system

SECURMARK®

Biopsy Site Markers

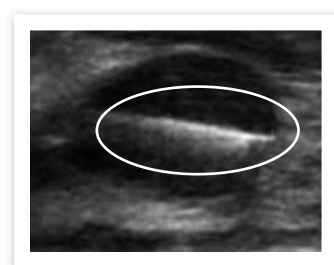
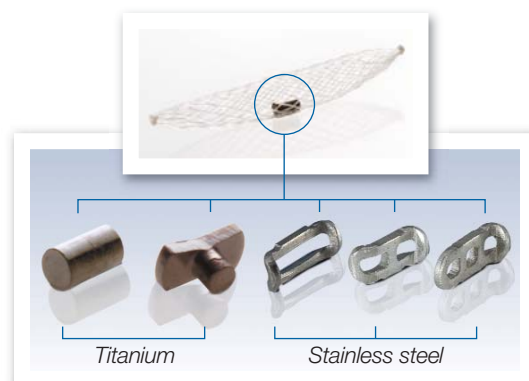
Visibility at time of deployment assures physician of marker placement under ultrasound. Hologic offers the following markers to be used with our ultrasound-guided biopsy devices.

SecurMark® ATEC®

- Bio-absorbable netting surrounds bio-compatible permanent marker.
- Two (2) titanium and three (3) stainless steel shapes available.
- Deployed to area of interest through the biopsy device needle.

SecurMark® Celero® and SecurMark Ultrasound

- Bio-absorbable netting surrounds bio-compatible permanent marker.
- Two (2) titanium and three (3) stainless steel shapes available.
- End deploy technique with bevel tip allows for free-hand use.



SecurMark under ultrasound

ATEC, Celero, Abrivo Ultrasound-guided Breast Biopsy Solutions

Innovation starts with the willingness to listen and the ability to understand. By leveraging the knowledge and insight of leading physicians, technologists and administrators, Hologic provides more choices for ultrasound-guided breast biopsy, from partial to complete removal of benign lesions, to sampling of breast tissue for diagnostic review. **Our goal is to support compassionate intervention for all patients.**



Vacuum-assisted Breast Biopsy System



Vacuum-assisted, Spring-loaded Core Breast Biopsy Device



Spring-loaded Core Breast Biopsy Device

Hologic is defining the standard of care in women's health. Our technologies help doctors see better, know sooner, reach further and touch more lives. At Hologic, we turn passion into action, and action into change.

BREAST IMAGING SOLUTIONS | INTERVENTIONAL BREAST SOLUTIONS | BONE HEALTH
PRENATAL HEALTH | GYNECOLOGIC HEALTH | MOLECULAR DIAGNOSTICS

HOLOGIC[®]

The Women's Health Company

United States / Latin America

35 Crosby Drive,
Bedford, MA 01730-1401 USA
Tel: +1.781.999.7300
Sales: +1.781.999.7453
Fax: +1.781.280.0668
www.hologic.com

Europe

Everest (Cross Point)
Leuvensesteenweg 250A
1800 Vilvoorde, Belgium
Tel: +32.2.711.4680
Fax: +32.2.725.2087

Asia Pacific

7th Floor, Biotech Centre 2,
No. 11 Science Park West Avenue,
Hong Kong Science Park,
Shatin, New Territories,
Hong Kong.
Tel: +852.3748.7700
Fax: +852.3526.0723

Australia

Hologic (Australia) Pty Ltd
Suite 402, Level 4
2 Lyon Park Road
Macquarie Park NSW 2113
Australia
Tel: +61.2.9888.8000
Fax: +61.2.9870.7555