


Artwork consists of sixty-six (66) 8 ½ inch x 11 inch pages.

| | | | | |
|---|-----------------|---|---|--------------|
| REV AUTHORED BY P.KUPOVICH | DATE 3/1/10 | HOLOGIC ® Osteoporosis Assessment LORAD® Breast Cancer Detection DirectRay® Digital Imaging A FAMILY OF COMPANIES FLUOROSCAN® C-arm Imaging |  SIGNATURES ON FILE | |
| REV DRAFTED BY SBROWNMACIOCI | DATE 5/10/10 | | | |
| PROPRIETARY: This document contains proprietary data of Hologic, Inc. No disclosure, reproduction or use of any part thereof may be made except by written permission from Hologic. | | TITLE | DOCUMENT NUMBER | REV |
| | | APEX 3.1 DICOM CONFORMANCE | AW-04746 | 002 |
| REV. RELEASE DATE: | 05/10/10 | ARTWORK | SIZE A | SHEET 1 OF 1 |

APEX 3.1
DICOM CONFORMANCE STATEMENT

1. Conformance Statement Overview

This document is the DICOM Conformance Statement for APEX 3.1 software for Hologic QDR Bone Densitometers family. It describes DICOM capabilities of the Apex software and how it conforms to the DICOM 3.0 standard.

Table 1.1 provides an overview of the network services supported by Apex.

**Table 1-1.
NETWORK SERVICES**

| SOP Classes | User of Service (SCU) | Provider of Service (SCP) |
|---|------------------------------|----------------------------------|
| Transfer | | |
| Secondary Capture Image Storage | Option (see Note 1) | See Note 4 |
| Grayscale Softcopy Presentation State Storage | Option (see Note 1) | No |
| Workflow Management | | |
| Storage Commitment Push Model | Option (see Note 1) | No |
| Modality Worklist | Option (see Note 3) | No |
| Modality Performed Procedure Step | Option (see Note 3) | No |
| Query/Retrieve | | |
| Study Root Information Model – FIND | Option (see Note 2) | No |
| Study Root Information Model – MOVE | Option (see Note 2) | No |

Note 1: Secondary Capture Image Storage SCU, Softcopy Grayscale Presentation State Storage, and Storage Commitment services are combined in a separately licensed “DICOM” option.

Note 2: Query/Retrieve service is a separately licensed “Query Retrieve” option.

Note 3: Modality Worklist and Performed Procedure Step services are combined in a separately licensed “Worklist” option.

Note 4: Apex is capable of receiving DICOM files, but it uses only private data and does not store the files.

2. Table of Contents

| | |
|--|-----------|
| 1. CONFORMANCE STATEMENT OVERVIEW | 2 |
| 2. TABLE OF CONTENTS | 3 |
| 3. INTRODUCTION | 4 |
| 3.1. Revision History | 4 |
| 3.2. Audience..... | 5 |
| 3.3. Definitions..... | 5 |
| 3.4. References..... | 5 |
| 4. NETWORKING | 6 |
| 4.1. Implementation Model | 6 |
| 4.1.1. Application Data Flow | 6 |
| 4.1.2. Functional Definitions of AEs | 8 |
| 4.1.3. Sequencing of Real-World Activities | 10 |
| 4.2. AE Specifications | 11 |
| 4.2.1. Apex Application Entity Specification | 11 |
| 4.3. Network Interfaces..... | 44 |
| 4.3.1. Supported Communication Stacks | 44 |
| 4.3.2. TCP/IP Stack..... | 44 |
| 4.3.3. Physical Media Support | 44 |
| 4.4. Configuration | 44 |
| 4.4.1. AE Title / Presentation Address Mapping | 44 |
| 4.4.2. Parameters..... | 46 |
| 5. MEDIA INTERCHANGE | 50 |
| 5.1. Implementation Model | 50 |
| 5.1.1. Application Data Flow | 50 |
| 5.1.2. Functional Definition of AEs..... | 50 |
| 5.1.3. Sequencing of Real-World Activities | 50 |
| 5.1.4. File Meta Information..... | 51 |
| 5.2. AE Specifications | 51 |
| 6. SUPPORT OF CHARACTER SETS..... | 51 |

6.1. Reading Messages 51

 6.1.1. Single Byte Character Sets without Code Extensions 51

 6.1.2. Multi-Byte Character Sets without Code Extensions 51

 6.1.3. Single Byte Character Sets with Code Extensions 52

 6.1.4. Multi-Byte Character Sets with Code Extensions 52

6.2. Creating Messages 52

7. SECURITY 52

8. ANNEXES 52

8.1. IOD Contents..... 52

 8.1.1. Created SOP Instances 52

 8.1.2. Usage of Attributes from Received IODs 63

 8.1.3. Attribute Mapping 63

 8.1.4. Coerced/Modified Fields 65

8.2. Data Dictionary of Private Attributes..... 65

8.3. Coded Terminology and Templates 66

8.4. Grayscale Image Consistency 66

8.5. Standard Extended / Specialized Private SOP Classes 66

8.6. Private Transfer Syntaxes..... 66

3. Introduction

3.1. Revision History

| Document Version | Date of Issue | Author | Description |
|-------------------------|----------------------|---------------|--|
| 1.0 | 02/23/2007 | P. Kupovich | Initial version |
| 1.1 | 09/10/2007 | P. Kupovich | 1. Made the document format DICOM 2007 compliant. 2. Updated for GSPS, Color DICOM images, and IVA Results. |
| 1.2 | 02/14/2008 | P. Kupovich | Updated for using Study Description field (0008,1030) |
| 1.3 | 03/03/2009 | P. Kupovich | Added support of character sets |
| 1.4 | 02/01/2010 | P. Kupovich | Updated for new use of Modality and Study Description fields, MPPS , and auto-generated Accession Number |

3.2. Audience

This document is intended for hospital staff, health system integrators, software designers or implementers. It is assumed that the reader has a working understanding of DICOM.

3.3. Definitions

This section provides the definitions of terms, acronyms, and abbreviations that are used throughout the document.

| | |
|--------|--|
| DICOM | Digital Imaging and Communication in Medicine, a standard on image communications in medical applications |
| HIS | Hospital Information System |
| RIS | Radiology Information System |
| AE | Application Entity |
| SCU | Service Class User |
| SCP | Service Class Provider |
| SOP | Service-Object Pair, a definition of an information object (like an image) and a service (like storage) that can be performed for the object |
| VR | Value Representation, a data encoding method in DICOM |
| UID | Unique Identifier |
| DIMSE | DICOM Message Service Element |
| TCP/IP | Transmission Control Protocol / Internet Protocol, a widely used computer networking protocol |
| MWL | Modality Worklist |
| MPPS | Modality Performed Procedure Step |
| GSPS | Softcopy Grayscale Presentation State |
| IVA | Instant Vertebral Assessment |

3.4. References

1. American College of Radiology - National Electrical Manufacturers Association (ACR-NEMA) Digital Imaging and Communications in Medicine V3.0-2007.

4. Networking

4.1. Implementation Model

4.1.1. Application Data Flow

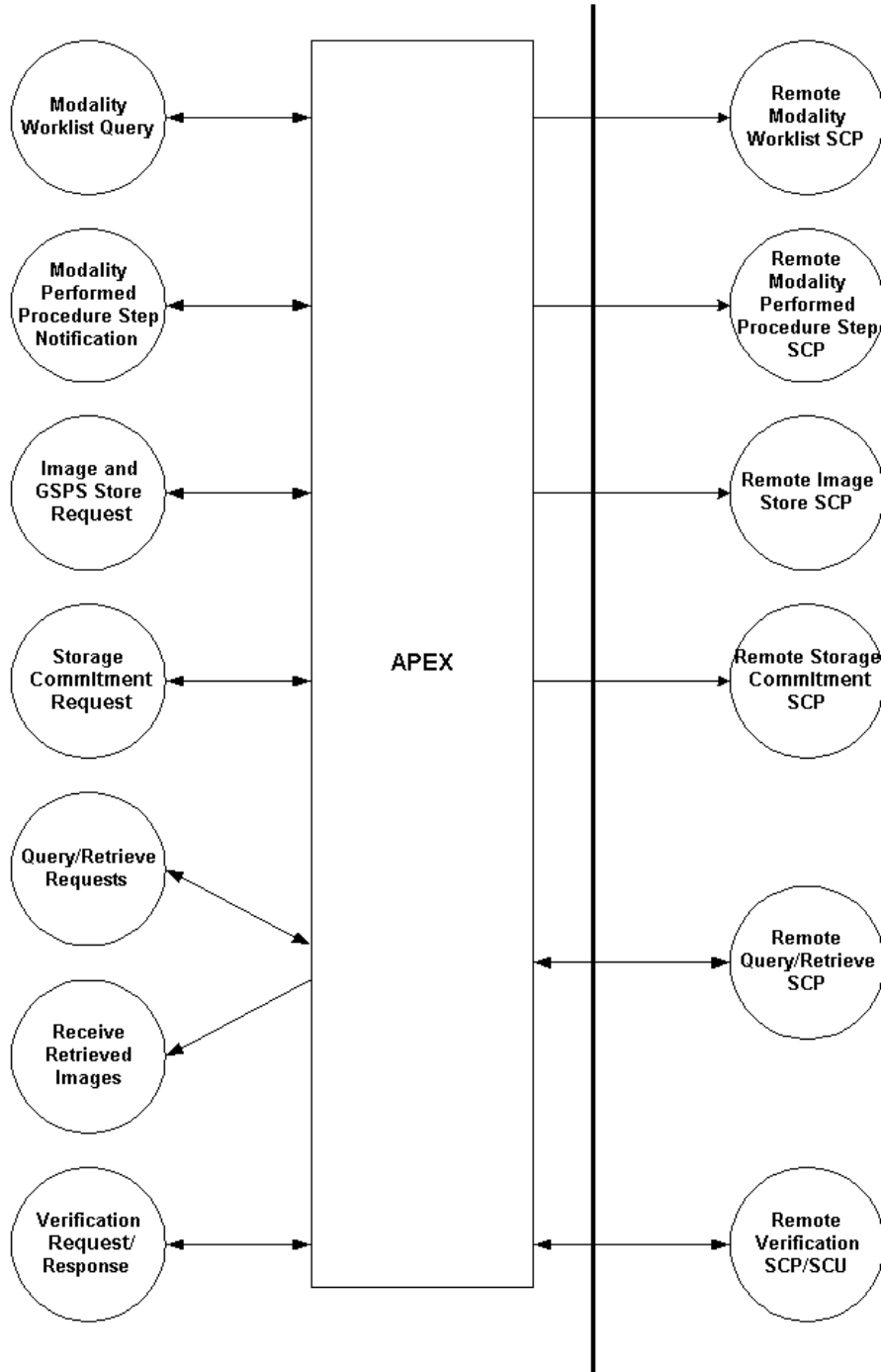


Figure 4.1-1. Application Data Flow Diagram

4.1.1.1. Storage

1. Apex AE generates a DICOM file and stores it locally.
2. Apex AE initiates an association with remote Storage SCP.
3. Apex AE pushes the file to the remote Storage SCP using C-STORE command, and then closes the association.

4.1.1.2. Storage Commitment

1. Apex AE initiates an association with remote Storage Commitment SCP.
2. Apex AE sends a Storage Commitment request to the remote Storage Commitment SCP using N-ACTION command, and then closes the association.
3. The remote Storage Commitment SCP initiates an association with APEX AE and uses N-EVENT-REPORT command to send a notification about Storage Commitment results, and then closes the association.

4.1.1.3. Modality Worklist

1. Apex AE initiates an association with remote Modality Worklist SCP.
2. Apex AE queries the Modality Worklist SCP to obtain Modality Worklist information using C-FIND command, and then closes the association.
3. Apex AE stores obtained Modality Worklist information in the local database.

4.1.1.4. Modality Performed Procedure Step

1. Apex AE initiates an association with remote Modality Performed Procedure Step SCP.
2. Apex AE notifies the MPPS SCP about started procedure using N-CREATE command, and then closes the association.
3. Apex AE initiates an association with remote MPPS SCP.
4. Apex AE notifies the MPPS SCP about completed or canceled procedure using N-SET command, and then closes the association.

4.1.1.5. Query/Retrieve

1. Apex AE initiates an association with remote Query/Retrieve SCP.
2. Apex AE queries the Query/Retrieve SCP to obtain the information about studies using C-FIND command, and then closes the association.
3. Apex AE initiates an association with remote Query/Retrieve SCP.
4. Apex AE sends a retrieve request using C-MOVE command.
5. Apex AE receives incoming C-STORE requests, extracts Apex scan data contained in a private group, and discards the rest of the DICOM message.
6. Apex AE closes the association.

4.1.1.6. Verification SCU

1. Apex AE initiates an association with remote Verification SCP.
2. Apex AE verifies the DICOM connectivity using C-ECHO command.
3. Apex AE closes the association.

4.1.1.7. Verification SCP

1. Remote Verification SCU initiates an association with APEX AE.
2. Remote Verification SCU verifies the DICOM connectivity using C-ECHO command.
3. Remote Verification SCU closes the association.

4.1.2. Functional Definitions of AEs

4.1.2.1. Functional Definition of Apex Application Entity

4.1.2.1.1. Storage SCU

The user initiates sending DICOM files via the user interface. In addition to the image files, Apex AE may automatically generate GSPS files and IVA Results files for IVA scans, based on the configuration settings. Apex AE generates DICOM files, stores them locally, and puts corresponding entries in the queue. Immediately after this, it tries to send the files to specified Storage SCPs. In case of failure, it will retry sending files according to the configured queue settings. The user can monitor status of each queue entry, delete entries from the queue, and access the history via the user interface. Storage SCPs may also be selected as Apex scan archive locations. In this case DICOM files will also include private Apex scan data, for subsequent restoring using the Query/Retrieve service. The SCP network parameters and study DICOM information associated with an Apex scan will be saved in the local database, to be able to locate a scan and perform Retrieve without preceding Query.

4.1.2.1.2. Storage Commitment

If given DICOM Storage destination is configured in Apex to use Storage Commitment, then upon successful completion of Storage request, Apex AE writes a queue entry for the sent DICOM file. Upon next iteration of the queue execution, Apex AE issues Storage Commitment request. In case of failure, it will retry according to the configured queue settings. The user can monitor status of each queue entry and access the history via the user interface.

4.1.2.1.3. Modality Worklist

Worklist query may start automatically according to the configured schedule, or may be initiated by the user. Upon successful query, received results stored in local database and accessible by the user via the user interface.

During receiving the worklist response items are counted and the query processing is stopped if the configurable limit of items is reached. The Worklist results older than configured number of days will be cleared with the next Worklist update.

In case of failure of scheduled automatic query, the Apex AE will retry it according to configured settings. In case of failure of user-initiated query, no retry attempts will be made.

4.1.2.1.4. Modality Performed Procedure Step

The Apex AE performs the creation of a MPPS Instances automatically whenever images are acquired, if all of the following conditions are met:

- MPPS is enabled
- Images are acquired for a study selected from Worklist

After all images for a study are acquired, or the acquisition is aborted, the Apex AE automatically issues corresponding “Complete” or “Discontinued” update.

In case of failure, the Apex AE will retry the entire flow according to the configuration settings.

4.1.2.1.5. Query/Retrieve

4.1.2.1.5.1. Query

The user can initiate the query. Query is performed on Study level. Upon receipt of a successful response from the SCP, the Apex AE displays the received results.

4.1.2.1.5.2. Retrieve

The user initiates the retrieve operation. For retrieve parameters, the Apex application may either use the study information obtained from the query, or use the information previously saved in the local database at the time when images were sent to a remote SCP. In first case, the Retrieve operation is performed on Study level, and in second case on Series level. The Apex AE Title is specified as Move Destination.

4.1.2.1.5.3. Receive Data

Upon startup, Apex application listens for incoming association requests. Upon receiving and accepting a C-STORE request, the application parses received DICOM message. If the message contains private Apex scan data, the application extracts it and restores Apex scan into the system. The rest of the DICOM message content is discarded.

4.1.2.1.6. Verification SCU

The user may send a verification request to any SCP the Apex AE is configured to use.

4.1.2.1.7. Verification SCP

The Apex application listens for incoming verification requests. Upon receiving a request, it sends back a response.

4.1.3. Sequencing of Real-World Activities

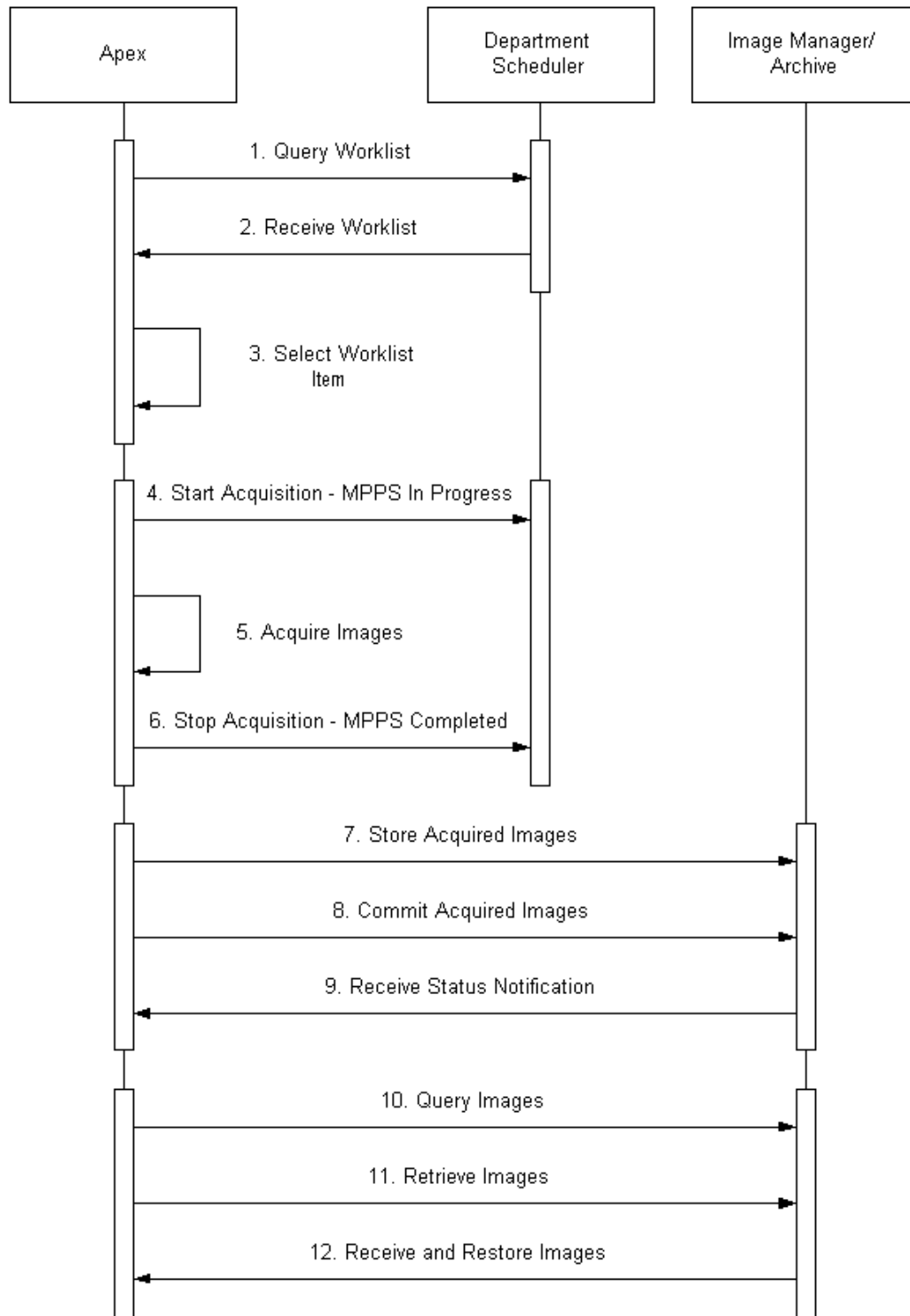


Figure 4.1-2. Sequencing of real-world activities

APEX DICOM Conformance Statement

Following steps may be performed under normal scheduled workflow conditions:

1. Query Modality Worklist
2. Receive Modality Worklist
3. Select a procedure from Worklist
4. Start image acquisition. Send MPPS In Progress – only if:
 - a. Procedure is obtained from Worklist, and not entered manually
 - b. Apex field “Study name” (mapped to a certain Worklist attribute) contains study name that is also configured as one of the available exam types in Apex.
5. Acquire images
6. Stop image acquisition. If MPPS In Progress was sent, then send MPPS Completed or Discontinued:
 - a. Send MPPS Completed if all scans configured for that Apex exam type are performed
 - b. Send MPPS Discontinued if not all scans configured for that Apex exam type are performed
7. Store acquired images
8. Commit acquired images, if configured so
9. Receive notification report about commitment status
10. Query images
11. Retrieve images
12. Receive images. Restore images if they contain Apex scan data.

4.2. AE Specifications

4.2.1. Apex Application Entity Specification

4.2.1.1. SOP Classes

Apex application provides Standard Conformance to the following DICOM V3.0 SOP Classes:

**Table 4.2-1.
SOP Classes**

| SOP Class Name | SOP Class UID | SCU | SCP |
|---|------------------------------|-----|-----|
| Modality Worklist Information Model - FIND | 1.2.840.10008.5.1.4.31 | Yes | No |
| Modality Performed Procedure Step | 1.2.840.10008.3.1.2.3.3 | Yes | No |
| Secondary Capture Image Storage | 1.2.840.10008.5.1.4.1.1.7 | Yes | No |
| Grayscale Softcopy Presentation State Storage | 1.2.840.10008.5.1.4.1.1.11.1 | Yes | No |
| Storage Commitment Push Model | 1.2.840.10008.1.20.1 | Yes | No |
| Study Root Query/Retrieve Model – FIND | 1.2.840.10008.5.1.4.1.2.2.1 | Yes | No |
| Study Root Query/Retrieve Model - MOVE | 1.2.840.10008.5.1.4.1.2.2.2 | Yes | No |
| Verification | 1.2.840.10008.1.1 | Yes | Yes |

4.2.1.2. Association Policies

4.2.1.2.1. General

The DICOM standard application context name for DICOM 3.0 is always proposed:

**Table 4.2-2.
DICOM Application Context**

| | |
|--------------------------|-----------------------|
| Application Context Name | 1.2.840.10008.3.1.1.1 |
|--------------------------|-----------------------|

4.2.1.2.2. Number Of Associations

Maximum number of simultaneous associations initiated for each activity:

**Table 4.2-3.
Number of Initiated Associations**

| | |
|------------------------|---|
| Storage SCU | 1 |
| Storage Commitment SCU | 1 |
| Query Retrieve SCU | 1 |
| Worklist SCU | 1 |
| MPPS SCU | 1 |
| Verification SCU | 1 |

Maximum number of accepted simultaneous associations:

**Table 4.2-3.
Number of Accepted Associations**

| | |
|------------------------|-------------------|
| Number of associations | 20 (configurable) |
|------------------------|-------------------|

4.2.1.2.3. Asynchronous Nature

The Apex AE does not support asynchronous communications.

**Table 4.2-4.
Asynchronous Nature**

| | |
|---|---|
| Maximum number of outstanding asynchronous transactions | 1 |
|---|---|

4.2.1.2.4. Implementation Identifying Information

The Implementation Identifying Information for the Apex AE is:

**Table 4.2-5.
Implementation Identifying Information**

| | |
|-----------------------------|----------------|
| Implementation Class UID | 1.2.840.113850 |
| Implementation Version Name | Apex3.0 |

4.2.1.3. Association Initiation Policy

4.2.1.3.1. Activity – Send Images

4.2.1.3.1.1. Description and Sequencing of Activities

A user can select scans and request them to be sent to multiple destinations. Based on the configuration settings, additional IVA Results file and GSPS file may be automatically generated for IVA scans. Each request is forwarded to the send queue and processed individually. If GSPS file is generated along with image file, both files are treated as one queue entry. If IVA Results file is generated, it is treated as a separate queue entry. If the same scan is requested to be sent to multiple destinations, there is a separate queue entry for each destination. Each request is processed immediately after forwarding to the send queue. Requests are processed in the same order as they were initially entered. For image/GSPS files pair, a GSPS file is attempted to be sent only after the image file was successfully sent.

The Apex AE initiates an association with Storage SCP AE specified in the first queue entry, and sends files using C-STORE Request. For the subsequent queue entries, the Apex AE issues C-STORE Requests over the same association as long as each following queue entry specifies the same Storage SCP AE. If an entry specifies a different AE, Apex closes the current association and opens a new one with specified new Storage SCP.

If an association cannot be established with the Storage SCP, or if the C-STORE Response from the Storage SCP contains a status other than Success or Warning, the related send queue entry is marked as pending. The Apex AE will retry sending files for pending queue entries according to the configured settings. For image/GSPS file pair, if an image file was successfully sent, and sending the GSPS file failed, the Apex AE will retry to send only the GSPS file.

After exercising maximum number of attempts to send files for a queue entry, the entry is marked as failed, and no further attempts will be performed.

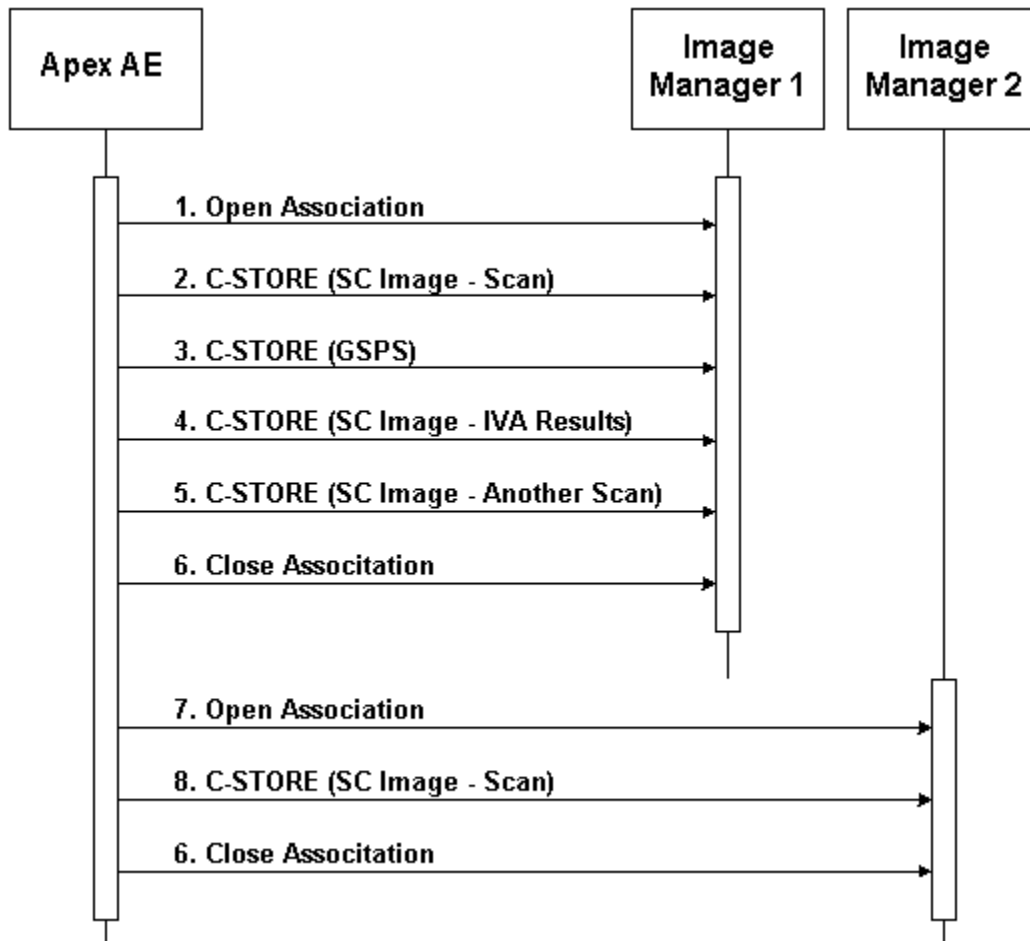


Figure 4.2-1. Sequencing of Activity – Send Images

A possible sequence of interactions between the Apex AE and an Image Manager (e.g. a storage or archive device supporting the Storage SOP Classes as an SCP) is illustrated in Figure 4.2-1:

1. The Apex AE opens an association with the Image Manager.
2. An SC image for acquired scan is transmitted to the Image Manager using a C-STORE request and the Image Manager replies with a C-STORE response (status success).
3. A GSPS instance is transmitted to the Image Manager using a C-STORE request and the Image Manager replies with a C-STORE response (status success).
4. An SC image for IVA Results is transmitted to the Image Manager using a C-STORE request and the Image Manager replies with a C-STORE response (status success).
5. An SC image for another acquired scan is transmitted to the Image Manager using a C-STORE request and the Image Manager replies with a C-STORE response (status success).
6. The Apex AE closes the association with the Image Manager.
7. The Apex AE opens an association with another Image Manager.

APEX DICOM Conformance Statement

8. An SC image for acquired scan is transmitted to the Image Manager using a C-STORE request and the Image Manager replies with a C-STORE response (status success).
9. The Apex AE closes the association with the Image Manager.

NOTE: Many other message sequences are possible depending on the number of scans to be stored, scan types, number of destinations, and configuration settings.

4.2.1.3.1.2. Proposed Presentation Contexts

**Table 4.2-6.
Proposed Presentation Contexts for Activity – Send Images**

| Abstract Syntax | | Transfer Syntax | | Role | Extended Negotiation |
|---|------------------------------|---------------------------|---------------------|------|----------------------|
| Name | UID | Name List | UID List | | |
| Secondary Capture Image Storage | 1.2.840.10008.5.1.4.1.1.7 | Implicit VR Little Endian | 1.2.840.10008.1.2 | SCU | None |
| | | Explicit VR Little Endian | 1.2.840.10008.1.2.1 | | |
| | | Explicit VR Big Endian | 1.2.840.10008.1.2.2 | | |
| Grayscale Softcopy Presentation State Storage | 1.2.840.10008.5.1.4.1.1.11.1 | Implicit VR Little Endian | 1.2.840.10008.1.2 | SCU | None |
| | | Explicit VR Little Endian | 1.2.840.10008.1.2.1 | | |
| | | Explicit VR Big Endian | 1.2.840.10008.1.2.2 | | |

4.2.1.3.1.3. SOP Specific Conformance

The behavior of Apex AE when encountering status codes in a C-STORE response is summarized in the table below:

**Table 4.2-7.
C-STORE Response Status Handling Behavior**

| Service Status | Further Meaning | Error Code | Behavior |
|------------------------|-----------------------------------|-------------------|---|
| Success | Success | 0000 | Job is marked as successful |
| Warning | Coercion of data elements | B000 | Job is marked as successful |
| Warning | Data set does not match SOP class | B007 | Job is marked as successful |
| Warning | Elements discarded | B006 | Job is marked as successful |
| Any other status codes | | | Job is marked as pending. Status code and contents of the Error Comment attribute (0000,0902) (if present) is logged and accessible via the UI. Further retry attempts will be made until maximum retry number is reached, after which the job is marked as failed. |

The behavior of Apex AE during communication failure is summarized in the table below:

**Table 4.2-8.
Communication Failure Behavior**

| Exception | Behavior |
|--|---|
| Association can not be established | Job is marked as pending. Failure reason is logged. Further retry attempts will be made until maximum retry number is reached, after which the job is marked as failed. |
| Timeout | |
| Association aborted by the SCP or network layers | |

4.2.1.3.2. Activity – Send Storage Commitment Request

4.2.1.3.2.1. Description and Sequencing of Activities

After a scan image (and a GSPS instance and an IVA Results image for IVA scans - if configured) are successfully sent to a destination, and the Apex AE is configured to treat this destination as Storage Commitment SCP, the Apex AE creates corresponding entries in the Storage Commitment queue. A separate queue entry is created for each sent DICOM file. (I.e. if files sent for a scan are image, GSPS, and IVA Results, then 3 independent queue entries will be created).

The Storage Commitment queue processing starts recurrently according to the configured time interval. All new entries (created between two queue runs) and existing pending entries are processed at that time. Queue entries are processed in the same order as they where initially entered.

The Apex AE issues Storage Commitment Requests using N-ACTION command. Each request is issued in a separate association. The Apex AE does not process N-EVENT-

REPORT messages within the same association as N-ACTION Requests. N-EVENT-REPORT messages are processed in separate associations initiated by the SCP.

If an association cannot be established with the Storage Commitment SCP, the related queue entry is marked as pending. The Apex AE will retry sending Storage Commitment Requests for pending queue entries according to the configured settings. After exercising maximum number of retry attempt, the entry is marked as failed, and no further attempts will be performed.

Upon receiving the N-ACTION Response containing status Success, the entry is marked to wait for corresponding N-EVENT-REPORT results. If N-ACTION Response containing status other than Success, the entry is marked as failed and no further retry attempts will be performed.

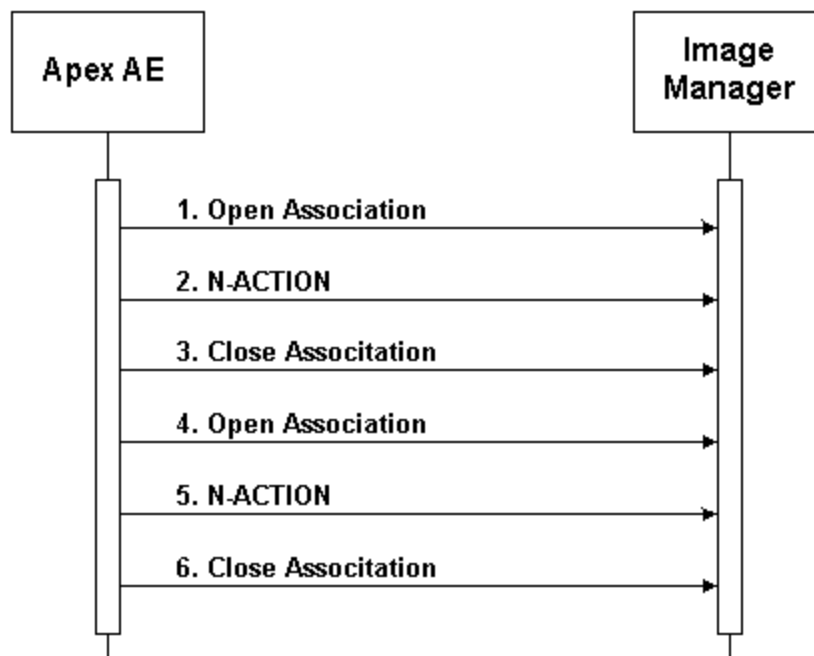


Figure 4.2-2. Sequencing of Activity – Storage Commitment

A possible sequence of interactions between the Apex AE and an Image Manager (e.g. a storage or archive device supporting the Storage Commitment SOP Classes as an SCP) is illustrated in Figure 4.2-1:

1. The Apex AE opens an association with the Image Manager.
2. An N-ACTION request is transmitted to the Image Manager to obtain storage commitment of previously transmitted SC images and GSPS instances. The Image Manager replies with a N-ACTION response indicating the request has been received and is being processed.
3. The Apex AE closes the association with the Image Manager.
4. The Apex AE opens another association with the Image Manager.
5. An N-ACTION request is transmitted to the Image Manager to obtain storage commitment of previously transmitted SC images and GSPS instances. The Image

Manager replies with a N-ACTION response indicating the request has been received and is being processed.

6. The Apex AE closes the association with the Image Manager.

NOTE: Many other message sequences are possible depending on the number of SC images and GSPS instances to commit and configuration settings.

4.2.1.3.2.2. Proposed Presentation Contexts

Table 4.2-9.

Proposed Presentation Contexts for Activity – Send Storage Commitment Request

| Abstract Syntax | | Transfer Syntax | | Role | Extended Negotiation |
|-------------------------------|----------------------|---------------------------|---------------------|------|----------------------|
| Name | UID | Name List | UID List | | |
| Storage Commitment Push Model | 1.2.840.10008.1.20.1 | Implicit VR Little Endian | 1.2.840.10008.1.2 | SCU | None |
| | | Explicit VR Little Endian | 1.2.840.10008.1.2.1 | | |
| | | Explicit VR Big Endian | 1.2.840.10008.1.2.2 | | |

4.2.1.3.2.3. SOP Specific Conformance

The behavior of Apex AE when encountering status codes in a C-STORE response is summarized in the table below:

Table 4.2-10.

C-STORE Response Status Handling Behavior

| Service Status | Further Meaning | Error Code | Behavior |
|------------------------|-----------------|------------|---|
| Success | Success | 0000 | Start waiting for incoming N-EVENT-REPORT message |
| Any other status codes | | | Job is marked as failed. Status code and contents of the Error Comment attribute (0000,0902) (if present) is logged and accessible via the UI. No further retry attempts will be performed. |

The behavior of Apex AE during communication failure is summarized in the table below:

**Table 4.2-11.
Communication Failure Behavior**

| Exception | Behavior |
|--|---|
| Association can not be established | Job is marked as pending. Failure reason is logged. Further retry attempts will be made until maximum retry number is reached, after which the job is marked as failed. |
| Timeout | |
| Association aborted by the SCP or network layers | |

The Apex AE may issue N-ACTION Requests using Image-By-Image or Batch mode, according to the configuration settings. In Image-By-Image mode, a separate N-ACTION Request is issued for each SC image or GSPS instance. In Batch mode, an N-ACTION request is issued for a group of SC images and GSPS instances. If Batch mode is selected, then all images and GSPS instances sent for a group of scans selected by the user during a single DICOM Send operation, have the same Transaction UID (0008,1195) and are included into one N-ACTION Request.

4.2.1.3.3. Activity – Worklist Update

4.2.1.3.3.1. Description and Sequencing of Activities

The request for a Worklist Update is initiated by user interaction, i.e. pressing the buttons “Query” or ”Detailed Query”, or automatically according to the schedule, configurable by the user. With “Query” the automated query mechanism is performed immediately on request, while with “Detailed Query” a dialog to enter search criteria is opened and an interactive query can be performed.

The interactive Worklist Query will display a dialog for entering data as search criteria: Accession Number, Requested Procedure ID, Patient ID, and Patient Name. When the query is started on user request, only the data from the dialog will be inserted as matching keys into the query.

With automated worklist queries (including initiated by pressing the “Query” button) the Apex AE always requests all items for a procedure date range, Modality, and Scheduled Station AE Title. Each of these parameters is configurable by the user.

Upon initiation of the request, the Apex AE will build an identifier for the C-FIND request, will initiate an association to send the request and will wait for Worklist responses. After retrieval of each response, the Apex AE will access the local database to add or update patient demographic and procedure data. To protect the system from overflow, the Apex AE will limit the number of processed worklist responses to a configurable maximum. During receiving the worklist response items are counted and the query processing is stopped, by closing the association if the configurable limit of items is reached.

The Worklist results older than configured number of days will be cleared with the next Worklist update.

The Apex AE will initiate an association in order to issue a C-FIND request according to the Modality Worklist Information Model.

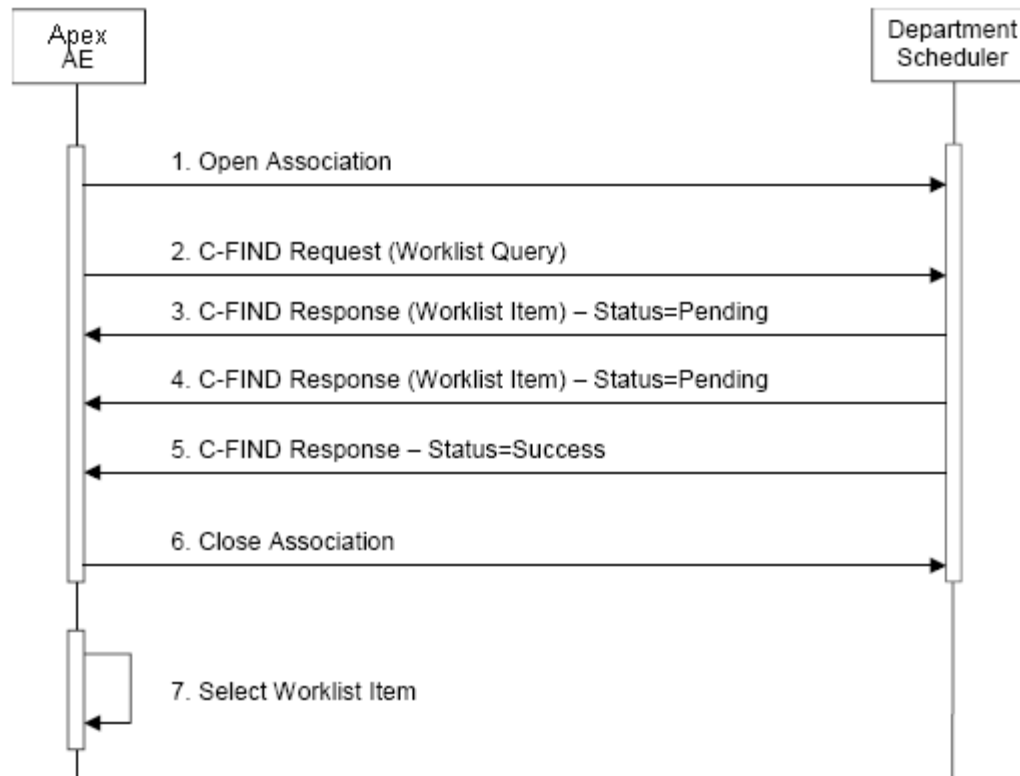


Figure 4.2-3. Sequencing of Activity – Worklist Update

A possible sequence of interactions between the Apex AE and a Departmental Scheduler (e.g. a device such as a RIS or HIS which supports the Modality Worklist SOP Class as an SCP) is illustrated in the Figure above:

1. The Apex AE opens an association with the Departmental Scheduler.
2. The Apex AE sends a C-FIND request to the Departmental Scheduler containing the Worklist Query attributes.
3. The Departmental Scheduler returns a C-FIND response containing the requested attributes of the first matching Worklist Item.
4. The Departmental Scheduler returns another C-FIND response containing the requested attributes of the second matching Worklist Item.
5. The Departmental Scheduler returns another C-FIND response with status Success indicating that no further matching Worklist Items exist. This example assumes that only 2 Worklist items match the Worklist Query.
6. The Apex AE closes the association with the Departmental Scheduler.
7. The user selects a Worklist Item from the Worklist and prepares to acquire new images.

4.2.1.3.3.2. Proposed Presentation Contexts

**Table 4.2-12.
Proposed Presentation Contexts for Activity – Worklist Update**

| Abstract Syntax | | Transfer Syntax | | Role | Extended Negotiation |
|------------------------|------------------------|---------------------------|---------------------|------|----------------------|
| Name | UID | Name List | UID List | | |
| Modality Worklist Find | 1.2.840.10008.5.1.4.31 | Implicit VR Little Endian | 1.2.840.10008.1.2 | SCU | None |
| | | Explicit VR Little Endian | 1.2.840.10008.1.2.1 | | |
| | | Explicit VR Big Endian | 1.2.840.10008.1.2.2 | | |

4.2.1.3.3.3. SOP Specific Conformance

The following table describes the Apex AE behavior depending on Status Codes of messages received from the Worklist SCP.

**Table 4.2-13.
C-FIND Response Status Handling Behavior**

| Status | Status Code | Meaning | Apex Behavior |
|-----------------------------------|-------------|---|--|
| Success | 0000 | Matching is complete – No final Identifier is supplied | Completes retrieving of matches |
| Pending | FF00 | Matches are continuing – Current Match is supplied and any Optional Keys were supported in the same manner as Required Keys | Receiving of matches continues |
| Pending (No Optional Key Support) | FF01 | Matches are continuing – Warning that one or more Optional Keys were not supported for existence for this Identifier | Receiving of matches continues without any warnings or errors |
| Other | Other | All other Status Codes | Terminates receiving of matches. Status code and contents of the Error Comment attribute (0000,0902) (if present) is logged. If the query was initiated by the user, a failure message will be displayed. |

APEX DICOM Conformance Statement

| | | | |
|--|--|--|---|
| | | | Matches received prior to this code are handled normally. |
|--|--|--|---|

The behavior of Apex AE during communication failure is summarized in the table below:

**Table 4.2-14.
Communication Failure Behavior**

| Exception | Behavior |
|--|--|
| Association can not be established | Failure reason is logged. If query was initiated by the user, a failure message is displayed and no further retries will be made. If automatic query, no message displayed, and further retries will be made according to the configuration settings. |
| Timeout Association aborted by the SCP or network layers | Failure reason is logged. If query was initiated by the user, a failure message is displayed and no further retries will be made. If automatic query, no message displayed, and further retries will be made according to the configuration settings. Matches received prior to the failure are handled normally. |
| Receiving an invalid response or could not read the response | Error is logged, processing of bad response message is skipped, and the Apex proceeds to the next message. |

Acquired images will always use the Study Instance UID specified for the Scheduled Procedure Step (if available). If an acquisition is unscheduled, a Study Instance UID will be generated locally.

The Table below provides a description of the Apex AE Worklist Request Identifier and specifies the attributes that are copied into the images. Unexpected attributes returned in a C-FIND response are ignored. Requested return attributes not supported by the SCP are set to have no value.

**Table 4.2-15.
Worklist Request Identifier**

| Attribute Name | Tag | VR | M | Q | D | IOD |
|------------------------------------|-------------|----|---|---|---|-----|
| Scheduled Procedure Step Module | | | | | | |
| Scheduled Procedure Step Sequence | (0040,0100) | SQ | | | | |
| >Scheduled Station AE Title | (0040,0001) | AE | S | | x | |
| >Scheduled Station Name | (0040,0010) | SH | | | | |
| >Scheduled Procedure Step Location | (0040,0011) | SH | | | x | |

APEX DICOM Conformance Statement

| | | | | | | |
|---|-------------|----|---|---|---|---|
| >Scheduled Procedure Step Start Date | (0040,0002) | DA | R | | x | |
| >Scheduled Procedure Step Start Time | (0040,0003) | TM | | | | |
| >Scheduled Procedure Step End Date | (0040,0004) | DA | | | | |
| >Scheduled Procedure Step End Time | (0040,0005) | TM | | | | |
| >Scheduled Performing Physician's Name | (0040,0006) | PN | | | x | |
| >Scheduled Procedure Step Description | (0040,0007) | LO | | | x | x |
| >Scheduled Protocol Code Sequence | (0040,0008) | SQ | | | x | |
| >Scheduled Procedure Step ID | (0040,0009) | SH | | | | x |
| >Scheduled Procedure Step Status | (0040,0020) | CS | | | | |
| >Comments on the Scheduled Procedure Step | (0040,0400) | LT | | | | |
| >Modality | (0008,0060) | CS | S | | | x |
| >Requested Contrast Agent | (0032,1070) | LO | | | | |
| >Pre-Medication | (0040,0012) | LO | | | | |
| Requested Procedure Module | | | | | | |
| Requested Procedure ID | (0040,1001) | SH | * | x | | x |
| Reason for the Requested Procedure | (0040,1002) | LO | | | | |
| Requested Procedure Comments | (0040,1400) | LT | | | x | |
| Requested Procedure Code Sequence | (0032,1064) | SQ | | | x | |
| Study Instance UID | (0020,000D) | UI | | | | x |
| Referenced Study Sequence | (0008,1110) | SQ | | | | |
| Requested Procedure Description | (0032,1060) | LO | | | x | |
| Requested Procedure Priority | (0040,1003) | SH | | | | |
| Patient Transport Arrangements | (0040,1004) | LO | | | | |
| Requested Procedure Location | (0040,1005) | LO | | | | |
| Confidentiality Code | (0040,1008) | LO | | | | |
| Reporting Priority | (0040,1009) | SH | | | | |
| Names of Intended Recipients of Results | (0040,1010) | PN | | | x | |
| Imaging Service Request Module | | | | | | |
| Imaging Service Request Comments | (0040,2400) | LT | | | x | |
| Requesting Physician | (0032,1032) | PN | | | x | |
| Referring Physician's Name | (0008,0090) | PN | | | | |
| Requesting Service | (0032,1033) | LO | | | x | |
| Accession Number | (0008,0050) | SH | * | x | x | x |
| Issue Date of Imaging Service Request | (0040,2004) | DA | | | | |
| Issue Time of Imaging Service Request | (0040,2005) | TM | | | | |
| Placer Order Number | (0040,2016) | LO | | | | |
| Filler Order Number | (0040,2017) | LO | | | | |
| Order entered by ... | (0040,2008) | PN | | | | |
| Order Enterer's Location | (0040,2009) | SH | | | | |
| Order Callback Phone Number | (0040,2010) | SH | | | | |
| Reason for the Imaging Service Request | (0040,2001) | LO | | | | |
| Visit Identification Module | | | | | | |
| Institution Name | (0008,0080) | LO | | | | |
| Institution Address | (0008,0081) | ST | | | | |

APEX DICOM Conformance Statement

| | | | | | | |
|--|-------------|----|---|---|---|---|
| Institution Code Sequence | (0008,0082) | SQ | | | | |
| Admission ID | (0038,0010) | LO | | | | |
| Issuer of Admission ID | (0038,0011) | LO | | | | |
| Visit Status Module | | | | | | |
| Visit Status ID | (0038,0008) | CS | | | | |
| Current Patient Location | (0038,0300) | LO | | | x | |
| Patient's Institution Residence | (0038,0400) | LO | | | | |
| Visit Comments | (0038,4000) | LT | | | | |
| Visit Admission Module | | | | | | |
| Referring Physician's Name | (0008,0090) | PN | | | | |
| Referring Physician's Address | (0008,0092) | ST | | | | |
| Referring Physician's Telephone Numbers | (0008,0094) | SH | | | | |
| Admitting Diagnoses Description | (0008,1080) | LO | | | | |
| Admitting Diagnoses Code Sequence | (0008,1084) | SQ | | | | |
| Route of Admissions | (0038,0016) | LO | | | | |
| Admitting Date | (0038,0020) | DA | | | | |
| Admitting Time | (0038,0021) | TM | | | | |
| Visit Relationship Module | | | | | | |
| Referenced Patient Sequence | (0008,1120) | SQ | | | | |
| Patient Identification Module | | | | | | |
| Patient's Name | (0010,0010) | PN | * | x | | |
| Patient ID | (0010,0020) | LO | * | x | | |
| Issuer of Patient ID | (0010,0021) | LO | | | | |
| Other Patient IDs | (0010,1000) | LO | | x | | x |
| Other Patient Names | (0010,1001) | PN | | | | |
| Patient's Birth Name | (0010,1005) | PN | | | | |
| Patient's Mother's Birth Name | (0010,1060) | PN | | | | |
| Medical Record Locator | (0010,1090) | LO | | | | |
| Patient Demographic Module | | | | | | |
| Patient's Age | (0010,1010) | AS | | | | |
| Occupation | (0010,2180) | SH | | | | |
| Confidentiality Constraint on Patient Data Description | (0040,3001) | LO | | | | |
| Patient's Birth Date | (0010,0030) | DA | | | x | |
| Patient's Birth Time | (0010,0032) | TM | | | | |
| Patient's Sex | (0010,0040) | CS | | | x | |
| Patient's Insurance Plan Code Sequence | (0010,0050) | SQ | | | | |
| Patient's Size | (0010,1020) | DS | | | | |
| Patient's Weight | (0010,1030) | DS | | | | |
| Patient's Address | (0010,1040) | LO | | | | |
| Military Rank | (0010,1080) | LO | | | | |
| Branch of Service | (0010,1081) | LO | | | | |
| Country of Residence | (0010,2150) | LO | | | | |
| Region of Residence | (0010,2152) | LO | | | | |
| Patient's Telephone Numbers | (0010,2154) | SH | | | | |

APEX DICOM Conformance Statement

| | | | | | | |
|-----------------------------------|-------------|----|--|--|---|--|
| Ethnic Group | (0010,2160) | SH | | | x | |
| Patient's Religious Preference | (0010,21F0) | LO | | | | |
| Patient Comments | (0010,4000) | LT | | | x | |
| Patient Medical Module | | | | | | |
| Medical Alerts | (0010,2000) | LO | | | x | |
| Contrast Allergies | (0010,2110) | LO | | | | |
| Smoking Status | (0010,21A0) | CS | | | | |
| Additional Patient History | (0010,21B0) | LT | | | x | |
| Pregnancy Status | (0010,21C0) | US | | | x | |
| Last Menstrual Date | (0010,21D0) | DA | | | | |
| Special Needs | (0038,0050) | LO | | | | |
| Patient State | (0038,0500) | LO | | | | |
| Patient Relationship Module | | | | | | |
| Referenced Visit Sequence | (0008,1125) | SQ | | | | |
| Referenced Patient Alias Sequence | (0038,0004) | SQ | | | | |

The above table should be read as follows:

- **Attribute Name:** Attributes supported to build an Apex Modality Worklist Request Identifier.
- **Tag:** DICOM tag for this attribute.
- **VR:** DICOM VR for this attribute.
- **M:** Matching keys for Worklist Update. A "S" will indicate that Apex will supply an attribute value for Single Value Matching, a "R" will indicate Range Matching and a "*" will denote wildcard matching..
- **Q:** Interactive Query Key. An "x" will indicate that Apex will supply this attribute as matching key, if entered in the Detailed Worklist Query dialog.
- **D:** Displayed keys. An "x" indicates that this worklist attribute is displayed to the user. (Also see note 1 below.)
- **IOD:** An "x" indicates that this Worklist attribute is included into all Object Instances created during performance of the related Procedure Step. (Also see note 2 below.)

Note 1. There are fields displayed by Apex, that can be mapped to any of the Worklist Return Keys:

- Patient Name
- Patient ID
- Patient ID2
- Ethnicity
- Patient Date of Birth
- Sex
- Patient Weight
- Patient Height
- Referring Physician
- Procedure Code
- Study Name
- Start Date

- 3 HL7 fields

The Patient ID field serves for Apex as a primary key to identify a patient, so it should be mapped to an attribute containing unique value for each patient, typically Patient ID attribute (0010,0020).

Note 2. There are fields included by Apex into Object Instances that can be mapped to any of the Worklist Return Keys:

- Patient Name
- Patient ID
- Ethnicity
- Patient Date of Birth
- Patient Sex
- Referring Physician

Note 3. All attributes other than Matching Keys serve as Return Keys. In addition, all Matching Keys without assigned values also serve as Return Keys.

Note 4. There is a field used by Apex as a primary key to identify a procedure. It is configurable to use Accession Number (0008,0050) or Study Instance UID (0008,1110) attribute.

4.2.1.3.4. Activity – Acquire Images

4.2.1.3.4.1. Description and Sequencing of Activities

An MPPS SOP Instance is created when the user starts acquiring images for a study selected from Worklist. (See section 4.1.2.1.4 for description of the conditions). The Apex AE initiates an association with MPPS SCP, issues N-CREATE Request with status “IN PROGRESS”, and closes the association.

An MPPS SOP Instance is updated when the user acquires all images for a study (“COMPLETED”) or aborts the study (“DISCONTINUED”). The Apex AE initiates an association with MPPS SCP, issues N-SET Request with status “IN PROGRESS”, and closes the association.

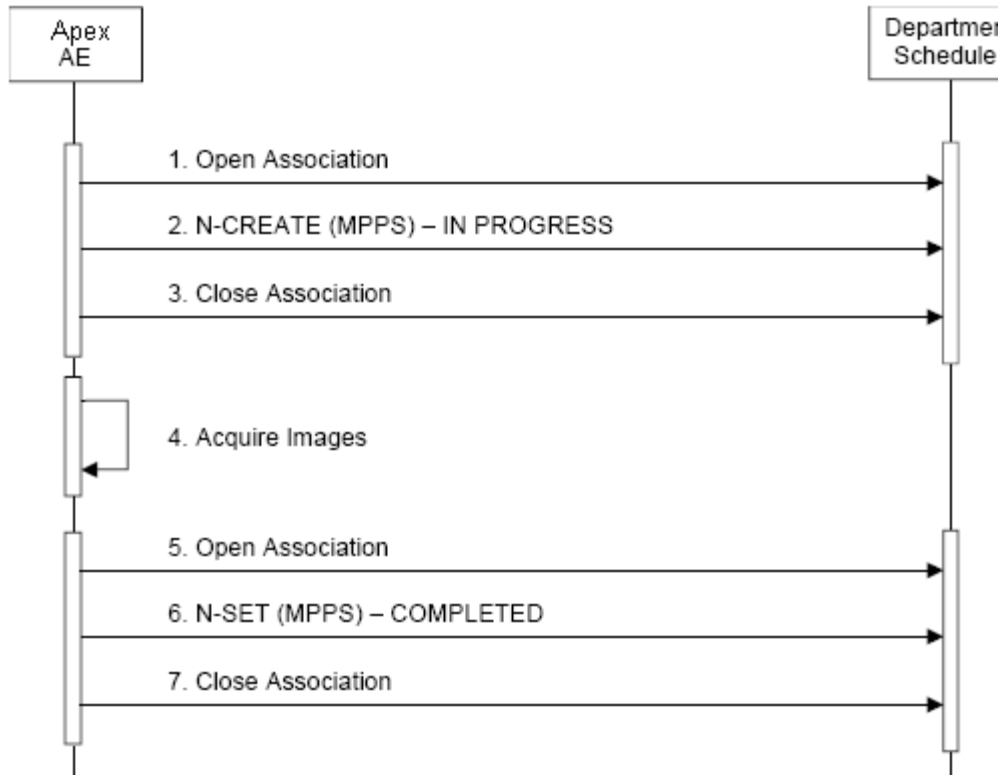


Figure 4.2-4. Sequencing of Activity – Acquire Images

A possible sequence of interactions between the Apex AE and a Departmental Scheduler (e.g. a device such as a RIS or HIS which supports the MPPS SOP Class as an SCP) is illustrated in Figure 4.2-4:

1. The Apex AE opens an association with the Departmental Scheduler.
2. The Apex AE sends an N-CREATE request to the Departmental Scheduler to create an MPPS instance with status of “IN PROGRESS” and create all necessary attributes. The Departmental Scheduler acknowledges the MPPS creation with an N-CREATE response (status success).
3. The Apex AE closes the association with the Departmental Scheduler.
4. All images are acquired and stored in the local database.
5. The Apex AE opens an association with the Departmental Scheduler.
6. The Apex AE sends an N-SET request to the Departmental Scheduler to update the MPPS instance with status of “COMPLETED” and set all necessary attributes. The Departmental Scheduler acknowledges the MPPS update with an N-SET response (status success).
7. The Apex AE closes the association with the Departmental Scheduler.

4.2.1.3.4.2. Proposed Presentation Contexts

**Table 4.2-16.
Proposed Presentation Contexts for Activity – Acquire Images**

| Abstract Syntax | Transfer Syntax | Role | Extended |
|-----------------|-----------------|------|----------|
|-----------------|-----------------|------|----------|

APEX DICOM Conformance Statement

| Name | UID | Name List | UID List | | Negotiation |
|-----------------------------------|-------------------------|---------------------------|---------------------|-----|-------------|
| Modality Performed Procedure Step | 1.2.840.10008.3.1.2.3.3 | Implicit VR Little Endian | 1.2.840.10008.1.2 | SCU | None |
| | | Explicit VR Little Endian | 1.2.840.10008.1.2.1 | | |
| | | Explicit VR Big Endian | 1.2.840.10008.1.2.2 | | |

4.2.1.3.4.3. SOP Specific Conformance

The following table describes the Apex AE behavior depending on Status Codes of messages received from the MPPS SCP.

**Table 4.2-17.
N-CREATE / N-SET Response Status Handling Behavior**

| Service Command | Status | Error Code | Behavior |
|-----------------|------------------------|------------|--|
| N-CREATE | Success | 0000 | No action. Ready to send N-SET |
| | Any other status codes | | Job is marked as failed. Status code and contents of the Error Comment attribute (0000,0902) (if present) is logged. No subsequent N-SET command will be issued. No message displayed to the user. |
| N-SET | Success | 0000 | No action |
| | Any other status codes | | Job is marked as failed. Status code and contents of the Error Comment attribute (0000,0902) (if present) is logged. No message displayed to the user. |

APEX DICOM Conformance Statement

The behavior of Apex AE during communication failure is summarized in the table below:

**Table 4.2-18.
Communication Failure Behavior**

| Exception | Behavior |
|--|--|
| Association can not be established | Job is marked as failed. Failure reason is logged. No message displayed to the user. |
| Timeout | |
| Association aborted by the SCP or network layers | |

Table below provides a description of the MPPS N-CREATE and N-SET request identifiers sent by Apex modality. Empty cells in the N-CREATE and N-SET columns indicate that the attribute is not sent. A “Zero Length” attribute will be sent with zero length. A “WL” indicates that a value will be populated from a corresponding attribute of Modality Worklist.

**Table 4.2-19.
N-CREATE / N-SET Request Identifier**

| Attribute Name | Tag | VR | N-CREATE | N-SET |
|--|-------------|----|--------------------|-------|
| Performed Procedure Step Relationship Module | | | | |
| Patient's Name | (0010,0010) | PN | WL | |
| Patient ID | (0010,0020) | LO | WL | |
| Patient's Birth Date | (0010,0030) | DA | WL | |
| Patient's Sex | (0010,0040) | CS | WL | |
| Referenced Patient Sequence | (0008,1120) | SQ | WL | |
| Scheduled Step Attributes Sequence | (0040,0270) | SQ | WL | |
| >Study Instance UID | (0020,000D) | UI | WL | |
| >Referenced Study Sequence | (0008,1110) | SQ | WL | |
| >Accession Number | (0008,0050) | SH | WL | |
| >Placer Order Number | (0040,2016) | LO | WL | |
| >Filler Order Number | (0040,2017) | LO | WL | |
| >Requested Procedure ID | (0040,1001) | SH | WL | |
| >Requested Procedure Description | (0032,1060) | LO | WL | |
| >Scheduled Procedure Step ID | (0040,0009) | SH | WL | |
| >Scheduled Procedure Step Description | (0040,0007) | LO | WL | |
| >Scheduled Protocol Code Sequence | (0040,0008) | SQ | WL | |
| Performed Procedure Step Information Module | | | | |
| Performed Station AE Title | (0040,0241) | AE | From Configuration | |
| Performed Station Name | (0040,0242) | SH | Zero Length | |
| Performed Location | (0040,0243) | SH | Zero Length | |

APEX DICOM Conformance Statement

| | | | | |
|--------------------------------------|-------------|----|-------------------|---------------------------|
| Performed Procedure Step Start Date | (0040,0244) | DA | Actual Start Date | |
| Performed Procedure Step Start Time | (0040,0245) | TM | Actual Start Time | |
| Performed Procedure Step ID | (0040,0253) | SH | See Note 1 | |
| Performed Procedure Step End Date | (0040,0250) | DA | Zero Length | Actual End Date |
| Performed Procedure Step End Time | (0040,0251) | TM | Zero Length | Actual End Time |
| Performed Procedure Step Status | (0040,0252) | CS | IN PROGRESS | COMPLETED or DISCONTINUED |
| Performed Procedure Step Description | (0040,0254) | LO | Zero Length | |
| Performed Procedure Type Description | (0040,0255) | LO | Zero Length | |
| Procedure Code Sequence | (0008,1032) | SQ | Zero Length | |
| Image Acquisition Results Module | | | | |
| Modality | (0008,0060) | CS | WL | |
| Study ID | (0020,0010) | SH | Zero Length | |
| Performed Protocol Code Sequence | (0040,0260) | SQ | Zero Length | |
| Performed Series Sequence | (0040,0340) | SQ | Zero Length | |
| Radiation Module | | | | |
| Image Area Dose Product | (0018,115E) | DS | Zero Length | Actual Value |

Note 1. Performed Procedure Step ID attribute is populated from the Worklist attribute mapped to the Apex field "Procedure Code".

Each Modality Performed Procedure Step is uniquely identified by Affected SOP Instance UID attribute (0000,1000). It is generated by Apex when MPPS Instance is created.

4.2.1.3.5. Activity - Query Remote AE

4.2.1.3.5.1. Description and Sequencing of Activities

The user initiates Query from the Query Retrieve screen. The user may select a single Remote AE from the list of configured multiple Query SCPs.

The Apex AE initiates an association with the Query Retrieve SCP. Once the association has been established, the Apex sends a C-FIND request according to the user-configured parameters and waits for transmission of conformant Query service messages. The association is closed after retrieving the last message or in case of error. Received study information is displayed to the user.

Query is performed on Study level only.

Only a single attempt is be made to query the remote AE. If the query fails, for whatever reason, no retry will be performed.

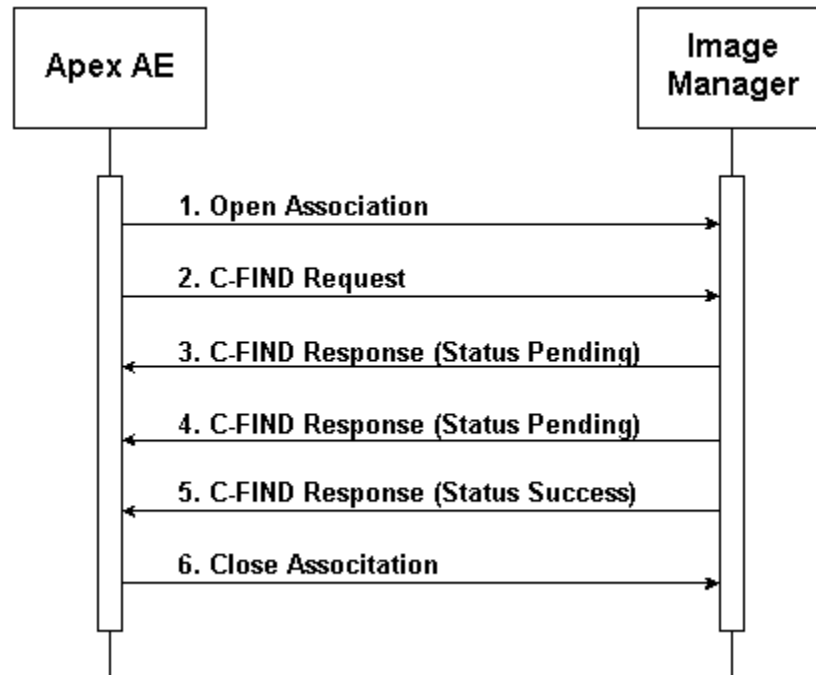


Figure 4.2-5. Sequencing of Activity – Query Remote AE

A possible sequence of interactions between the Apex AE and an Image Manager (e.g. a storage or archive device supporting the Query Retrieve SOP Classes as an SCP) is illustrated in the Figure above:

1. The Apex AE opens an association with the Image Manager.
2. The Apex AE sends a C-FIND request to the Image Manager containing the Query attributes.
3. The Image Manager returns a C-FIND response containing the requested attributes of the first matching study.
4. The Image Manager returns another C-FIND response containing the requested attributes of the second matching study.
5. The Image Manager returns another C-FIND response with status Success, indicating that no further matching studies exist. This example assumes that only 2 studies match the Query criteria.
6. The Apex AE closes the association with the Image Manager.

4.2.1.3.5.2. Proposed Presentation Contexts

**Table 4.2-20.
Proposed Presentation Contexts for Activity – Query Remote AE**

| Abstract Syntax | | Transfer Syntax | | Role | Extended Negotiation |
|--|-----------------|---------------------------|---------------------|------|----------------------|
| Name | UID | Name List | UID List | | |
| Study Root Query/Retrieve Model – FIND | 1.2.840.10008.5 | Implicit VR Little Endian | 1.2.840.10008.1.2 | SCU | None |
| | .1.4.1.2.2.1 | Explicit VR Little Endian | 1.2.840.10008.1.2.1 | | |
| | | Explicit VR Big Endian | 1.2.840.10008.1.2.2 | | |

4.2.1.3.5.3. SOP Specific Conformance

The following attributes may be entered by the user and used in Study Root Query request. (Only Study Level keys are supported.)

**Table 4.2-21.
Study Root Request Identifier**

| Attribute Name | Tag | Types of Matching |
|----------------------------|------------|-------------------|
| Patient ID | 0010, 0020 | S, *, U |
| Patient’s Name | 0010, 0010 | S, *, U |
| Patient’s Birth Date | 0010, 0030 | S |
| Study Date | 0008, 0020 | R |
| Study Time | 0008, 0030 | S |
| Accession Number | 0008, 0050 | S, *, U |
| Study ID | 0020, 0010 | S, *, U |
| Study Instance UID | 0020, 000D | S |
| Referring Physician’s Name | 0008, 0090 | S, *, U |
| Modalities In Study | 0008, 0061 | S |

Types of Matching: An "S" indicates the identifier attribute uses Single Value Matching, an "R" indicates Range Matching, an "*" indicates wildcard matching, and a "U" indicates Universal Matching.

The following table describes Apex behavior depending on Status Codes of messages received from the SCP.

**Table 4.2-22.
C-FIND Response Status Handling Behavior**

| Status | Status Code | Meaning | Apex Behavior |
|---------|-------------|--|---------------------------------|
| Success | 0000 | Matching is complete – No final Identifier is supplied | Completes retrieving of matches |

APEX DICOM Conformance Statement

| | | | |
|-----------------------------------|-------|---|--|
| Pending | FF00 | Matches are continuing – Current Match is supplied and any Optional Keys were supported in the same manner as Required Keys | Receiving of matches continues |
| Pending (No Optional Key Support) | FF01 | Matches are continuing – Warning that one or more Optional Keys were not supported for existence for this Identifier | Receiving of matches continues without any warnings or errors |
| Other | Other | All other Status Codes | Terminates receiving of matches. Status code and contents of the Error Comment attribute (0000,0902) (if present) is logged. Error message is displayed. Matches received prior to this code are handled normally. |

The behavior of Apex AE during communication failure is summarized in the table below:

**Table 4.2-23.
Communication Failure Behavior**

| Exception | Behavior |
|--|---|
| Association can not be established | Error is logged. Error message is displayed. |
| Timeout | Error is logged. Error message is displayed. |
| Association aborted by the SCP or network layers | Matches received prior to this code are handled normally. |

4.2.1.3.6. Activity – Retrieve from Remote AE

4.2.1.3.6.1. Description and Sequencing of Activities

The user initiates Retrieve requests via the User Interface in two ways.

1. The user makes a selection from the entries displayed on the Query Retrieve screen as result of last Query Request, and presses the Retrieve button. Retrieve Request is performed on Study level. Study Instance UIDs obtained during the Query Request are used as Request Identifiers.

The Apex AE opens an association with the same Remote AE that was used for Query Request. A separate C-MOVE Request is issued for each study. Upon processing C-MOVE Requests for all selected studies, the Apex AE closes the association.

The Apex displays number of retrieved studies on the Query Retrieve screen and is updates it each time when new study is retrieved.

2. The user makes a selection from the entries displayed on the Locate screen and presses the Restore button. Retrieve Request is performed on Series level using the information stored in the local database.

The Apex may be configured to use a Storage SCP as an archive location. In this case, a separate Retrieve SCP may be associated with this Storage SCP, and subsequent Retrieve Requests will be issued to that Retrieve SCP. If no Retrieve SCP is associated with a Storage SCP, then the Storage SCP is used also as a Retrieve SCP.

Upon successful completion of a Storage Request to an archive location, the network parameters of the Retrieve SCP, Study Instance UID, and Series Instance UID of the sent image are stored in the local database.

When the user initiates the Retrieve request, the Apex AE tries to establish an association with Remote AE using network parameters stored in the local database for images being retrieved. If the association cannot be established, the Apex AE searches for the network parameters for this Remote AE in the currently configured list of Retrieve SCPs, and tries to open an association using this data. If the association cannot be established, the Apex AE searches for the network parameters for this Remote AE in the currently configured list of Storage SCPs, and tries to open an association using this data.

Upon establishing the association, the Apex AE issues a separate C-MOVE Request for each Series. Upon processing C-MOVE Requests for all selected images, the Apex AE closes the association.

Study Instance UID and Series Instance UID stored in the local database are used as Request Identifier.

The Retrieve Requests are issued at the background, without further interaction with the user.

In both cases, if Retrieve Request fails for any reason, it is placed in the queue for subsequent retries according to the configuration settings. The user may monitor status of Retrieve Requests and delete them from the queue via the View Queue screen.

The Apex AE Title is used as Move Destination. The Apex AE accepts associations from Retrieve SCP and processes received C-STORE Requests.

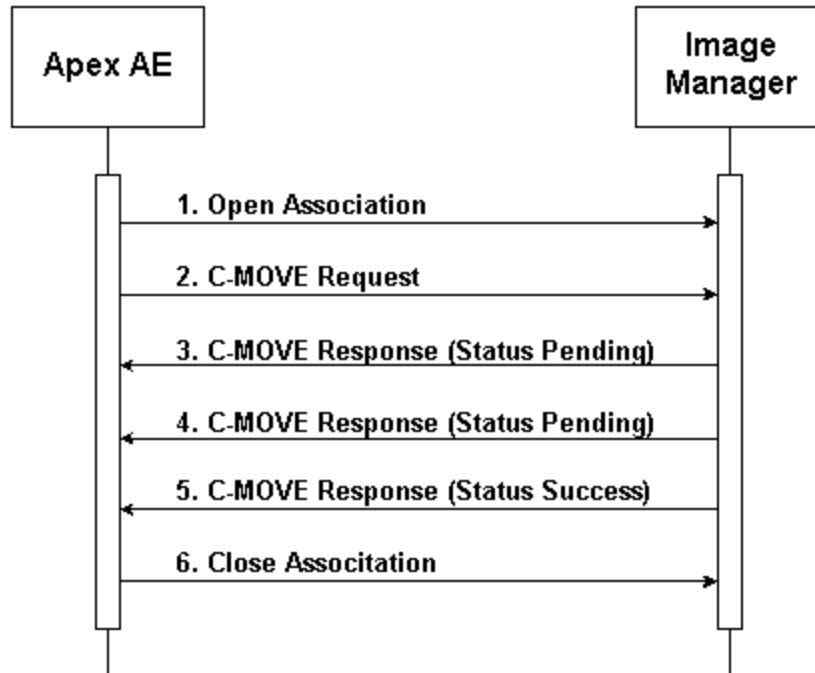


Figure 4.2-6. Sequencing of Activity – Retrieve from Remote AE

A possible sequence of interactions between the Apex AE and an Image Manager (e.g. a storage or archive device supporting the Query Retrieve SOP Classes as an SCP) is illustrated in the Figure above:

1. The Apex AE opens an association with the Image Manager.
2. The Apex AE sends a C-MOVE request to the Image Manager containing the Request Identifier.
3. The Image Manager returns a C-MOVE response containing the status of moving images for a specified study or series.
4. The Image Manager returns another C-MOVE response containing the updated status of moving images for a specified study or series.
5. The Image Manager returns another C-MOVE response with status Success, indicating that moving is completed.
6. The Apex AE closes the association with the Image Manager.

4.2.1.3.6.2. Proposed Presentation Contexts

Table 4.2-24.

Proposed Presentation Contexts for Activity – Retrieve from Remote AE

| Abstract Syntax | | Transfer Syntax | | Role | Extended Negotiation |
|--|-----------------------------|---------------------------|---------------------|------|----------------------|
| Name | UID | Name List | UID List | | |
| Study Root Query/Retrieve Model - MOVE | 1.2.840.10008.5.1.4.1.2.2.2 | Implicit VR Little Endian | 1.2.840.10008.1.2 | SCU | None |
| | | Explicit VR Little Endian | 1.2.840.10008.1.2.1 | | |
| | | | | | |

APEX DICOM Conformance Statement

| | | | | | |
|--|--|---------------------------|-------------------------|--|--|
| | | Explicit VR Big Endian | 1.2.840.10008. 1.2.2 | | |
|--|--|---------------------------|-------------------------|--|--|

4.2.1.3.6.3. SOP Specific Conformance

The table below describes Study Root Request Identifier:

**Table 4.2-25.
C-MOVE Request Identifier**

| Attribute Name | Tag | Unique, Matching, or Return Key |
|---------------------|-------------|------------------------------------|
| Study Level | | |
| Study Instance UID | (0020,000D) | U |
| Series Level | | |
| Study Instance UID | (0020,000D) | M |
| Series Instance UID | (0020,000E) | U |

The following table describes Apex behavior depending on Status Codes of messages received from the SCP.

**Table 4.2-26.
C-MOVE Response Status Handling Behavior**

| Status | Status Code | Meaning | Apex Behavior |
|---------|-------------|--|---|
| Success | 0000 | All instances are retrieved successfully | Updates retrieve status if running on the foreground, otherwise no action. |
| Pending | FF00 | Continuing retrieving instances. | Updates retrieve status if running on foreground, otherwise no action. |
| Other | Other | All other Status Codes | A list of ailed SOP Instance UIDs, status code, and contents of the Error Comment attribute (0000,0902) (if present) is logged. Studies retrieved prior to this code are handled normally. |

The behavior of Apex AE during communication failure is summarized in the table below:

Table 4.2-27.

Communication Failure Behavior

| Exception | Behavior |
|--|---|
| Association can not be established | Error is logged. Error message is displayed if running on the foreground. |
| Timeout | Error is logged. Matches received prior to this code are handled normally. Error message is displayed if running on the foreground. |
| Association aborted by the SCP or network layers | |

4.2.1.3.7. Activity – Send Verification Request

4.2.1.3.7.1. Description and Sequencing of Activities

The Apex AE initiates an association with the Verification SCP by the user request and issues the C-ECHO command.

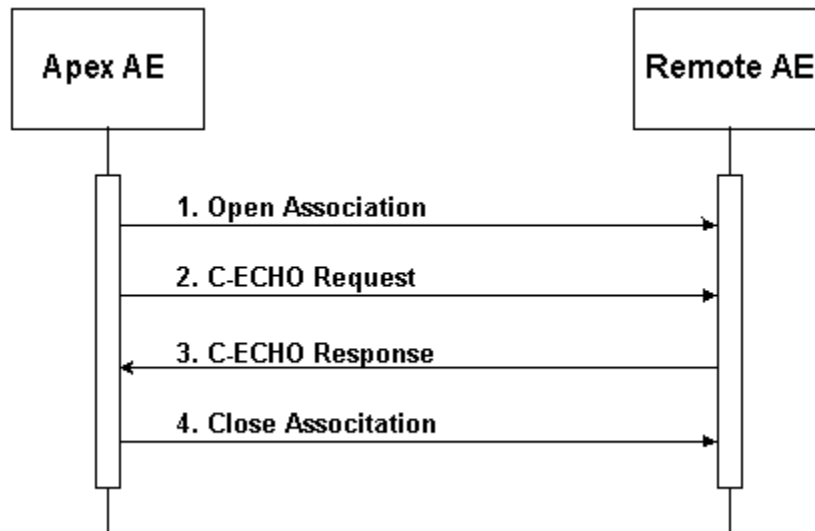


Figure 4.2-7. Sequencing of Activity – Retrieve from Remote AE

A possible sequence of interactions between the Apex AE and a Remote AE is illustrated in the Figure above:

1. The Apex AE opens an association with the Remote AE.
2. The Apex AE sends a C-ECHO request to the Remote AE
3. The Remote AE returns a C-ECHO response.
4. The Apex AE closes the association with Remote AE.

4.2.1.3.7.2. Proposed Presentation Contexts

Table 4.2-28.

Proposed Presentation Contexts for Activity – Send Verification Request

| Abstract Syntax | Transfer Syntax | Role | Extended |
|------------------------|------------------------|-------------|-----------------|
| | | | |

APEX DICOM Conformance Statement

| Name | UID | Name List | UID List | | Negotiation |
|--------------|-------------------|---------------------------|---------------------|-----|-------------|
| Verification | 1.2.840.10008.1.1 | Implicit VR Little Endian | 1.2.840.10008.1.2 | SCU | None |
| | | Explicit VR Little Endian | 1.2.840.10008.1.2.1 | | |
| | | Explicit VR Big Endian | 1.2.840.10008.1.2.2 | | |

4.2.1.4. Association Acceptance Policy

The Apex AE accepts associations for the Real-World Activities:

- Storage
- Storage Commitment
- Verification

The Apex AE may reject associations as shown in the table below:

**Table 4.2-29.
Association Rejection Reasons**

| Result | Reason/Diag | Explanation |
|------------------------|--------------------------|---|
| 2 – rejected-transient | 2 – local-limit-exceeded | The (configurable) maximum number of simultaneous associations has been reached. An association request with the same parameters may succeed at a later time. |
| 1 – rejected-permanent | 1 – no-reason-given | The association request could not be parsed. An association request with the same format will not succeed at a later time. |

4.2.1.4.1. Activity – Receive Storage Commitment Response

4.2.1.4.1.1. Description and Sequencing of Activities

The Apex AE will accept associations in order to receive responses to a Storage Commitment Request.

All Storage Commitment queue entries corresponding to SOP Instance UIDs contained in the Referenced SOP Sequence (0008, 1199) will be marked as successfully committed.

All Storage Commitment queue entries corresponding to SOP Instance UIDs contained in the Failed SOP Sequence (0008, 1198) will be marked as failed.

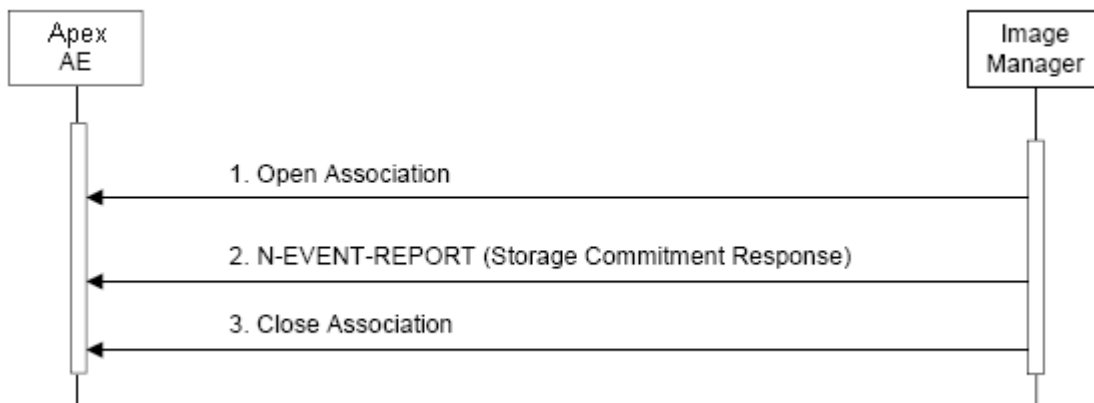


Figure 4.2-8. Sequencing of Activity – Receive Storage Commitment Response

A possible sequence of interactions between the Apex AE and an Image Manager (e.g. a storage or archive device supporting Storage Commitment SOP Classes as an SCP) is illustrated in the Figure above:

1. The Image Manager opens a new association with the Apex AE.
2. The Image Manager sends an N-EVENT-REPORT request notifying the Apex AE of the status of a previous Storage Commitment Request. The Apex AE replies with a N-EVENT-REPORT response confirming receipt.
3. The Image Manager closes the association with the Apex AE.

4.2.1.4.1.2. Proposed Presentation Contexts

**Table 4.2-30.
Acceptable Presentation Contexts for Activity – Receive Storage Commitment Response**

| Abstract Syntax | | Transfer Syntax | | Role | Extended Negotiation |
|-------------------------------|----------------------|---------------------------|---------------------|------|----------------------|
| Name | UID | Name List | UID List | | |
| Storage Commitment Push Model | 1.2.840.10008.1.20.1 | Implicit VR Little Endian | 1.2.840.10008.1.2 | SCU | None |
| | | Explicit VR Little Endian | 1.2.840.10008.1.2.1 | | |
| | | Explicit VR Big Endian | 1.2.840.10008.1.2.2 | | |

4.2.1.4.1.3. SOP Specific Conformance

The Apex AE supports following attributes used in N-EVENT-REPORT message received from the SCP:

Table 4.2-31.

Supported Attributes for N-EVENT-REPORT Request

| Attribute Name | Attribute Tag |
|------------------------------|---------------|
| Transaction UID | 0008,1195 |
| Retrieve AE Title | 0008,0054 |
| Referenced SOP Sequence | 0008, 1199 |
| >Referenced SOP Class UID | 0008,1150 |
| >Referenced SOP Instance UID | 0008,1155 |
| Failed SOP Sequence | 0008,1198 |
| >Referenced SOP Class UID | 0008,1150 |
| >Referenced SOP Instance UID | 0008,1155 |

The following table describes Status Codes that Apex sends back to the SCP:

Table 4.2-32.

N-EVENT_REPORT Response Status Reasons

| Status | Status Code | Meaning |
|---------|-------------|---|
| Success | 0000 | N-EVENT-REPORT processed successfully |
| Failure | C000 | All types of failure. Error Comment attribute (0000,0902) is populated with error description. Error is logged. |

4.2.1.4.2. Activity – Retrieve Images

4.2.1.4.2.1. Description and Sequencing of Activities

Upon sending a C-MOVE request to the Query/Retrieve SCP, the Apex AE waits for associations with C-STORE request messages from the SCP. It accepts the associations and sends back C-STORE response messages.

Upon receiving and accepting a C-STORE request, the Apex AE parses received DICOM message. If the message contains private Apex scan data, the application extracts it and restores the Apex scan into the system. The rest of the DICOM message content is discarded.

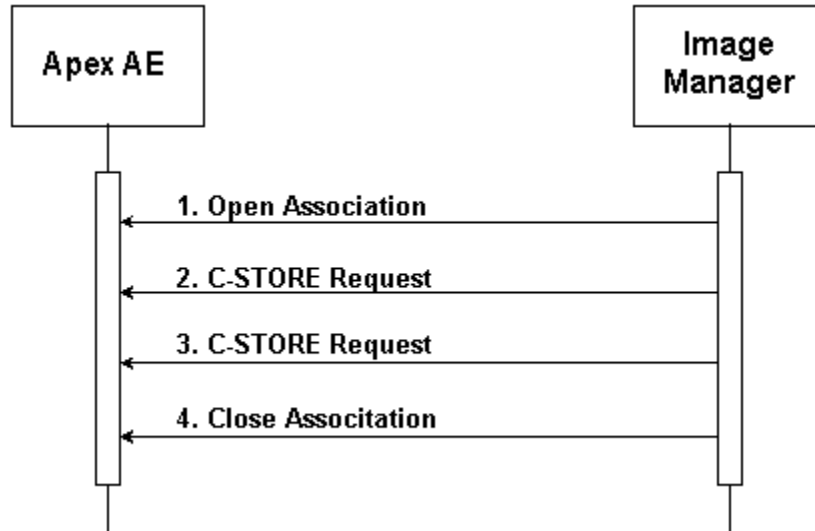


Figure 4.2-9 Sequencing of Activity – Retrieve Images

A possible sequence of interactions between the Apex AE and an Image Manager is illustrated in the Figure above:

1. The Image Manager opens a new association with the Apex AE.
2. The Image Manager transmits an SC Image using C-STORE Request and receives from Apex a C-STORE Response with status Success.
3. The Image Manager transmits another SC Image using C-STORE Request and receives from Apex a C-STORE Response with status Success.
4. The Image Manager closes the association with the Apex AE.

4.2.1.4.2.2. Proposed Presentation Contexts

**Table 4.2-33.
Acceptable Presentation Contexts for Activity – Retrieve Images**

| Abstract Syntax | | Transfer Syntax | | Role | Extended Negotiation |
|---------------------------------|---------------------------|---------------------------|---------------------|------|----------------------|
| Name | UID | Name List | UID List | | |
| Secondary Capture Image Storage | 1.2.840.10008.5.1.4.1.1.7 | Implicit VR Little Endian | 1.2.840.10008.1.2 | SCU | None |
| | | Explicit VR Little Endian | 1.2.840.10008.1.2.1 | | |
| | | Explicit VR Big Endian | 1.2.840.10008.1.2.2 | | |

4.2.1.4.2.3. SOP Specific Conformance

Apex application uses following attributes of the C-STORE request message. (The rest of the attributes are ignored.)

**Table 4.2-34.
Supported Attributes for C-STORE Request**

| Attribute Name | Tag | Notes |
|------------------------------|------------|--------|
| Manufacturer | 0008, 0070 | Note 1 |
| Study Instance UID | 0020, 000D | |
| Series Instance UID | 0020, 000E | |
| Date of Secondary Capture | 0018, 0012 | |
| Time of Secondary Capture | 0018, 0014 | |
| Image Comments | 0020, 4000 | |
| Private Creator Data Element | 0023, 0010 | Note 1 |
| Encoding Scheme Version | 0023, 1000 | |
| P File Name | 0023, 1001 | |
| P File Data | 0023, 1002 | |
| P File Length | 0023, 1003 | |
| R File Data | 0023, 1004 | |
| R File Length | 0023, 1005 | |

Note 1. The expected value is “HOLOGIC”. In case of any other value the file is ignored.

The following table describes Status Codes that Apex sends back to SCP:

**Table 4.2-35.
S-STORE Response Status Reasons**

| Status | Status Code | Meaning |
|---------|-------------|---|
| Success | 0000 | C-STORE processed successfully |
| Failure | C000 | All types of failure. Error Comment attribute (0000,0902) is populated with error description. The error is logged. |

4.2.1.4.3. Activity – Receive Verification Request

4.2.1.4.3.1. Description and Sequencing of Activities

The Apex AE accepts an association from the Verification SCU, receives the C-ECHO Request and issues the C-ECHO Response.

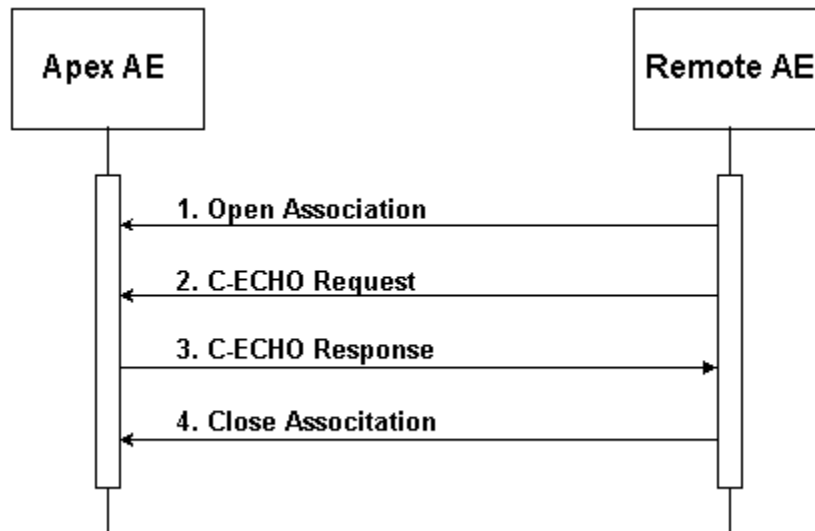


Figure 4.2-10 Sequencing of Activity – Receive Verification Request

A possible sequence of interactions between the Apex AE and a Remote AE is illustrated in the Figure above:

1. The Remote AE opens a new association with the Apex AE.
2. The Remote AE sends a C-ECHO Request.
3. The Apex AE sends a C-ECHO Response.
4. The Remote AE closes the association with the Apex AE.

4.2.1.4.3.2. Proposed Presentation Contexts

**Table 4.2-36.
Acceptable Presentation Contexts for Activity – Receive Verification Request**

| Abstract Syntax | Transfer Syntax | Role | Extended |
|-----------------|-----------------|------|----------|
| | | | |

APEX DICOM Conformance Statement

| Name | UID | Name List | UID List | | Negotiation |
|--------------|-------------------|---------------------------|---------------------|-----|-------------|
| Verification | 1.2.840.10008.1.1 | Implicit VR Little Endian | 1.2.840.10008.1.2 | SCU | None |
| | | Explicit VR Little Endian | 1.2.840.10008.1.2.1 | | |
| | | Explicit VR Big Endian | 1.2.840.10008.1.2.2 | | |

4.3. Network Interfaces

4.3.1. Supported Communication Stacks

DICOM Upper Layer (PS 3.8.) is supported using TCP/IP.

4.3.2. TCP/IP Stack

The TCP/IP stack is inherited from the operating system on which it is running.

4.3.3. Physical Media Support

The physical medium is inherited from the computer on which it is running.

4.4. Configuration

4.4.1. AE Title / Presentation Address Mapping

4.4.1.1. Local AE Title / Presentation Address Mapping

The local application AE Title and listening TCP/IP port is user configurable via the Apex System Configuration screen.

4.4.1.2. Remote AE Title / Presentation Address Mapping

The remote applications AE Titles and listening TCP/IP ports are user configurable via the Apex System Configuration screen.

4.4.1.2.1. Storage

The user may configure Storage SCP AE Title, IP Address/Host Name, Port Number, and Destination Name. Multiple Storage SCPs can be defined. The Destination Name should be unique for each defined Storage SCP.

A Storage SCP can be configured to use Storage Commitment, causing storage commitment to be requested for images or presentation states transmitted to the device. Existing (already defined) Storage Commitment SCP can be associated with the Storage SCP, or a new one may be added. Storage Commitment Requests will be issued to the Storage Commitment SCP associated with the Storage SCP. Storage Commitment SCP is configured separately and can have the same AE Title / Presentation Address as the Storage SCP, or different AE Title / Presentation Address.

A Storage SCP can be configured to be an “archive location”. In this case, Apex scans can be retrieved from the archive location using Query Retrieve. Existing (already defined) Query Retrieve SCP can be associated with the Storage SCP, or a new one may be added. Subsequent Retrieve Requests will be issued to the Query Retrieve SCP associated with the Storage SCP. Query Retrieve SCP is configured separately and can have the same AE Title / Presentation Address as the Storage SCP, or different AE Title / Presentation Address. If a Storage SCP is configured as “archive location” and no Query Retrieve SCP is associated with it, then subsequent Retrieve Requests will be issued to the Storage SCP.

4.4.1.2.2. Storage Commitment

The user may configure Storage Commitment SCP AE Title, IP Address/Host Name, Port Number, and Destination Name. Multiple Storage Commitment SCPs can be defined. The Destination Name should be unique for each defined Storage Commitment SCP.

4.4.1.2.3. Query Retrieve

The user may configure Query Retrieve SCP AE Title, IP Address/Host Name, and Port Number. Multiple Query Retrieve SCPs can be defined. The AE Title should be unique for each defined Query Retrieve SCP.

4.4.1.2.4. Modality Worklist

The user may configure Worklist SCP AE Title, IP Address/Host Name, and Port Number. Only one Worklist SCP can be defined.

A Worklist SCP can be configured to enable Modality Performed Procedure Step. MPPS SCP is configured separately and can have the same AE Title / Presentation Address as the Worklist SCP, or different AE Title / Presentation Address.

4.4.1.2.5. Modality Performed Procedure Step

The user may configure MPPS SCP AE Title, IP Address/Host Name, and Port Number. Only one MPPS SCP can be defined.

4.4.2. Parameters

The table below describes parameters that can be configured by the user for Storage, Storage Commitment, and Query Retrieve activities.

**Table 4.4-1.
User Configurable Parameters for Storage, Storage Commitment, and Query Retrieve**

| Category | For all Remote AEs or separately for each Remote AE | Parameters | Default Value | Comments |
|-----------------------------|--|------------------------|----------------------|--|
| Storage | | | | |
| System Parameters | All AEs | Institution Name | None | Populates the “Institution Name” attribute (0008,0080) |
| | | Station Name | None | Populates the “Station Name” attribute (0008,1010) |
| Send Parameters | For each AE | Interpreting Physician | None | Populates the “Physician Reading Study” attribute (0008,1060) in all DICOM files |
| | | Grayscale Only | No | Send images in color or grayscale |
| | | Presentation Files | No | Send GSPS files (for IVA scans only) |
| | | IVA Results Files | No | Send IVA Results files (for IVA scans only) |
| | | Unicode | Yes | Encode strings using extended character set ISO_IR 192 |
| Storage Commitment Provider | For each AE | Use Storage Commitment | No | Request Storage Commitment for all sent DICOM files |
| | | Select a Provider | None | Storage Commitment SCP |

APEX DICOM Conformance Statement

| | | | | |
|----------------------------|-------------|--------------------------------|-------|--|
| Enterprise Data Management | For each AE | Scan Archive Location | No | Include Apex scan data for subsequent Query Retrieve |
| | | Select a Provider | None | Query Retrieve SCP |
| Automatic Retry Parameters | All AEs | Retry Number (times) | 600 | Number of times a failed job may be retried |
| | | Retry Interval (Min) | 20 | Delay between retrying failed jobs |
| Log Management | All AEs | Purge Log Entries After N Days | 10 | Purge old entries from the log |
| Display | For each AE | Active | Yes | Display this SCP to the user among available SCPs |
| Data Fields | All AEs | Worklist Sets Modality | Yes | Use modality obtained from MWL or specified by the user |
| | | Modality | OT | Modality to put into DICOM file (if modality from MWL is not used) |
| | | Study Description | Blank | Study description to put into DICOM file (if study description from MWL is not used) |
| Storage Commitment | | | | |
| Automatic Retry Parameters | All AEs | Retry Number (times) | 3 | Number of times a failed job may be retried |
| | | Retry Interval (Min) | 20 | Delay between retrying failed jobs |
| Log Management | All AEs | Purge Log Entries After N Days | 10 | Purge old entries from the log |
| Mode | All AEs | Image-by-image or Batch | Batch | A separate Commit Request for each sent file or one Request for all files |
| Display | For each AE | Active | Yes | Display this SCP to the user among available SCPs |
| Query Retrieve | | | | |
| Display | For each AE | Active | Yes | Display this SCP to the user among available SCPs |

The table below describes parameters that can be configured by the user for Modality Worklist and Modality Performed Procedure Step activities. The user account has to have Windows Administrator rights to configure these parameters.

APEX DICOM Conformance Statement

**Table 4.4-2.
User Configurable Parameters for Modality Worklist**

| Category | Parameters | Default Value | Comments |
|-----------------------------|-----------------------------|----------------------|---|
| Modality Worklist | | | |
| Query Parameters | Default query | | |
| | Scheduled Station AE Title | None | Accessible via the System Configuration screen, used for automatic and default queries. |
| | Modality | None | |
| | Days Back | 60 | |
| | Days Forward | 2 | |
| | Maximum Hits Per Query | 60 | |
| | Detailed query | | |
| | Patient ID | None | Accessible via the Worklist screen, used for user-interactive queries |
| | Patient Name | None | |
| | Accession Number | None | |
| | Requested Procedure ID | None | |
| | Detailed Query | Enable | Yes |
| Automatic Query Interval | Every day at specified time | No | |
| | Every N hours | No | |
| | Never | Yes | |
| Automatic Retry Parameters | Query Timeout (min) | 20 | |
| | Retry Number | 3 | Number of times a failed job may be retried |
| | Retry Interval (min) | 20 | Delay between retrying failed jobs |
| Patient Matching Parameters | Patient Name | No | Selected parameters are used for matching a selected Worklist entry with an Apex patient existing in local patient database |
| | Patient ID | Yes | |
| | Patient ID2 | No | |
| | Patient Ethnicity | No | |
| | Patient DOB | Yes | |
| Purge Interval | Used Entries (days) | 100 | Clean up entries, procedures for which have been performed |
| | Unused Entries (days) | 100 | Clean up entries, procedures for which have never been performed |
| Input from File | Enable | No | For EMR (Electronic Medical record) mode |
| | Input File | None | |
| MPPS | Enable | No | Enable creating MPPS Instances |

APEX DICOM Conformance Statement

The table below describes Apex fields that can be mapped to the Modality Worklist attributes. The user account has to have Windows Administrator rights to configure these parameters.

**Table 4.4-3.
Attribute Mapping for Modality Worklist**

| Apex Field | Worklist Attributes Available for Mapping | Default Selection |
|----------------------|--|--|
| Patient Name | Patient Name (0010,0010) | Patient Name (0010,0010) |
| | Other Patient Names (0010,1001) | |
| | Patient Birth Name (0010,1005) | |
| | Patient Mother Birth Name (0010,1060) | |
| Patient ID | Patient ID (0010,0020) | Patient ID (0010,0020) |
| Patient ID2 | Patient Name (0010,0010) | None |
| | Patient ID (0010,0020) | |
| | Other Patient IDs (0010,1000) | |
| Patient Ethnicity | Ethnic Group (0010,2160) | None |
| | Religious Preference (0010,21F0) | |
| Patient DOB | Patient Age (0010,1010) | Patient Birth Date (0010,0030) |
| | Patient Birth Date (0010,0030) | |
| Patient Sex | Patient Sex (0010,0040) | Patient Sex (0010,0040) |
| Patient Weight | Patient Size (0010,1020) | Patient Weight (0010,1030) |
| | Patient Weight (0010,1030) | |
| Patient Height | Patient Size (0010,1020) | None |
| Referring Physician | Requesting Physician (0032,1032) | Referring Physician (0008,0090) |
| | Referring Physician (0008,0090) | |
| Procedure Code | Scheduled Procedure Step ID (0040,0009) | Scheduled Procedure Step ID (0040,0009) |
| | Requested Procedure ID (0040,1001) | |
| | Accession Number (0008,0050) | |
| | Admission ID (0038,0010) | |
| Study Name | Scheduled Procedure Step Description (0040,0007) | Scheduled Procedure Step Description (0040,0007) |
| | Scheduled Procedure Step ID (0040,0009) | |
| | Scheduled Action Item Code Sequence (0040,0008) / Code Value (0008,0100) | |
| | Requested Procedure Code Sequence (0032,1064) / Code Value (0008,0100) | |
| | Requested Procedure ID (0040,1001) | |
| | Accession Number (0008,0050) | |
| | Admission ID (0038,0010) | |
| Procedure Start Date | Scheduled Procedure Step Start Date (0040,0002) | Scheduled Procedure Step Start Date (0040,0002) |
| | Admitting Date (0038,0020) | |
| HL7 Field 1 | All attributes | None |
| HL7 Field 2 | All attributes | None |
| HL7 Field 3 | All attributes | None |

APEX DICOM Conformance Statement

| | | |
|----------------------|--|------------------------------|
| Unique Procedure Key | Accession Number (0008,0050) Study Instance UID (0020,000D) | Accession Number (0008,0050) |
| Study Description | Scheduled Procedure Step Description (0040,0007) | None |

The table below describes parameters that can be configured only by the Hologic Service Engineer.

**Table 4.4-2.
Service Engineer Configurable Parameters**

| Parameter | Were Used |
|--|--|
| Maximum number of simultaneous incoming associations | Query Retrieve, Storage Commitment, Verification |
| Attributes used as Worklist Query Return Keys | Worklist |
| Attributes used for creating MPPS Instances | MPPS |
| Attributes available for mapping to Apex data fields | Worklist |

5. Media Interchange

5.1. Implementation Model

5.1.1. Application Data Flow

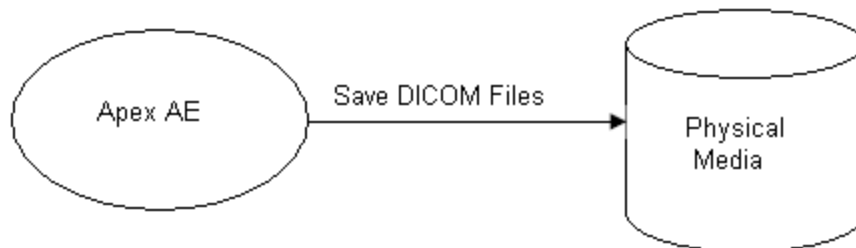


Figure 5.1-1. Application data Flow Diagram for Media Storage

The Apex AE saves DICOM files for selected scans to Physical Media.

5.1.2. Functional Definition of AEs

The user saves Apex scans by selecting a scan and pressing “Save as...” button on the Apex DICOM Reports screen. The files are saved into a directory selected by the user.

5.1.3. Sequencing of Real-World Activities

Only one Apex scan may be saved at a time.

5.1.4. File Meta Information

The implementation information written to the File Meta Header in each file is:

**Table 5.1-1.
DICOM Implementation Information**

| | |
|--------------------------|----------------|
| Implementation Class UID | 1.2.840.113850 |
|--------------------------|----------------|

5.2. AE Specifications

The Apex Application Entity supports the SOP Classes and Transfer Syntaxes listed in the table below:

**Table 5.2-1.
IODs, SOP Classes, and Transfer Syntaxes**

| | | | |
|---------------------------------|---------------------------|---------------------------|-------------------|
| Secondary Capture Image Storage | 1.2.840.10008.5.1.4.1.1.7 | Implicit VR Little Endian | 1.2.840.10008.1.2 |
|---------------------------------|---------------------------|---------------------------|-------------------|

6. Support of Character Sets

6.1. Reading Messages

When processing DICOM messages (received over the network or read from DICOM files), the Apex supports character sets as described below.

6.1.1. Single Byte Character Sets without Code Extensions

| Character Set Description | Defined Term |
|----------------------------------|---------------------|
| Default repertoire | None |
| Latin alphabet No 1 | ISO_IR 100 |
| Latin alphabet No 2 | ISO_IR 101 |
| Latin alphabet No 3 | ISO_IR 109 |
| Latin alphabet No 4 | ISO_IR 110 |
| Cyrillic | ISO_IR 144 |
| Arabic | ISO_IR 127 |
| Greek | ISO_IR 126 |
| Hebrew | ISO_IR 138 |
| Latin alphabet No 5 | ISO_IR 148 |
| Japanese | ISO_IR 13 |
| Thai | ISO_IR 166 |

6.1.2. Multi-Byte Character Sets without Code Extensions

| Character Set Description | Defined Term |
|----------------------------------|---------------------|
| Unicode in UTF-8 | ISO_IR 192 |
| GB18030 | GB18030 |

6.1.3. Single Byte Character Sets with Code Extensions

| Character Set Description | Defined Term |
|----------------------------------|---------------------|
| Default repertoire | ISO 2022 IR 6 |
| Latin alphabet No 1 | ISO 2022 IR 100 |
| Latin alphabet No 2 | ISO 2022 IR 101 |
| Latin alphabet No 3 | ISO 2022 IR 109 |
| Latin alphabet No 4 | ISO 2022 IR 110 |
| Cyrillic | ISO 2022 IR 144 |
| Arabic | ISO 2022 IR 127 |
| Greek | ISO 2022 IR 126 |
| Hebrew | ISO 2022 IR 138 |
| Latin alphabet No 5 | ISO 2022 IR 148 |
| Japanese | ISO 2022 IR 13 |
| Thai | ISO 2022 IR 166 |

6.1.4. Multi-Byte Character Sets with Code Extensions

| Character Set Description | Defined Term |
|--|---------------------|
| Japanese (JIS X 0208: Kanji) | ISO 2022 IR 87 |
| Japanese (JIS X 0212: Supplementary Kanji set) | ISO 2022 IR 159 |
| Korean (KS X 1001: Hangul and Hanja) | ISO 2022 IR 149 |

6.2. Creating Messages

When creating DICOM messages, the Apex supports following character sets:

| Character Set Description | Defined Term |
|----------------------------------|---------------------|
| Default repertoire | None |
| Unicode in UTF-8 | ISO_IR 192 |

7. Security

Apex Modality does not support any specific security measures.
It is assumed that Apex Modality is used within a secured environment.

8. Annexes

8.1. IOD Contents

8.1.1. Created SOP Instances

Tables below specify the attributes of Secondary Capture Images and Grayscale Softcopy Presentation States transmitted by the Apex application.

APEX DICOM Conformance Statement

The tables use a number of abbreviations.

The abbreviations used in the “Presence of ...” column are:

| | |
|--------|--|
| VNAP | Value Not Always Present (attribute sent zero length if no value is present) |
| ANAP | Attribute Not Always Present |
| ALWAYS | Always Present |
| EMPTY | Attribute is sent without a value |

The abbreviations used in the “Source” column:

| | |
|--------|---|
| MWL | The attribute value source is from Modality Worklist |
| USER | The attribute value source is from User input |
| AUTO | The attribute value is generated automatically |
| MPPS | The attribute value is the same as that use for Modality Performed Procedure Step |
| CONFIG | The attribute value source is a configurable parameter |

Note: All dates and times are encoded in the local configured calendar and time.

**Table 8.1-1.
IOD of Created SC SOP Instances for Apex Scan Images**

| Attribute Name | Tag | VR | Value | Presence of Value | Source |
|-----------------------------|-------------|----|--------------------------|-------------------|---------------|
| Patient Module | | | | | |
| Patient’s Name | (0010,0010) | PN | Note 1 | VNAP | MWL/USER |
| Patient ID | (0010,0020) | LO | Note 2 | VNAP | MWL/USER |
| Patient’s Birth Date | (0010,0030) | DA | Note 3 | VNAP | MWL/USER |
| Patient’s Sex | (0010,0040) | CS | Note 4 | VNAP | MWL/USER |
| Other Patient IDs | (0010,1000) | LO | From Worklist | VNAP | MWL |
| General Study Module | | | | | |
| Study Instance UID | (0020,000D) | UI | Note 5 | ALWAYS | MWL/AUTO/USER |
| Study Date | (0008,0020) | DA | <yyyymmdd> | ALWAYS | AUTO |
| Study Time | (0008,0030) | TM | <hhmmss> | ALWAYS | AUTO |
| Referring Physician’s Name | (0008,0090) | PN | Note 6 | VNAP | MWL/USER |
| Study ID | (0020,0010) | SH | Same as Accession Number | VNAP | AUTO |
| Accession Number | (0008,0050) | SH | Note 7 | VNAP | MWL/AUTO/USER |
| Study Description | (0008,1030) | LO | Note 15 | ANAP | MWL/CONFIG |

APEX DICOM Conformance Statement

| | | | | | |
|---------------------------------------|-------------|----|---|----------------|------------|
| Physician Reading Study | (0008,1060) | PN | Note 8 | VNAP | USER |
| General Series Module | | | | | |
| Modality | (0008,0060) | CS | Note 9 | ALWAYS | MWL/CONFIG |
| Series Instance UID | (0020,000E) | UI | Generated by Apex | ALWAYS | AUTO |
| Series Number | (0020,0011) | IS | Generated by Apex | ALWAYS | AUTO |
| Laterality | (0020,0060) | CS | Note 10 | ANAP | AUTO |
| Body Part Examined | (0018,0015) | CS | Note 11 | VNAP | AUTO |
| Request Attribute Sequence | (0040,0275) | SQ | Note 12 | ANAP | MWL |
| >Requested Procedure ID | (0040,1001) | SH | Note 12 | ANAP | MWL |
| >Scheduled Procedure Step Description | (0040,0007) | LO | Note 12 | ANAP | MWL |
| >Scheduled Procedure Step ID | (0040,0009) | SH | Note 12 | ANAP | MWL |
| Referenced Study Component Sequence | (0008,1111) | SQ | Included if MPPS SOP Instance was created for this scan | ANAP | MPPS |
| >Referenced SOP Class UID | (0008,1150) | UI | MPPS SOP Class UID | ANAP | MPPS |
| >Referenced SOP Instance UID | (0008,1155) | UI | Generated by Apex | ANAP | MPPS |
| Protocol Name | (0018,1030) | LO | Zero length | EMPTY | AUTO |
| PPS Start Date | (0040,0244) | DA | Same as Study Date | VNAP | MPPS |
| PPS Start Time | (0040,0245) | TM | Same as Study Time | VNAP | MPPS |
| PPS ID | (0040,0253) | SH | Generated by Apex | VNAP | MPPS |
| PPS Description | (0040,0254) | LO | Zero length | VNAP/ EMPTY | MPPS |
| General Equipment Module | | | | | |
| Manufacturer | (0008,0070) | LO | HOLOGIC | ALWAYS | AUTO |
| Institution Name | (0008,0080) | LO | From Configuration | ALWAYS | CONFIG |
| Station Name | (0008,1010) | SH | From | ALWAYS | CONFIG |

APEX DICOM Conformance Statement

| | | | | | |
|-----------------------------|-------------|----|---|--------|--------|
| | | | Configuration | | |
| Manfr's Model Name | (0008,1090) | LO | From Configuration | ALWAYS | CONFIG |
| Device S/N | (0018,1000) | LO | From Configuration | ALWAYS | CONFIG |
| S/W Versions | (0018,1020) | LO | From Configuration | ALWAYS | CONFIG |
| SC Equipment Module | | | | | |
| Conversion Type | (0008,0064) | CS | DV | ALWAYS | AUTO |
| SC Device Software Version | (0018,1019) | LO | From Configuration | ALWAYS | CONFIG |
| General Image Module | | | | | |
| Image Number | (0020,0013) | IS | Generated by Apex | ALWAYS | AUTO |
| Patient Orientation | (0020,0020) | CS | L\F | ALWAYS | AUTO |
| Image Comments | (0020,4000) | LT | Note 13 | EMPTY | AUTO |
| Image Pixel Module | | | | | |
| Samples per pixel | (0028,0002) | US | 1 for grayscale, 3 for color images | ALWAYS | AUTO |
| Photometric Interpretation | (0028,0004) | CS | MONOCHROME2 for grayscale, RGB for color images | ALWAYS | AUTO |
| Planar Configuration | (0028,0006) | US | Not included for grayscale, 0 for color images | ANAP | AUTO |
| Rows | (0028,0010) | US | Generated by Apex | ALWAYS | AUTO |
| Columns | (0028,0011) | US | Generated by Apex | ALWAYS | AUTO |
| Pixel Spacing | (0028,0030) | US | Generated by Apex, used only for IVA scans | VNAP | AUTO |
| Bits Allocated | (0028,0100) | US | Note 14 | ALWAYS | AUTO |
| Bits Stored | (0028,0101) | US | Note 14 | ALWAYS | AUTO |
| High Bit | (0028,0102) | US | Note 14 | ALWAYS | AUTO |
| Pixel Representation | (0028,0103) | US | 0 | ALWAYS | AUTO |
| SC Image Module | | | | | |
| Date of Secondary Capture | (0018,1012) | DA | <yyyymmdd>, date of this DICOM file creation | ALWAYS | AUTO |
| Time of Secondary | (0018,1014) | TM | <hhmmss>, time of this DICOM file | ALWAYS | AUTO |

APEX DICOM Conformance Statement

| | | | | | |
|--|-------------|----|--|--------|--------|
| Capture | | | creation | | |
| VOI LUT Module | | | | | |
| Window Center | (0028,1050) | DS | Generated by Apex | ALWAYS | AUTO |
| Window Width | (0028,1051) | DS | Generated by Apex | ALWAYS | AUTO |
| SOP Common Module | | | | | |
| Specific Character Set | (0008,0005) | CS | ISO_IR 192, included only if configured to use Unicode | ANAP | CONFIG |
| SOP Class UID | (0008,0016) | UI | Secondary Capture Image Storage SOP Class UID | ALWAYS | AUTO |
| SOP Instance UID | (0008,0018) | UI | Generated by Apex | ALWAYS | AUTO |
| X-Ray Acquisition Module | | | | | |
| Image Dose Area Product | (0018,115E) | DS | Note 16 | ANAP | AUTO |
| Image Pixel Module | | | | | |
| Pixel Data | (7FE0,0010) | OW | Generated by Apex | ALWAYS | AUTO |
| Private Patient Questionnaire Module (Included only in DICOM files containing questionnaire reports) | | | | | |
| Private Creator | (0011,0010) | LO | HOLOGIC | ANAP | AUTO |
| Questionnaire Data | (0011,1000) | OB | Generated by Apex | ANAP | AUTO |
| Private Report Data Module (Included only in DICOM files containing scans) | | | | | |
| Private Creator | (0019,0010) | LO | HOLOGIC | VNAP | AUTO |
| Report Data | (0019,1000) | UT | Generated by Apex | VNAP | AUTO |
| Private Scan Files Data Module (Included only when sent to archive locations) | | | | | |
| Private Creator | (0023,0010) | LO | HOLOGIC | VNAP | AUTO |
| Encoding Scheme | (0023,1000) | LO | 1.0 | VNAP | AUTO |
| P File Name | (0023,1001) | LO | Generated by Apex | VNAP | AUTO |
| P File Data | (0023,1002) | OB | Generated by Apex | VNAP | AUTO |
| P File Length | (0023,1003) | UL | Generated by Apex | VNAP | AUTO |
| R File Data | (0023,1004) | OB | Generated by Apex | VNAP | AUTO |
| R File Length | (0023,1005) | UL | Generated by Apex | VNAP | AUTO |

APEX DICOM Conformance Statement

| Private Graph Data Module (Included only for reports containing graphs) | | | | | |
|---|-------------|----|-------------------|------|------|
| Private Creator | (0029,0010) | LO | HOLOGIC | ANAP | AUTO |
| Graph Bitmap Data | (0029,1000) | OB | Generated by Apex | ANAP | AUTO |
| Graph Bitmap Size | (0029,1001) | UL | Generated by Apex | ANAP | AUTO |

Notes:

1. Values supplied via Modality Worklist will be entered as received. Values supplied via user input will contain 3 components (some possibly empty): last name (maximum 64 characters), first name (maximum 25 characters), and middle name (maximum 8 characters).
2. Value supplied via Modality Worklist will be entered as received. Value supplied via user input is maximum 64 characters and may be blank.
3. Value supplied via Modality Worklist will be entered as received. Value supplied via user input may be blank.
4. Value supplied via Modality Worklist will be entered as received. Value supplied via user input will always be M or F.
5. Value supplied via Modality Worklist will be entered as received. Otherwise the value will be generated by Apex. The administrative user can modify the value via Scan Details screen.
6. Value supplied via Modality Worklist will be entered as received. Value supplied via user input is a single value not divided by components, is maximum 25 characters, and may be blank.
7. Value supplied via Modality Worklist will be entered as received. For non-Worklist studies, the system may be configured to generate the value automatically, using format SSSSSYYMMDDNNN, where SSSSS is the Apex serial number, YYMMDD is the current date, and NNN is the exam index. In either case, the value is editable by the user, accepts maximum 16 characters, and may be blank.
8. Value is supplied via user input, is a single value not divided by components, is maximum 120 characters, and may be blank.
9. Based on the configuration, uses value obtained from MWL or configured by the user.
10. Populated only for paired structures. Values are: R = right, L = left.

APEX DICOM Conformance Statement

11. Body Part Values: LSPINE, HIP, ARM. For scan types not described by these values, the attribute is zero length.
12. Included only if supplied by Modality Worklist and if Requested Procedure ID attribute (0040,1001) is not blank.
13. Formerly contained text incorporating analysis results. Starting from Apex 2.0, private group 0019 is used for this data, and this attribute always has zero length.
14. For Single Energy IVA Images: Bits Allocated = 16, Bits Stored = 12, High Bit = 11; for all other images: Bits Allocated = 8, Bits Stored = 8, High Bit = 7.
15. If mapped to a MWL attribute, the field is always included, with value of the mapped attribute. If not mapped or for non-MWL studies, the field uses value configured by the user, or not included if the user specified blank value.
16. The attribute is present only if all conditions below are met:
 - a. The DAP Meter option is installed
 - b. The system is configured to report DAP
 - c. The scan has a stored DAP value.

**Table 8.1-2.
IOD of Created GSPS SOP Instances for Apex IVA Analysis Results**

| Attribute Name | Tag | VR | Value | Presence of Value | Source |
|-----------------------------|-------------|----|-----------------------|-------------------|---------------|
| Patient Module | | | | | |
| Patient's Name | (0010,0010) | PN | From referenced image | VNAP | MWL/USER |
| Patient ID | (0010,0020) | LO | From referenced image | VNAP | MWL/USER |
| Patient's Birth Date | (0010,0030) | DA | From referenced image | VNAP | MWL/USER |
| Patient's Sex | (0010,0040) | CS | From referenced image | VNAP | MWL/USER |
| General Study Module | | | | | |
| Study Instance UID | (0020,000D) | UI | From referenced image | ALWAYS | MWL/AUTO/USER |
| Study Date | (0008,0020) | DA | From referenced image | ALWAYS | AUTO |
| Study Time | (0008,0030) | TM | From referenced image | ALWAYS | AUTO |
| Referring Physician's | (0008,0090) | PN | From referenced image | VNAP | MWL/USER |

APEX DICOM Conformance Statement

| | | | | | |
|-----------------------------------|-------------|----|---|--------|----------|
| Name | | | | | |
| Study ID | (0020,0010) | SH | From referenced image | VNAP | AUTO |
| Accession Number | (0008,0050) | SH | From referenced image | VNAP | MWL/USER |
| General Series Module | | | | | |
| Series Instance UID | (0020,000E) | UI | Generated by Apex | ALWAYS | AUTO |
| Series Number | (0020,0011) | IS | Generated by Apex | ALWAYS | AUTO |
| Laterality | (0020,0060) | CS | From referenced image | ANAP | AUTO |
| Presentation Series Module | | | | | |
| Modality | (0008,0060) | CS | PR | ALWAYS | CONFIG |
| General Equipment Module | | | | | |
| Manufacturer | (0008,0070) | LO | HOLOGIC | ALWAYS | AUTO |
| S/W Versions | (0018,1020) | LO | From Configuration | ALWAYS | CONFIG |
| Presentation State Module | | | | | |
| Image Number | (0020,0013) | IS | Generated by Apex | ALWAYS | AUTO |
| Presentation Label | (0070,0080) | CS | HOLOGIC | ALWAYS | AUTO |
| Presentation Description | (0070,0081) | LO | Hologic QDR IVA Analysis | ALWAYS | AUTO |
| Presentation Creation Date | (0070,0082) | DA | <yyyymmdd>, date of this GSPS file creation | ALWAYS | AUTO |
| Presentation Creation Time | (0070,0083) | TM | <hhmmss>, time of this GSPS file creation | ALWAYS | AUTO |
| Presentation Creator's Name | (0070,0084) | PN | Zero length | EMPTY | AUTO |
| Referenced Series Sequence | (0008,1115) | SQ | One item | ALWAYS | AUTO |
| >Series Instance UID | (0020,000E) | UI | From referenced image | ALWAYS | AUTO |
| >Referenced Image Sequence | (0008,1140) | SQ | One item | ALWAYS | AUTO |
| >>Referenced SOP Class UID | (0008,1150) | UI | From referenced image | ALWAYS | AUTO |
| >>Referenced SOP Instance UID | (0008,1155) | UI | From referenced image | ALWAYS | AUTO |
| Displayed Area Module | | | | | |
| Displayed Area Selection | (0070,005A) | SQ | One item | ALWAYS | AUTO |

APEX DICOM Conformance Statement

| | | | | | |
|--|-------------|----|---|--------|------|
| Sequence | | | | | |
| >Displayed Area Top Left Hand Corner | (0070,0052) | SL | 0\0 | ALWAYS | AUTO |
| >Displayed Area Bottom Right Hand Corner | (0070,0053) | SL | Referenced Image Width\Height | ALWAYS | AUTO |
| >Presentation Size Mode | (0070,0100) | SL | SCALE TO FIT | ALWAYS | AUTO |
| >Presentation Pixel Aspect Ratio | (0070,0102) | IS | 1\1 | ALWAYS | AUTO |
| Graphic Annotation Module | | | | | |
| Graphic Annotation Sequence | (0070,0001) | SQ | One or more items | ALWAYS | AUTO |
| >Graphic Layer | (0070,0002) | CS | 1 | ALWAYS | AUTO |
| >Text Object Sequence | (0070,0008) | SQ | One or more items if text annotation present | ANAP | AUTO |
| >>Anchor Point Annotation Units | (0070,0004) | CS | PIXEL | ANAP | AUTO |
| >>Unformatted Text Value | (0070,0006) | ST | From user input | ANAP | AUTO |
| >>Bounding Box Top Left Hand Corner | (0070,0010) | FL | From user input | ANAP | AUTO |
| >>Bounding Box Bottom Right Hand Corner | (0070,0011) | FL | From user input | ANAP | AUTO |
| >>Bounding Box Text Horizontal Justification | (0070,0012) | CS | LEFT | ANAP | AUTO |
| >Graphic Object Sequence | (0070,0009) | SQ | One or more items if graphic annotation present | ANAP | AUTO |
| >>Graphic Annotation Units | (0070,0005) | CS | PIXEL | ANAP | AUTO |
| >>Graphic Dimensions | (0070,0020) | US | From user input | ANAP | AUTO |

APEX DICOM Conformance Statement

| | | | | | |
|--------------------------------|-------------|----|--|--------|--------|
| >>Number of Graphic Points | (0070,0021) | US | From user input | ANAP | AUTO |
| >>Graphic Data | (0070,0022) | FL | From user input | ANAP | AUTO |
| >>Graphic Type | (0070,0023) | CS | POLYLINE | ANAP | AUTO |
| >>Graphic Filled | (0070,0024) | CS | N | ANAP | AUTO |
| Graphic Layer Module | | | | | |
| Graphic Layer Sequence | (0070,0060) | SQ | One item | ALWAYS | AUTO |
| >Graphic Layer | (0070,0002) | CS | 1 | ALWAYS | AUTO |
| >Graphic Layer Order | (0070,0062) | IS | 1 | ALWAYS | AUTO |
| Presentation LUT Module | | | | | |
| Presentation LUT Shape | (2050,0020) | CS | IDENTITY | ALWAYS | AUTO |
| SOP Common Module | | | | | |
| Specific Character Set | (0008,0005) | CS | ISO_IR 192, included only if configured to use Unicode | ANAP | CONFIG |
| SOP Class UID | (0008,0016) | UI | GSPS SOP Class UID | ALWAYS | AUTO |
| SOP Instance UID | (0008,0018) | UI | Generated by Apex | ALWAYS | AUTO |

**Table 8.1-3.
IOD of Created SC SOP Instances for Apex IVA Results Images**

| Attribute Name | Tag | VR | Value | Presence of Value | Source |
|-----------------------------|-------------|-----------|------------------------|--------------------------|---------------|
| Patient Module | | | | | |
| Patient's Name | (0010,0010) | PN | From source scan image | VNAP | MWL/USER |
| Patient ID | (0010,0020) | LO | From source scan image | VNAP | MWL/USER |
| Patient's Birth Date | (0010,0030) | DA | From source scan image | VNAP | MWL/USER |
| Patient's Sex | (0010,0040) | CS | From source scan image | VNAP | MWL/USER |
| General Study Module | | | | | |
| Study Instance UID | (0020,000D) | UI | From source scan image | ALWAYS | MWL/AUTO/USER |
| Study Date | (0008,0020) | DA | From source scan image | ALWAYS | AUTO |
| Study Time | (0008,0030) | TM | From source scan image | ALWAYS | AUTO |

APEX DICOM Conformance Statement

| | | | | | |
|---------------------------------|-------------|----|------------------------|--------|----------|
| Referring Physician's Name | (0008,0090) | PN | From source scan image | VNAP | MWL/USER |
| Study ID | (0020,0010) | SH | From source scan image | VNAP | AUTO |
| Accession Number | (0008,0050) | SH | From source scan image | VNAP | MWL/USER |
| General Series Module | | | | | |
| Modality | (0008,0060) | CS | From source scan image | ALWAYS | CONFIG |
| Series Instance UID | (0020,000E) | UI | From source scan image | ALWAYS | AUTO |
| Series Number | (0020,0011) | IS | Generated by Apex | ALWAYS | AUTO |
| General Equipment Module | | | | | |
| Manufacturer | (0008,0070) | LO | HOLOGIC | ALWAYS | AUTO |
| Institution Name | (0008,0080) | LO | From Configuration | ALWAYS | CONFIG |
| Manfr's Model Name | (0008,1090) | LO | From Configuration | ALWAYS | CONFIG |
| Device S/N | (0018,1000) | LO | From Configuration | ALWAYS | CONFIG |
| S/W Versions | (0018,1020) | LO | From Configuration | ALWAYS | CONFIG |
| SC Equipment Module | | | | | |
| Conversion Type | (0008,0064) | CS | DV | ALWAYS | AUTO |
| SC Device Software Version | (0018,1019) | LO | From Configuration | ALWAYS | CONFIG |
| General Image Module | | | | | |
| Image Number | (0020,0013) | IS | Generated by Apex | ALWAYS | AUTO |
| Image Pixel Module | | | | | |
| Samples per pixel | (0028,0002) | US | 1 | ALWAYS | AUTO |
| Photometric Interpretation | (0028,0004) | CS | MONOCHROME2 | ALWAYS | AUTO |
| Rows | (0028,0010) | US | Generated by Apex | ALWAYS | AUTO |
| Columns | (0028,0011) | US | Generated by Apex | ALWAYS | AUTO |
| Bits Allocated | (0028,0100) | US | 8 | ALWAYS | AUTO |
| Bits Stored | (0028,0101) | US | 8 | ALWAYS | AUTO |
| High Bit | (0028,0102) | US | 7 | ALWAYS | AUTO |
| Pixel Representation | (0028,0103) | US | 0 | ALWAYS | AUTO |
| SC Image Module | | | | | |
| Date of | (0018,1012) | DA | <yyyymmdd> | ALWAYS | AUTO |

APEX DICOM Conformance Statement

| | | | | | |
|-----------------------------|-------------|----|--|--------|--------|
| Secondary Capture | | | date of this DICOM file creation | | |
| Time of Secondary Capture | (0018,1014) | TM | <hhmmss>, time of this DICOM file creation | ALWAYS | AUTO |
| SOP Common Module | | | | | |
| Specific Character Set | (0008,0005) | CS | ISO_IR 192, included only if configured to use Unicode | ANAP | CONFIG |
| SOP Class UID | (0008,0016) | UI | Secondary Capture Image Storage SOP Class UID | ALWAYS | AUTO |
| SOP Instance UID | (0008,0018) | UI | Generated by Apex | ALWAYS | AUTO |
| Image Pixel Module | | | | | |
| Pixel Data | (7FE0,0010) | OW | Generated by Apex | ALWAYS | AUTO |
| Private Flags Module | | | | | |
| Private Creator | (0013,0010) | LO | HOLOGIC | ALWAYS | AUTO |
| IVA Results Flag | (0013,1000) | LO | IVA Results | ALWAYS | AUTO |

8.1.2. Usage of Attributes from Received IODs

**Table 8.1-4.
Used Attributes in Received IODs**

| Attribute Name | Tag | VR |
|---------------------------|-------------|----|
| Manufacturer | (0008,0070) | LO |
| Study Instance UID | (0020,000D) | UI |
| Series Instance UID | (0020,000E) | UI |
| Date of Secondary Capture | (0018,1012) | DA |
| Time of Secondary Capture | (0018,1014) | TM |
| P File Name | (0023,1001) | LO |
| P File Data | (0023,1002) | OB |
| P File Length | (0023,1003) | UL |
| R File Data | (0023,1004) | OB |
| R File Length | (0023,1005) | UL |

8.1.3. Attribute Mapping

APEX DICOM Conformance Statement

The relationships between attributes received via Modality Worklist, stored in acquired images and communicated via MPPS are summarized in the table below. The format and conventions used in the table are the same as the corresponding table in DICOM Part 4, Annex M.6.

**Table 8.1-5.
Attribute Mapping between Modality Worklist, Image, and MPPS**

| Modality Worklist | Image IOD | MPPS IOD |
|--------------------------------------|--|--|
| Patient Name* | Patient Name | Patient Name |
| Patient ID* | Patient ID | Patient ID |
| Patient DOB* | Patient DOB | Patient DOB |
| Patient Sex | Patient Sex | Patient Sex |
| Referring Physician Name* | Referring Physician Name | |
| | | Scheduled Step Attribute Sequence |
| Study Instance UID | Study Instance UID | >Study Instance UID |
| Referenced Study Sequence | | > Referenced Study Sequence |
| Accession Number | Accession Number | >Accession Number |
| Placer Order Number | | > Placer Order Number |
| Filler Order Number | | > Filler Order Number |
| | Request Attribute Sequence | |
| Requested Procedure ID | > Requested Procedure ID | > Requested Procedure ID |
| Requested Procedure Description | | > Requested Procedure Description |
| Scheduled Procedure Step ID | > Scheduled Procedure Step ID | > Scheduled Procedure Step ID |
| Scheduled Procedure Step Description | > Scheduled Procedure Step Description | > Scheduled Procedure Step Description |
| Scheduled Protocol Code Sequence | | > Scheduled Protocol Code Sequence |
| Scheduled Station AE Title | AE Title | Performed Station AE Title |
| | Study Date | Performed Procedure Step Start Date |
| | Study Time | Performed Procedure Step Start Time |
| Scheduled Procedure Step ID* | Procedure Code | Performed Procedure Step ID |
| Modality | Modality | Modality |
| Other Patient Ids | Other Patient Ids | |
| Study Description* | Study Description | |

APEX DICOM Conformance Statement

* This Apex field may be mapped to a different Worklist attribute or not mapped at all. In this case value of that attribute will be used, or the value will no be used at all.

8.1.4. Coerced/Modified Fields

**Table 8.1-6.
Attributes that may be coerced**

| Attribute | Coercion Condition |
|-----------------------|---|
| Patient Name | <ol style="list-style-type: none"> 1. User action 2. Automatic truncation if obtained from Worklist and exceeds length used by Apex: First name – 25 characters, and middle name – 8 characters |
| Patient ID | User action |
| Patient Ethnicity | User action |
| Patient Date of Birth | User action |
| Patient Sex | User action |
| Referring Physician | <ol style="list-style-type: none"> 1. User action 2. Automatic truncation if obtained from Worklist and exceeds length used by Apex: 25 characters combined for all components |
| Accession Number | User action |
| Study Instance UID | User action |

8.2. Data Dictionary of Private Attributes

**Table 8.2-1.
Dictionary of Private Attributes used by Apex**

| Tag | Attribute Name | VR | VM |
|--|--------------------|----|----|
| Private Patient Questionnaire Group | | | |
| (0011,0010) | Private Creator | LO | 1 |
| (0011,1000) | Questionnaire Data | OB | 1 |
| Private Report Data Group | | | |
| (0019,0010) | Private Creator | LO | 1 |
| (0019,1000) | Report Data | UT | 1 |
| Private Scan Files Data Group | | | |
| (0023,0010) | Private Creator | LO | 1 |
| (0023,1000) | Encoding Scheme | LO | 1 |
| (0023,1001) | P File Name | LO | 1 |
| (0023,1002) | P File Data | OB | 1 |
| (0023,1003) | P File Length | UL | 1 |
| (0023,1004) | R File Data | OB | 1 |

APEX DICOM Conformance Statement

| | | | |
|---------------------------------|-------------------|----|---|
| (0023,1005) | R File Length | UL | 1 |
| Private Graph Data Group | | | |
| (0029,0010) | Private Creator | LO | 1 |
| (0029,1000) | Graph Bitmap Data | OB | 1 |
| (0029,1001) | Graph Bitmap Size | UL | 1 |
| Private Flags Group | | | |
| (0013,0010) | Private Creator | LO | 1 |
| (0013,1000) | IVA Results Flag | LO | 1 |

8.3. Coded Terminology and Templates

The Apex AE is capable of supporting arbitrary coding schemes. The contents of Code Sequences supplied in Worklist Items can be mapped to Image IOD and MPDS attributes.

8.4. Grayscale Image Consistency

Apex images are displayed by monitor attached to the device. There are no special technical requirements for monitors used by Apex.

8.5. Standard Extended / Specialized Private SOP Classes

No Specialized or Private SOP Classes are supported.

8.6. Private Transfer Syntaxes

No Private Transfer Syntaxes are supported.