


Artwork consists of twenty three (23) 8½ x 11 inch pages.

REV AUTHORED BY P KUPOVICH	DATE 9/17/04	HOLOGIC ® A FAMILY OF COMPANIES	Osteoporosis Assessment LORAD® Breast Cancer Detection DirectRay® Digital Imaging FLUOROSCAN® C-arm Imaging	 SIGNATURES ON FILE
REV DRAFTED BY G CORRIDORI	DATE 9/17/04			
PROPRIETARY: This document contains proprietary data of Hologic, Inc. No disclosure, reproduction or use of any part thereof may be made except by written permission from Hologic.		TITLE	DOCUMENT NUMBER	REV
		FLUOROSCAN DICOM CONFORMANCE STATEMENT	AW-00237	002
REV. RELEASE DATE:	11/8/04	ARTWORK	SIZE A	SHEET 1 OF 1

Fluoroscans Imaging Systems Incorporated

Premier DICOM Conformance Statement

Revision History

Revision	Date	Author	Reason For Change
A	3 September, 1999	J. Niazy	Initial Release
B	27 October, 1999	J. Niazy	Changed Modality from "OT" to "RF"
C	15 February, 2000	J. Niazy	<ol style="list-style-type: none"> 1. Fixed Typographical error in Table 2 for Abstract Syntax UID 2. Changed Modality from "RF" to "OT"
D	27 October, 2000	J. Niazy	<ol style="list-style-type: none"> 1. Fixed Typographical error for the series Tag 2. Changed Modality from "OT" to "RF" 3. Removed Aspect Ratio 4. Changed operating system from CE to NT
001	23 July, 2003	S. Lee	Changed Entity Module Definitions table "Image Pixel" module, "Rows" attribute from 556 to 534.

002	24 August, 2004	P. Kupovich	<ol style="list-style-type: none">1. Added sections for DICOM Print, Modality Worklist, and Modality Performed Procedure Step.2. Added attributes Window Center and Window Width for Image Storage.
-----	-----------------	----------------	--

Table Of Contents

1. INTRODUCTION.....	6
1.1 PURPOSE OF THIS DOCUMENT	6
1.2 REFERENCES FOR THIS DOCUMENT	6
2 IMPLEMENTATION MODEL.....	7
2.1 APPLICATION DATA FLOW DIAGRAM	7
2.2 FUNCTIONAL DEFINITION OF AEs	8
2.2.1. Storage	8
2.2.2. Print.....	8
2.2.3. Modality Worklist.....	8
2.2.1 Modality Performed Procedure Step	8
2.3 SEQUENCING OF REAL-WORLD ACTIVITIES	8
2.3.1 Image Store	8
2.3.2 Image Print.....	8
2.3.3 Modality Worklist.....	9
2.3.4 Modality Performed Procedure Step	9
3 AE SPECIFICATIONS.....	9
3.1 ASSOCIATION ESTABLISHMENT POLICIES	10
3.1.1 General.....	10
3.1.2 Number of Associations.....	10
3.1.3 Asynchronous Nature.....	10
3.1.4 Implementation Identifying Information.....	10
3.2 ASSOCIATION INITIATION BY REAL WORLD ACTIVITY	10
3.2.1 Real-World Activity – Image Storage.....	10
3.2.1.1 Associated Real-World Activity – Copy Image Command	10
3.2.1.2 Proposed Presentation Contexts.....	10
3.2.1.3 SOP Specific Conformance	11
3.2.2 Real-World Activity – Image Print	13
3.2.2.1 Associated Real-World Activity – Copy Image Command	13
3.2.2.2 Proposed Presentation Contexts.....	13
3.2.2.3 SOP Specific Conformance	13
3.2.3 Real-World Activity – Modality Worklist	17
3.2.3.1 Associated Real-World Activity – Query Worklist	17
3.2.3.2 Proposed Presentation Contexts.....	17
3.2.3.3 SOP Specific Conformance	17
3.2.4 Real-World Activity – Modality Performed Procedure Step	19
3.2.4.1 Associated Real-World Activity.....	19
3.2.4.2 Proposed Presentation Context.....	19
3.2.4.3 SOP Specific Conformance	19
3.3 ASSOCIATION ACCEPTANCE POLICY	20
4 COMMUNICATION PROFILES	20
4.1 SUPPORTED COMMUNICATION STACKS.....	20
4.2 TCP/IP STACK.....	20
4.2.1 Physical Media Support	20
5 EXTENSIONS / SPECIALIZATIONS / PRIVATIZATIONS	20

6	CONFIGURATION	20
6.1	NETWORK PARAMETERS	21
6.2	IMAGE STORE PARAMETERS	21
6.3	PRINT MANAGEMENT PARAMETERS	21
6.3.1	Number of copies	21
6.3.2	Medium Type.....	21
6.3.3	Image Display Format.....	21
6.3.4	Film Size	21
6.4	MODALITY WORKLIST AND PERFORMED PROCEDURE STEP	22
6.4.1	Query Parameters	22
6.4.2	Automatic Query Parameters	22
6.4.3	Query Retry Parameters	22
6.4.4	Attribute Mapping.....	22
7	SUPPORT OF EXTENDED CHARACTER SETS	22

1. Introduction

1.1 Purpose of this Document

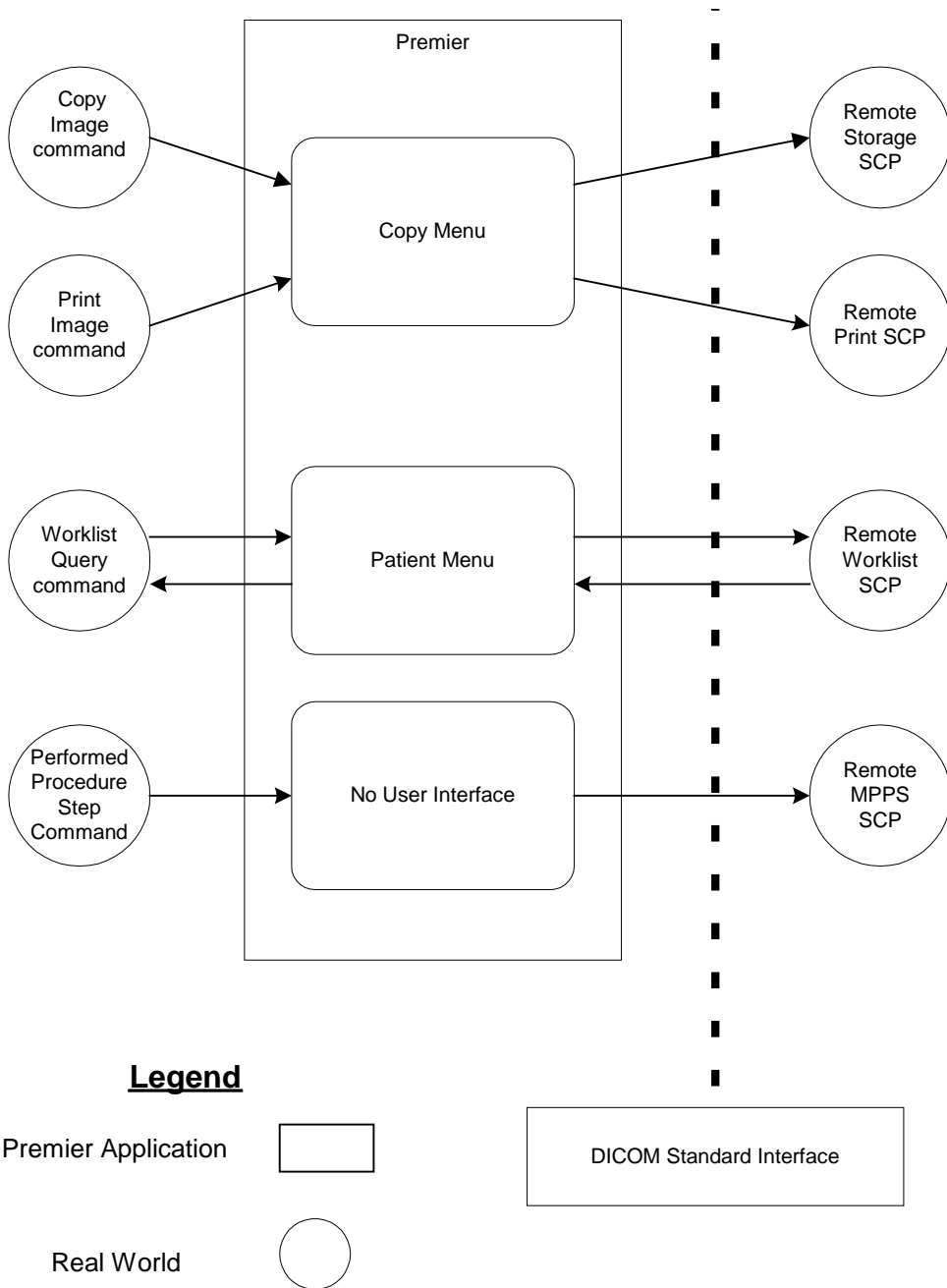
This document is a DICOM conformance statement for the Fluorscan Imaging Systems Premier mini C-arm fluoroscopic x-ray system. It is the intent of this document to provide the reader with all of the necessary information of how to integrate this product with DICOM compliant equipment.

1.2 References for this Document

- American College of Radiology-National Electrical Manufacturers Association (ACR-NEMA) Digital Imaging and Communications in Medicine (DICOM) v3.0-2000.

2 Implementation Model

2.1 Application Data Flow Diagram



There are four real-world DICOM activities that occur in the Premier application: Storage, Print, Modality Worklist, and Modality Performed Procedure Step. The Application Data Flow Diagram graphically depicts the relationship of Premier Application Entity to real-world activities.

2.2 Functional Definition of AEs

2.2.1. Storage

Premier is a SCU for the DICOM Secondary Capture Image Storage Service. The application allows the user to transfer previously stored local images for storage from Premier to a remote Storage Service Class Provider.

2.2.2. Print

Premier is a SCU for Print Management Service. The application allows the user to transfer previously stored local images for printing from Premier to a remote Print Management Service Class Provider.

2.2.3. Modality Worklist

Premier is a SCU for Modality Worklist Service. The application allows the user to query a Modality Worklist Service Class provider to obtain a list of scheduled procedures.

2.2.1 Modality Performed Procedure Step

Premier is a SCU for Modality Performed Procedure Step. The application reports about performed procedures to a Modality Performed Procedure Step Service Class Provider when the user saves acquired images.

2.3 Sequencing of Real-World Activities

2.3.1 Image Store

- The user requests to transfer an image from the local storage to a remote storage SCP.
- The user selects the image to be transferred and initiates the process.
- Premier AE initiates a DICOM association with the selected remote SCP.
- Premier AE formats and sends the image using the C-STORE command.
- Premier AE closes the association with SCP.

2.3.2 Image Print

- The user requests to transfer an image from the local storage to a remote Print SCP.
- The user selects the image to be transferred and initiates the process.

- Premier AE initiates a DICOM association with the selected remote SCP.
- Premier AE requests Remote Printer status using N_GET command of Printer SOP class.
- Premier AE creates instance of Basic Film Session SOP class using N-CREATE command.
- Premier AE calculates number of films dividing total number of selected images for number of images per film, and creates corresponding number of instances of Basic Film Box SOP class using N_CREATE command.
- For each film box, Premier AE creates set of instances of Basic Grayscale Image Box SOP class, one for each image, using N-CREATE command.
- Premier AE prints images using N-ACTION command on each film box. Film boxes are printed one at a time. I.e. Premier AE creates one film box, and prints it. Than it creates and prints the second one and so on.
- Premier AE closes the association with SCP.

2.3.3 Modality Worklist

- The user requests to query a remote Worklist SCP for a list of scheduled procedures, according to specified query parameters.
- Premier AE initiates a DICOM association with the selected remote SCP.
- Premier AE queries for the scheduled procedures using C-FIND command.
- Premier AE stores the obtained data locally.
- Premier AE closes the association with SCP.

2.3.4 Modality Performed Procedure Step

- The user acquires images and saves them locally.
- If the procedure was obtained using Modality Worklist, Premier AE initiates a DICOM association with remote SCP.
- Premier AE reports about performed procedures using N-CREATE and N-SET commands.
- Premier AE closes the association with SCP.
- If the network connection is not available at this time, Premier AE stores the information about performed procedures locally and sends it when the network connection becomes available.

3 AE Specifications

Premier Application Entity provides standard conformance to the following DICOM v3.0 SOP classes as an SCU:

SOP Class Name	SOP Class UID
Secondary Capture Image Storage	1.2.840.10008.5.1.4.1.1.7
Basic Grayscale Print Management Meta SOP Class	1.2.840.10008.5.1.1.9
Modality Worklist Information Model - FIND	1.2.840.10008.5.1.4.31
Modality Performed Procedure Step	1.2.840.10008.3.1.2.3.3

3.1 Association Establishment Policies

3.1.1 General

The maximum PDU length for Storage Service is 16384 bytes.
 The maximum PDU length for all other Services is 28672 bytes.
 The SOP Class Extended Negotiation is not supported.

3.1.2 Number of Associations

Premier initiates only one association at a time.

3.1.3 Asynchronous Nature

Premier does not support asynchronous operations with any associations.

3.1.4 Implementation Identifying Information

Premier provides an implementation class UID of 1.2.840.113830.

3.2 Association Initiation by Real World Activity

Premier initiates new associations for four real-world activities: Image Storage request, Image Print request, Worklist query, and Performed Procedure Step reporting.

3.2.1 Real-World Activity – Image Storage

3.2.1.1 Associated Real-World Activity – Copy Image Command

The user will request that an image be transferred to a remote SCP.

3.2.1.2 Proposed Presentation Contexts

Presentation Context Table					
Abstract Syntax		Transfer Syntax		Role	Extended Negotiation
Name	UID	Name List	UID List		
Secondary Capture Image Storage	1.2.840.10008.5.1.4.1.1.7	DICOM Implicit VR Little Endian	1.2.840.10008.1.2	SCU	None

3.2.1.3 SOP Specific Conformance

Module	Attribute	Type	Value	Tag	VR
Patient	Patient's Name	2	User defined patient ID mode first and last name fields	0010,0010	PN
	Patient ID	2	User defined patient ID mode ID field	0010,0020	LO
	Patient's Birth Date	2		0010,0030	DA
	Patient's Sex	2		0010,0040	CS
General Study	Study Instance UID	1	Note 1	0020,000D	UI
	Study Date	2	The date of the study	0008,0020	DA
	Study Time	2	The time of the study	0008,0030	TM
	Referring Physician's Name	2	User defined patient ID mode doctor field	0008,0090	PN
	Accession Number	2		0008,0050	SH
General Series	Modality	1	"RF"	0008,0060	CS
	Series Instance UID	1	Note 2	0020,000E	UI
	Series Number	2		0020,0011	IS
General Equipment	Manufacturer	2	"Fluoroscans Imaging Systems"	0008,0070	LO
SC Equipment	Conversion Type	1	"DV"	0008,0064	CS
General Image	Image Number	2	"1"	0020,0013	IS
Image Pixel	Samples per pixel	1	1	0028,0002	US

	Photometric Interpretation	1	"MONOCHROME2"	0028,0004	CS
	Rows	1	534	0028,0010	US
	Columns	1	556	0028,0011	US
	Bits Allocated	1	8	0028,0100	US
	Bits Stored	1	8	0028,0101	US
	High Bit	1	7	0028,0102	US
	Pixel Representation	1	0000H	0028,0103	US
	Windows Center	1	Note 5	0028,1050	DS
	Windows Width	1	Note 5	0028,1051	DS
	Pixel Data	1	Pixels which comprise the image	7FE0,0010	OB
SOP Common	SOP Class UID	1	Note 3	0008,0016	UI
	SOP Instance UID	1	Note 4	0008,0018	UI

Note 1 – The Study Instance UID consists of the <org root> followed by .nnnnnnnn.yyyyyyyy.sss where:

nnnnnnnn is the Premier serial number
 yyyyyyyy.sss is a Fluoroscan generated sequence number

Example: 1.2.840.113830.4069903.19990610.1

Note 2 – The Series Instance UID consists of the study instance UID with the number "1" appended.

Example: 1.2.840.113830.4069903.19990610.1.1

Note 3 - SOP Class UID for Secondary Image Storage Service Class is 1.2.840.10008.5.1.4.1.1.7

Note 4 – The SOP Instance UID consists of the Series Instance UID followed by the Study time.

Example: 1.2.840.113830.4069903.19990610.1.1.145532

Note 5 – Calculated using correction factors specified in the configuration file

3.2.2 Real-World Activity – Image Print

3.2.2.1 Associated Real-World Activity – Copy Image Command

The user will request that an image be printed on a remote DICOM printer.

3.2.2.2 Proposed Presentation Contexts

Premier supports the following presentation contexts.

Presentation Context Table					
Abstract Syntax		Transfer Syntax		Role	Extended Negotiation
Name	UID	Name List	UID List		
Basic Grayscale Print Management Meta SOP Class	1.2.840.10008.5.1.1.9	Implicit VR Little Endian	1.2.840.10008.1.2	SCU	None
		Explicit VR Little Endian	1.2.840.10008.1.2.1		
		Explicit VR Big Endian	1.2.840.10008.1.2.2		

3.2.2.3 SOP Specific Conformance

The Basic Grayscale Print Management Meta SOP Class is defined by the following set of supported SOP classes.

SOP Class Name	SOP Class UID
Basic Film Session SOP Class	1.2.840.10008.5.1.1.1
Basic Film Box SOP Class	1.2.840.10008.5.1.1.2
Basic Grayscale Image Box SOP Class	1.2.840.10008.5.1.1.4
Printer SOP Class	1.2.840.10008.5.1.1.16

3.2.2.3.1 Basic Film Session SOP Class

3.2.2.3.1.1 Supported DIMSE commands

For Basic Film Session SOP Class, Premier supports N-CREATE command.

3.2.2.3.1.2 Supported attributes

Attribute Name	Tag	Attribute Description
Number of Copies	2000,0010	Number of copies to be printed for each film of the film session. User configurable.
Print Priority	2000,0020	Medium ("MED")
Medium Type	2000,0030	Medium type. User configurable.

3.2.2.3.1.3 Status Codes

Service Status	Status Code	Meaning	Application Behavior
Success	0x0000	Film session successfully created	Continue
Warning	0xB600	Memory allocation is not supported	Write error log and continue
	0xB605	Requested Min or Max Density out of range	
	0x0116	Attribute Value Out of Range	
	0x0107	Attribute List Error	
All other status codes		Warning or Failure	Stop and report an error.

3.2.2.3.2 Basic Film Box SOP Class

3.2.2.3.2.1 Supported DIMSE Commands

For Basic Film Box SOP Class, Premier supports:
 N-CREATE command,
 N-ACTION command.

3.2.2.3.2.2 Supported Attributes

Attribute Name	Tag	Attribute Description
Image Display Format	2010,0010	STANDARD\C,R. C and R are user configurable.
Film Orientation	2010,0040	PORTRAIT
Film Size ID	2010,0050	User configurable

3.2.2.3.2.3 Status Codes

Service	Status	Meaning	Application Behavior
---------	--------	---------	----------------------

Status	Code		
Success	0x0000	Film box successfully created	Continue
Warning	0xB600	Memory allocation is not supported	Write error log and continue
	0xB605	Requested Min or Max Density out of range	
	0x0116	Attribute Value Out of Range	
	0x0107	Attribute List Error	
All other status codes		Warning or Failure	Stop and report an error.

3.2.2.3.3 Basic Grayscale Image Box SOP Class

3.2.2.3.3.1 Supported DIMSE Commands

For Basic Grayscale Image Box SOP Class, Premier supports N-SET command.

3.2.2.3.3.2 Supported attributes

Attribute Name	Tag	Attribute Description
Image Position	2020,0010	The position of the image on the film
Requested Image Size	2020,0030	Used to prevent the image from being magnified.
Requested Decimate/Crop Behavior	2020,0040	DECIMATE
Basic Grayscale Image Sequence	2020,0110	A sequence which provides the content of the image pixel data to be printed.
>Samples Per Pixel	0028,0002	1
>Photometric Interpretation	0028,0004	MONOCHROME2
>Rows	0028,0010	Number of pixel rows
>Columns	0028,0011	Number of pixel columns
>Pixel Aspect Ratio	0028,0034	1/1
>Bits Allocated	0028,0100	8
>Bits Stored	0028,0101	8
>High Bit	0028,0102	7
>Pixel Representation	0028,0103	0
>Pixel Data	7FE0,0010	Actual image pixels

3.2.2.3.3.3 Status Codes

Service Status	Status Code	Meaning	Application Behavior
Success	0000	Image successfully stored in Image	Continue

		Box	
Warning	0xB600	Memory allocation is not supported	Write error log and continue
	0xB605	Requested Min or Max Density out of range	
	0xB609	Image Cropped To Fit	
	0xB60A	Image Decimated To Fit	
	0x0116	Attribute Value Out of Range	
	0x0107	Attribute List Error	
All other status codes		Warning or Failure	Stop and report an error.

3.2.2.3.4 Printer SOP Class

3.2.2.3.4.1 Supported DIMSE Commands

For Printer SOP Class, Premier supports N-GET command.

3.2.2.3.4.2 Supported Attributes

Attribute Name	Tag	Attribute Description
Printer Status	2110,0010	Printer status returned by the Printer. NORMAL, WARNING, or FAILURE.
Printer Status Info	2110,0020	Info about the problem in case of warning or failure.

In case of Printer Status NORMAL, Premier will continue the printing flow.

In case of Printer Status WARNING, Premier will write a log record about the problem and continue the flow.

In case of Printer Status FAILURE, Premier will write a log record about the problem and stop the printing flow.

3.2.2.3.4.3 Status Codes

Service Status	Status Code	Meaning	Application Behavior
Success	0x0000	Film box successfully created	Continue
Warning	0x0001	Optional attribute is not supported	Write error log and continue
	0x0107	Attribute List Error	
All other status codes		Warning or Failure	Stop and report an error.

3.2.3 Real-World Activity – Modality Worklist

3.2.3.1 Associated Real-World Activity – Query Worklist

The Modality Worklist query may start in three different ways:

- Upon the User’s request;
- According to the scheduled time;
- As a retry after the previous one has failed.

3.2.3.2 Proposed Presentation Contexts

Premier supports the following presentation contexts.

Presentation Context Table					
Abstract Syntax		Transfer Syntax		Role	Extended Negotiation
Name	UID	Name List	UID List		
Modality Worklist Information Model – FIND SOP Class	1.2.840.10008.5.1.4.31	Implicit VR Little Endian	1.2.840.10008.1.2	SCU	None
		Explicit VR Little Endian	1.2.840.10008.1.2.1		
		Explicit VR Big Endian	1.2.840.10008.1.2.2		

3.2.3.3 SOP Specific Conformance

3.2.3.3.1 Matching Keys

The following attributes are user-configurable and may be used in Modality Worklist query:

Matching Key Attribute	Tag
Scheduled Procedure Step Start Date	0040, 0002
Modality	0008, 0060
Scheduled Station AE Title	0040, 0001

3.2.3.3.2 Return Keys

Premier expects to obtain information from a Worklist SCP about specific fields that may be mapped to specific DICOM attributes.

Premier Field	Mapped DICOM Attribute	Tag
Patient's Name	Patient's Name	0010,0010
	Patient's Birth Name	0010,1005
	Patient's Mother's Birth Name	0010,1060
	Other Patient Names	0010,1001
Patient ID	Other Patient IDs	0010,1000
	Patient's Name	0010,1010
Patient's Date of Birth	Patient's Birth Date	0010,0030
	Patient's Age	0010,1010
Patient's Sex	Patient's Sex	0010,0040
Patient's Ethnicity	Ethnic Group	0010,2160
	Patient's Religious Preference	0010,21F0
Study Description (View)	Accession Number	0008,0050
	Admission ID	0038,0010
	Requested Procedure Code Sequence	0032,1064
	Requested Procedure ID	0040,1001
	Scheduled Action Item Code Sequence	0040,0008
	Scheduled Procedure Step ID	0040,0009
Accession Number	Accession Number	0008,0050
Physician	Referring Physician	0008,0090
	Requesting Physician	0032,1032

3.2.3.3.3 Status Codes

Status	Status Code	Meaning	Premier Behavior
Success	0000	Matching is complete – No final Identifier is supplied	Completes retrieving of matches
Pending	FF00	Matches are continuing – Current Match is supplied and any Optional Keys were supported in the same manner as Required Keys	Receiving of matches continues
Pending (No Optional Key Support)	FF01	Matches are continuing – Warning that one or more Optional Keys were not supported for existence for this Identifier	Receiving of matches continues without any warnings or errors
Other	Other	All other Status Codes	Terminates receiving of matches and logs a failure message.

			The matches received prior to this code are handled normally.
--	--	--	---

3.2.4 Real-World Activity – Modality Performed Procedure Step

3.2.4.1 Associated Real-World Activity

After the user saves images acquired for a procedure obtained using Modality Worklist, Premier will report about performed procedures to remote SCP.

3.2.4.2 Proposed Presentation Contest

Presentation Context Table					
Abstract Syntax		Transfer Syntax		Role	Extended Negotiation
Name	UID	Name List	UID List		
Modality Performed Procedure Step SOP Class	1.2.840.10008.3.1.2.3.3	Implicit VR Little Endian Explicit VR Little Endian Explicit VR Big Endian	1.2.840.10008.1.2 1.2.840.10008.1.2.1 1.2.840.10008.1.2.2	SCU	None

3.2.4.3 SOP Specific Conformance

3.2.4.3.1 Performed Procedure Step In Progress

Premier uses N-CREATE command to report about started procedure. It uses following DICOM attributes.

Attribute Name	Tag
Scheduled Step Attribute Sequence	0040,0270
>Study Instance UID	0020,000D
Performed Procedure Step ID	0040,0253
Performed Station AE Title	0040,0241
Performed Procedure Step Start Date	0040,0244
Performed Procedure Step Start Time	0040,0245
Performed Procedure Step Status (“IN PROGRESS”)	0040,0252
Modality	0008,0060

In order to comply with DICOM requirements, all unused type 2 attributes are also included in a request, with zero length values.

3.2.4.3.2 Performed Procedure Step Completed

Premier uses N-SET command to report about completed procedure. It uses following DICOM attributes.

Attribute Name	Tag
Performed Procedure Step End Date	0040,0250
Performed Procedure Step End Time	0040,0251
Performed Procedure Step Status (“COMPLETED”)	0040,0252

3.2.4.3.3 Performed Procedure Step Discontinued

If the procedure has been discontinued (i.e. no images were saved for the procedure), no reporting will be performed at all.

3.3 Association Acceptance Policy

Premier does not handle incoming associations.

4 Communication Profiles

4.1 Supported Communication Stacks

Premier provides DICOM 3.0 TCP/IP Network Communications Support as defined in part 8 of the DICOM Standard.

4.2 TCP/IP Stack

Premier uses the TCP/IP stack built into the Windows NT operating System.

4.2.1 Physical Media Support

Premier uses Ethernet via twisted pair as the physical medium for TCP/IP.

5 Extensions / Specializations / Privatizations

This section does not apply to Premier.

6 Configuration

All configuration information is stored in the Premier configuration file and may be modified at any time.

6.1 Network Parameters

The following parameters are required and are configurable for each Premier DICOM service:

- Called Application Entity Title
- Called Application Entity Port
- Called Application Entity IP address

6.2 Image Store parameters

The user may configure Calling Application Entity Title.

6.3 Print Management Parameters

There are parameters configurable for each DICOM Printer.

6.3.1 Number of copies

The user may specify desired number of copies from 1 to 99.

6.3.2 Medium Type

The user may select desired medium type using one of predefined formats.

PAPER
CLEAR FILM
BLUE FILM

6.3.3 Image Display Format

The user may select layout of images using one of predefined formats.

STANDARD\1,1
STANDARD\1,2
STANDARD\2,1
STANDARD\2,2
STANDARD\3,4
STANDARD\4,3

6.3.4 Film Size

The user may select film size using one of predefined formats.

8INX10IN
10INX12IN

10INX14IN
11INX14IN
14INX17IN
17IN17IN

6.4 Modality Worklist and Performed Procedure Step

The user may enable or disable Worklist Service or Performed Procedure Step service.

6.4.1 Query Parameters

The user may configure parameters used to build a Worklist query.

Days Back
Days Forward
Modality
Local AE Title
Maximum number of hits per query

6.4.2 Automatic Query Parameters

The user may configure the Worklist service to perform automatic queries. There are three available choices:

- Never - automatic query not performed
- Every Day At - query performed automatically every day at specified time
- Every n Hours – query performed automatically every n hours.

6.4.3 Query Retry Parameters

The user may specify Worklist service behavior in case of query failure.

- Timeout – number of minutes to wait if a SCP is not responding
- Retry Attempts – how many times to retry the query
- Retry Interval – number of minutes between retry attempts.

6.4.4 Attribute Mapping

The user may map Premier fields to specific DICOM attributes. Section 3.2.3.3.2 describes Premier fields and DICOM attributes available for mapping.

7 Support of Extended Character Sets

Extended character sets are not supported.

This page left intentionally blank