

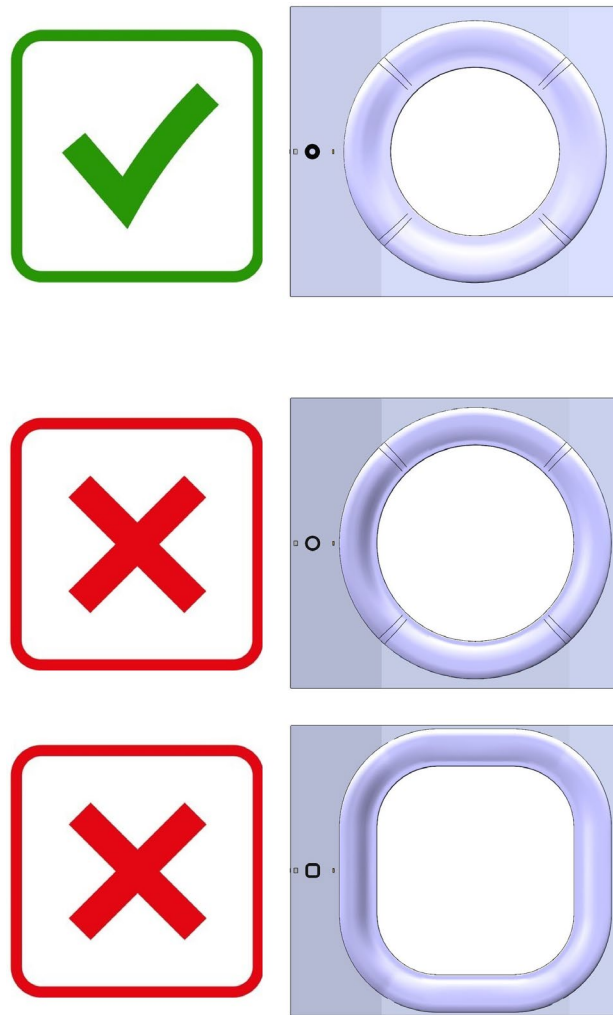
## Introduction

This document provides instructions for using the solid center pad on the Affirm® prone biopsy system.

## Usage Instructions

The solid center pad is **ONLY** intended for use in conjunction with the 9.0-inch diameter table insert.

This pad is **NOT** intended for use with the 10.5-inch diameter table insert or the Arm Thru table insert.



*Figure 1: Table inserts (shown in order from top to bottom) 9.0-inch diameter, 10.5-inch diameter, Arm Thru*