

CTB-00468

Date: January 22, 2018

Author: Service Engineering

Product: Dimensions/3Dimensions **Subsystem:** Clarity HD

Subject: EI Gauge Incorrect for 1x1 Derived DBT Images

Purpose

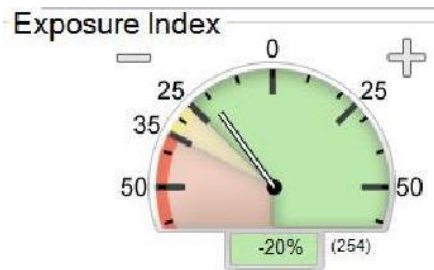
Provide instructions to the customer regarding the use of the Exposure Index (EI) Gauge when in use with Digital Breast Tomosynthesis (DBT) images obtained using Clarity HD. An incorrect value is displayed for all images derived from 1x1 Tomosynthesis binning, i.e. Clarity HD. This may lead the customer to assume that a patient was incorrectly exposed. This will be fixed in a future software release.

Scope

Applicable to Selenia Dimensions systems running software version 1.9.0 and 3Dimensions systems running software versions 2.0.0.

Reason

The purpose of the Exposure Index Gauge is to provide an image quality guide. When the Exposure Index indicates the red or yellow area, the technologist should review the selected image for noise and make a decision about a retake.



The implementation of the algorithm for the EI Gauge may present an incorrect indication when used with any DBT image derived from 1X1 binning.

Technical Bulletin (cont.)

Solution

All modalities that use 2X2 binning will be indicated properly in the gauge. In the case of DBT images derived from 1X1 binning, i.e. Clarity HD, if the Exposure Index is in the yellow or red area the image should be examined for image quality and evaluated solely on its appearance and not based on the indication of the gauge.