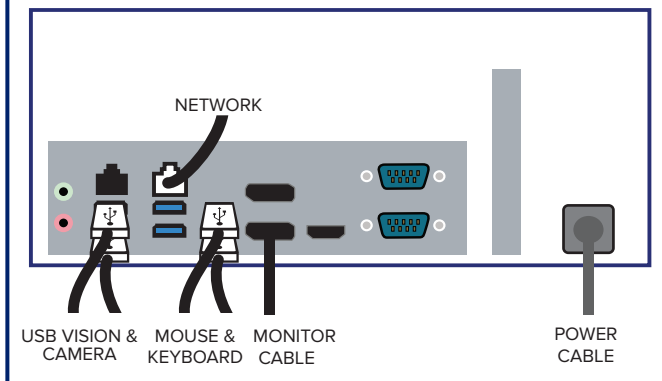


7



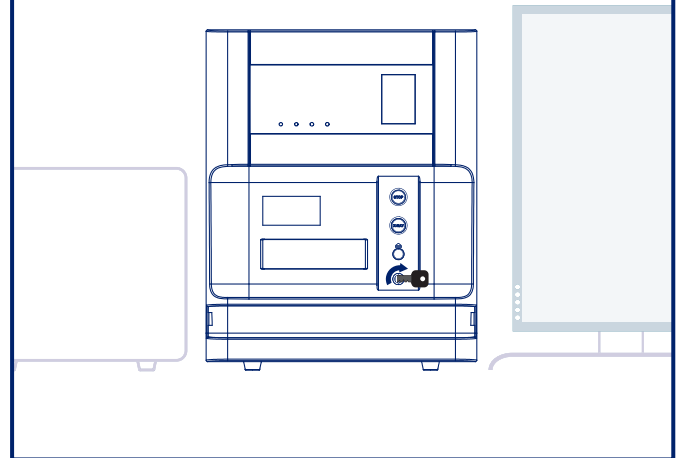
## STEP SEVEN

Connect the Monitor Cable, Network Cable, and Power cord to the back of the computer as shown

Unpack keyboard and mouse and connect to the back of the computer as shown.

Plug the computer, monitor and X-ray unit power cords into a power receptacle.

8



## STEP EIGHT

Locate the **Faxitron Core** key and insert into the Key switch on the front of the unit.

Turn on the computer and monitor and allow Windows to start up.

Turn on the power switch on the back of the **Faxitron Core** unit.

Turn Key clockwise to **ON**.

Double click the **Core** icon.

The system will detect the **Faxitron Core** unit and automatically begin calibration.

For system operation, consult the Quick Start Guide.

*Faxitron Core system also known as CoreVision® System.*



**Hologic, Inc.**  
600 Technology Drive  
Newark, DE 19702 USA  
1.800.477.1856  
www.Hologic.com



**Hologic, BV**  
Da Vincilaan 5  
1930 Zaventem  
Belgium  
Tel: +32 2 711 46 80  
Fax: +32 2 725 20 87



### AU SPONSOR

**Hologic (Australia & New Zealand) Pty Ltd.**  
Level 3, Suite 302  
2 Lyon Park Road  
Macquarie Park NSW 2113  
Australia  
1.800.264.073



[www.hologic.com/package-inserts](http://www.hologic.com/package-inserts)

# Quick Set-up Guide

HOLOGIC®

## Faxitron® Core

Specimen Radiography System



**Faxitron® Core**  
Specimen Radiography System

Automatic

25 kV  
4.5 S

Power   Ready   X-Ray On   Error



**CAUTION**

X-Rays produced when energized.  
Do not insert any part of the body  
when energized - X-Ray hazard.  
LES rayons-x ont produit quand  
stimulé.  
Ne pas faire d'insertion n'importe  
quelle partie du corps quand stimulé  
- le danger d'EVITER



# Faxitron® Core

Specimen Radiography System

## CHECK THE CONTENTS

The **Faxitron Core** system is contained in **1 BOX**:

## CONTENTS

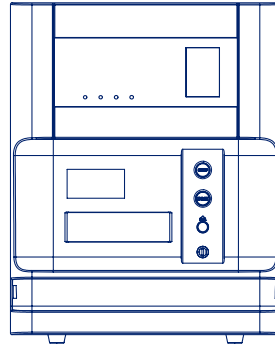
- Faxitron Core** unit
- Faxitron Core** Quick Start Guide
- 1 x System monitor with stand
- 1 x Computer
- 1 x Monitor Cable
- 1 x Keyboard
- 1 x Mouse
- 25 x **Faxitron Core** Specimen Trays
- 2 x Keys
- 2 x USB Vision Cable
- 1 x Network Cable
- 3 x Power Cords

Please check the box arrived with no significant visible damage to any of the items.

If there is damage, please call the **Hologic** support team on:

**+1-800-447-1856**

1



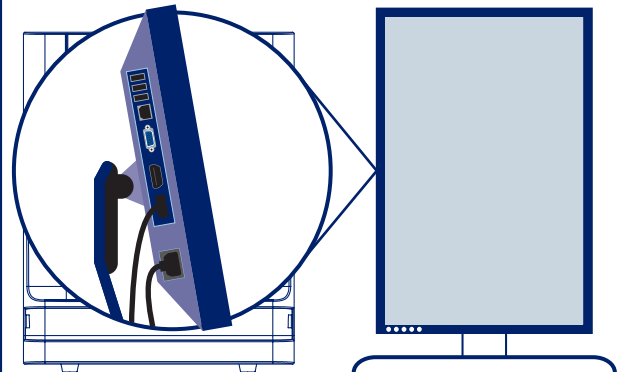
## STEP ONE

Open the **BOX** and remove the top layer of packaging to allow access to lift the **Faxitron Core** out safely.

Please check the **Faxitron Core** for damage (cracked or broken plastics, damaged LCD screen, etc.)

*The system weighs close to 50lbs, please obtain assistance to safely lift the Faxitron Core from the box and place it at the desired location.*

4

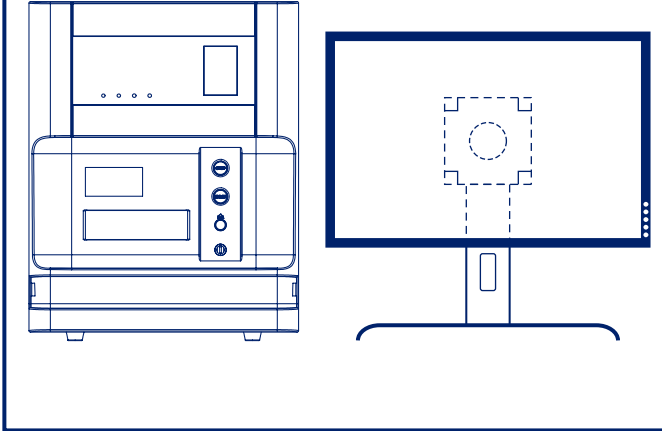


## STEP FOUR

Remove and set aside the document package, specimen trays, keyboard, and mouse. Remove all cords and cables from the box. Remove the computer and place near the **Faxitron Core** unit and monitor.

Connect the Power Cord and Monitor Cable to the monitor. Image shown is an approximation and may vary slightly.

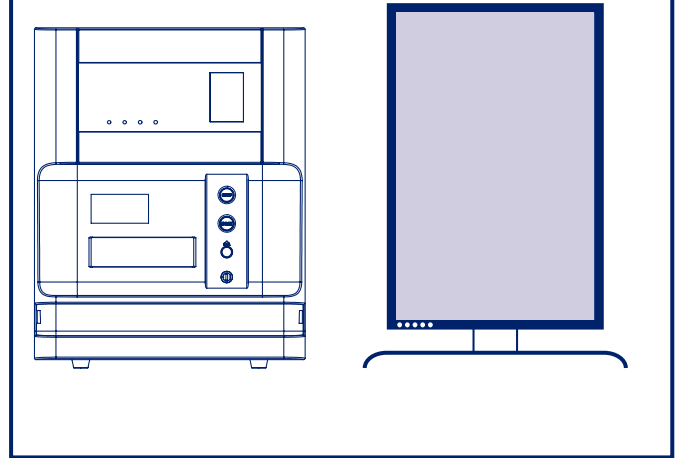
2



## STEP TWO

Remove the monitor and stand. Remove the protective bag from the monitor and set aside.

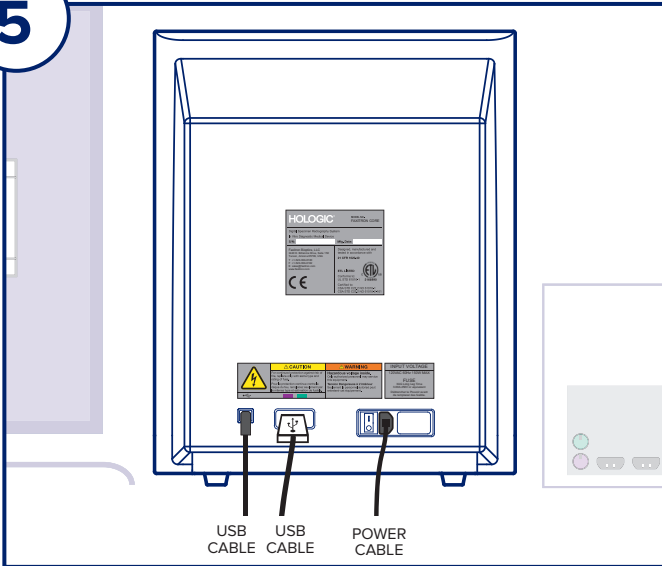
3



## STEP THREE

Rotate the monitor 90° clockwise.  
The buttons will be on the bottom as shown.

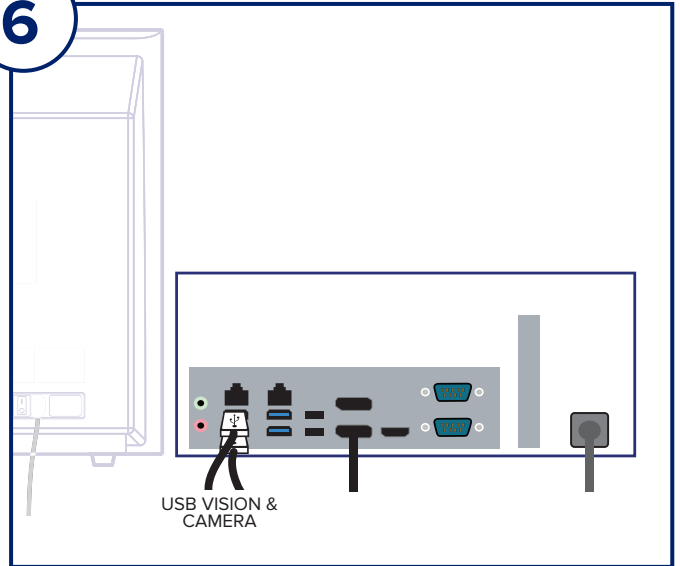
5



## STEP FIVE

Locate USB Cables and Power Cord, and connect to the back of the **Faxitron Core** unit as shown.

6



## STEP SIX

Connect the other ends of the USB Cables to the computer as shown. Be sure to plug the USB Vision Cable into the port labeled **"Vision USB"**.