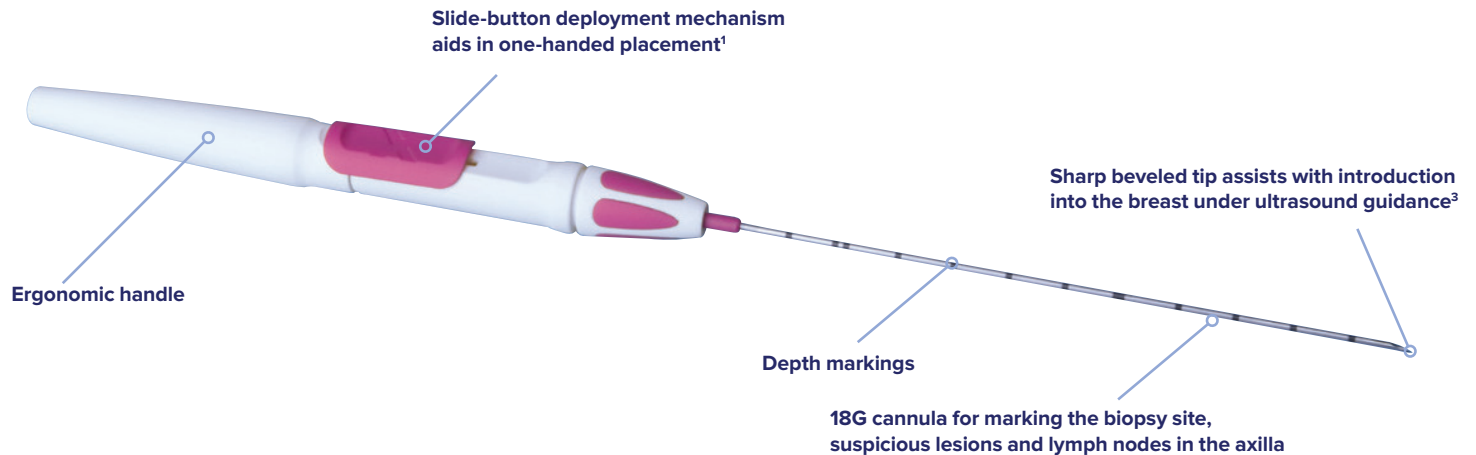


## Tumark<sup>®</sup> Professional X, Q, Vision and Flex for ATEC<sup>®</sup> Biopsy Site Markers

Distributed by Hologic.



### Available shapes



Tumark Professional X



Tumark Vision



Tumark Professional Q



Tumark Flex for ATEC



Tumark Flex for ATEC deploying



Tumark Professional Q deploying



#### Visibility

Tumark Professional X & Q markers are constructed of sand-blasted nitinol, designed to provide visibility in ultrasound.

In 85% of marker placements, physicians stated the ultrasound visibility was good to excellent upon deployment.<sup>2</sup>

Excellent visibility under mammography at deployment.<sup>1</sup>



#### Intelligent design

Intelligent design provides tissue fixation.

Non-resorbing material expands into marker shape upon deployment.

Four distinct and easily identifiable shapes.<sup>1</sup>



#### Single-handed operation

Ergonomic handle for single-handed operation allows for simultaneous operation of the ultrasound transducer with the second hand.

In 99% of procedures completed, physicians agreed the device was easy to use.<sup>1</sup>



#### Accurate deployment

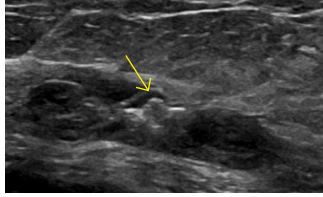
In the initial data collection study:

91% of markers placed did not migrate, as measured on the post procedure mammogram.<sup>1</sup>

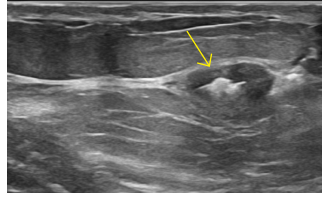
In 9 out of 10 cases, the marker deployed accurately to the intended area.<sup>1</sup>

## Clinical Images

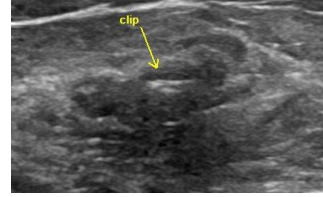
### Tumark under Ultrasound



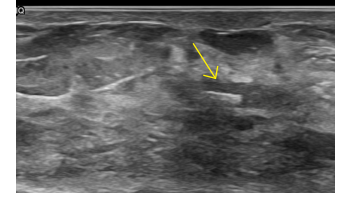
**Vision marker**  
Image courtesy of Dr. Lashonda Soma



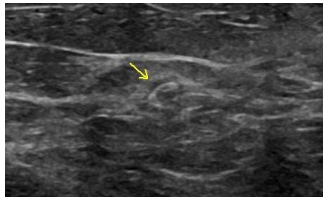
**Vision marker**  
Image courtesy of Dr. Peggy Avagliano



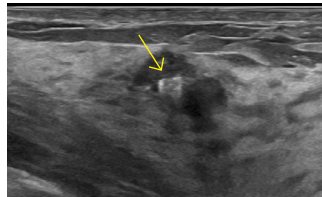
**X marker**  
Image courtesy of Dr. Lashonda Soma



**X marker**  
Image courtesy of Dr. Peggy Avagliano



**Q marker**  
Image courtesy of Dr. Lashonda Soma

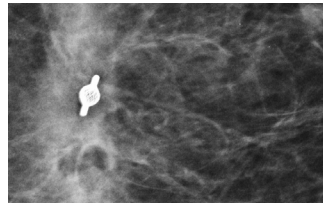


**Q marker**  
Image courtesy of Dr. Peggy Avagliano

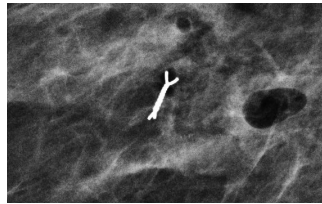
## Technical Specifications

Product Code	Marker Description	Shape	Length	Gauge
351230	Tumark Vision Marker		10 cm	18G
351220	Tumark Professional Q Marker		10 cm	18G
351210	Tumark Professional X Marker		10 cm	18G
351232	Tumark Vision Marker		12 cm	18G
351222	Tumark Professional Q Marker		12 cm	18G
351212	Tumark Professional X Marker		12 cm	18G
351250	Tumark Flex for ATEC Marker		36 cm	12 G
351252	Tumark Flex for ATEC Marker		36 cm	9 G

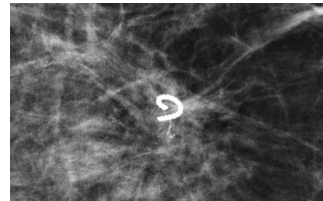
### Tumark under Mammography



**Vision marker**  
Image courtesy of Dr. Lashonda Soma



**X marker**  
Image courtesy of Dr. Lashonda Soma



**Q marker**  
Image courtesy of Dr. Lashonda Soma

[www.hologic.com](http://www.hologic.com) | [info@hologic.com](mailto:info@hologic.com) | +1.800.442.9892

#### References:

1. Based on Tumark<sup>®</sup> Data Collection Study, 3 clinicians at 3 hospitals for 90 marker placements, 2017
2. Based on Tumark<sup>®</sup> Data Collection Study, 3 clinicians at 3 hospitals for 71 marker placements, 2017
3. Based on Tumark<sup>®</sup> Data Collection Study, 3 clinicians at 3 hospitals for 45 marker placements, 2017

SS-00501 Rev. 003 (9/17) © 2017 Hologic Inc. Hologic, ATEC, Celero, Sertera, The Science of Sure and associated logos are trademarks and/or registered trademarks of Hologic, Inc., and/or its subsidiaries in the United States and/or other countries. Tumark and associated logos are trademarks and/or registered trademarks of Somatex Medical Technologies GmbH. Hologic is an authorized distributor of Tumark Professional X, Q, Flex and Vision biopsy site markers. This information is intended for medical professionals in the U.S. and other markets and is not intended as a product solicitation or promotion where such activities are prohibited. Because Hologic materials are distributed through websites, eBroadcasts and tradeshows, it is not always possible to control where such materials appear. For specific information on what products are available for sale in a particular country, please contact your local Hologic representative.