



Eviva Breast Biopsy System A Choice Worth Making



Taking Breast Biopsy to a Higher Standard

The Eviva breast biopsy system was designed with the flagship technology of the Hologic ATEC breast biopsy device, as well as these additional features for optimal use during stereotactic or tomosynthesis biopsy procedures.

Patient Access

- Optimized access to challenging lesions
- Biopsy needle options for most breast sizes

Compassionate Care

- Quiet, remote firing for greater physician-patient interaction
- Saline lavage and constant aspiration to assist in consistent core retrieval, and minimize pain and bleeding

Seamless Integration

- One unified system for biopsy and site marking
- Easily delivers local anesthetic directly to the biopsy site during every cycle without interruption



Eviva Vacuum-Assisted Breast Biopsy Device





Defining the Patient Experience in Stereotactic and Tomosynthesis Breast Biopsy

Because Hologic recognizes the anxiety women have when facing a breast biopsy, we are committed to focusing on a better patient experience with the products we provide. Hologic's Eviva breast biopsy system was designed for optimal use with our best-in-class prone and upright systems, offering optimized access with the MultiCare Platinum and Affirm breast biopsy guidance systems.



The MultiCare Platinum breast biopsy guidance system with the Eviva breast biopsy device



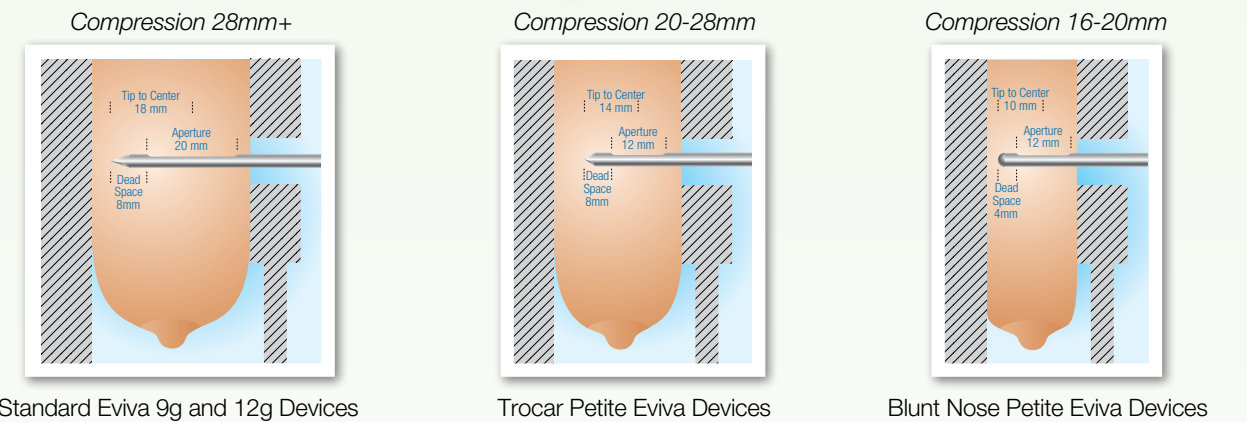
The Affirm breast biopsy guidance system with the Eviva breast biopsy device



The StereoLoc II digital breast biopsy guidance system with the Eviva breast biopsy device

Eviva Breast Biopsy Family of Devices

With its multiple 9g and 12g needle options, the Eviva breast biopsy system enables access to more patients.



Standard Eviva 9g and 12g Devices

Trocar Petite Eviva Devices

Blunt Nose Petite Eviva Devices

Eviva gives more women an alternative to open surgical biopsy with the ability to biopsy to a minimum breast compression of 16 mm.

Hologic's premier stereotactic and tomosynthesis biopsy solution also offers patients a positive cosmetic outcome post-biopsy with maximized core retrieval and minimal incision size.

Hologic 9g device and sample

3.7mm incision → ●

2.8mm sample → ●

Competitive 8g device and sample

6.1mm incision → ●

3.3mm sample → ●



A Complete Solution

The Eviva breast biopsy device is quickly becoming the device of choice for physicians performing stereotactic or tomosynthesis breast procedures. Physicians have found that total procedure time with the Eviva breast biopsy system is greatly reduced, largely due to:

- Total tissue acquisition typically lasting 30 seconds*
- Collection of cores in a protected remote chamber
- Integrated biopsy site marking



Eviva breast biopsy device

“...time to perform the procedure is reduced by at least fifty percent, thus reducing patient time on the biopsy table, streamlining the workflow, and allowing for more effective use of staff and physician time.”

— Dr. Stuart Kaplan
Mount Sinai Medical Center,
Miami Beach, Florida, USA

Note: Availability may vary by country.

*Data on file with Hologic.



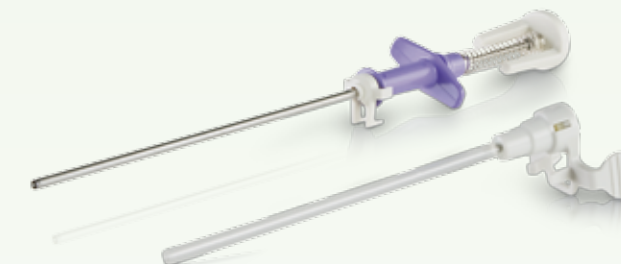
In addition to speed, Eviva provides physicians a high level of both consistency and control in every procedure.

The saline lavage and constant aspiration of the Eviva device aids in consistently acquiring high-quality cores. The integrated saline feature is designed to transport cores smoothly, while reducing the occurrence of hematoma.*

The tactile thumb wheel provides direct control of the tissue sampling location during the procedure.



The Eviva device's integrated biopsy site marking solution provides additional physician control by utilizing an introducer sheath, and end-deploy marker ensuring marker delivery into the cavity.



SecurMark for Eviva
Biopsy Site Marker System

No Lines. No Waiting.

Hologic iStore is Now Open!

Providing you a fast and easy way to order ATEC, Eviva and Celerio breast biopsy devices, biopsy drapes, and the MammoPad breast cushion supplies online.



To learn more, please contact <http://signup.hologic.com>

*Data on file with Hologic.

Device Compatibility for the Eviva Breast Biopsy System

Prone Stereotactic X-ray Breast Biopsy Guidance System Compatibility

Hologic MultiCare® Platinum Stereotactic Breast Biopsy Guidance System		
Hologic Devices Eviva 0913-20 Eviva 1213-20 Eviva 0913-12T Eviva 0913-12 Eviva 0910-12T	Adapter Eviva_STX_KIT_13CM	Ancillary Products NG09L NG12L

Siemens & Fischer MammoTest		
Hologic Devices Eviva 0913-20 Eviva 1213-20 Eviva 0913-12T Eviva 0913-12	Adapter Eviva_STX_KIT_MTEST	Ancillary Products NG09L NG12L

Siemens & Fischer MammoTest Lateral Arm Approach		
Hologic Devices Eviva 0913-20 Eviva 1213-20 Eviva 0913-12T Eviva 0913-12	Adapter Eviva_STX_KIT_MTEST	Ancillary Products NG09L NG12L

Upright Breast Biopsy Guidance System Compatibility

Hologic Affirm™ Breast Biopsy Guidance System		
Hologic Devices Eviva 0913-20 Eviva 1213-20 Eviva 0913-12T Eviva 0913-12 Eviva 0910-20 Eviva 1210-20 Eviva 0910-12T Eviva 0910-12	Adapter Eviva_STX_KIT_AFFIRM	Ancillary Products NG09L NG12L

Fuji Amulet		
Hologic Devices Eviva 0913-20 Eviva 1213-20 Eviva 0913-12T Eviva 0913-12 Eviva 0910-20 Eviva 1210-20 Eviva 0910-12T Eviva 0910-12	Adapter EVIVA_STX_KIT_AMULET	Ancillary Products NG09R NG12R

GE Senographe DS® and GE Senographe® Essential Lateral Arm Approach		
Hologic Devices Eviva 0913-20 Eviva 1213-20 Eviva 0913-12T Eviva 0913-12	Adapter Eviva_STX_KIT_GELAT (Lateral Approach) Eviva_STX_KIT_GEL-V (Vertical and Lateral Approach)	Ancillary Products NG09R NG12R

GE Senographe DS® and GE Senographe® Essential Vertical Approach		
Hologic Devices Eviva 0910-20 Eviva 1210-20 Eviva 0910-12T Eviva 0910-12	Adapter Eviva_STX_KIT_GEVER (Vertical Approach)* Eviva_STX_KIT_GEL-V (Vertical and Lateral Approach)*	Ancillary Products NG09R NG12R

*Eviva Adapter Kits for GE systems include two(2) reusable needle guide bushings

Hologic StereoLoc® II Breast Biopsy Guidance System		
Hologic Devices Eviva 0910-20 Eviva 1210-20 Eviva 0910-12T Eviva 0910-12	Adapter Eviva_STX_KIT_SLOC	Ancillary Products NG09L NG12L

Siemens MAMMOMAT® Inspiration Vertical Approach		
Hologic Devices Eviva 0913-20 Eviva 1213-20 Eviva 0913-12T Eviva 0913-12 Eviva 0910-12T Eviva 0910-12	Adapter EVIVA_STX_KIT_INSPIR	Ancillary Products NG09R NG12R

Siemens MAMMOMAT® Inspiration Lateral Approach		
Hologic Devices Eviva 0910-20 Eviva 1210-20 Eviva 0910-12T	Adapter EVIVA_STX_KIT_INSPIR	Ancillary Products NG09R NG12R

Siemens® Opdima		
Hologic Devices Eviva 0910-20 Eviva 1210-20 Eviva 0910-12T Eviva 0910-12	Adapter Eviva_STX_KIT_OPDIMA	Ancillary Products NG09R NG12R

Giotto Image with Biopsy Digit		
Hologic Devices Eviva 0913-20 Eviva 1213-20 Eviva 0913-12T Eviva 0913-12 Eviva 0910-20 Eviva 1210-20 Eviva 0910-12T Eviva 0910-12	Adapter Eviva_STX_KIT_GIOTTO	Ancillary Products NG09R NG12R

Note: Availability may vary by country.

Key to Ordering Eviva Devices

Eviva 0913-20

Eviva 09 13 20

Device Type		
Outer Cannula (incision size) Needle Gauge (g) 09: 9g, 12: 12g	}	
Needle Length (cm) 10: 10 cm long, 13: 13 cm long	}	
Aperture Size (mm) (core length) 12: 12 mm aperture, 20: 20 mm aperture	}	
Suffix (if any) T: Trocar Petite Device	}	

Breast Biopsy Site Markers for use with the Eviva Breast Biopsy System

Hologic's biopsy site marking solutions provide physicians distinction and ease of use.

Hologic provides a wide array of biopsy site marking options for the Eviva system, with a total of seven clearly distinct shapes.

SecurMark® for Eviva biopsy site markers

- Features a rigid end-deploy delivery system.
- SecurMark biopsy site markers are comprised of:
 - o A bio-absorbable suture like netting, designed to minimize movement within the biopsy cavity, that surrounds a bio-compatible permanent marker.
 - o Two titanium and three stainless steel shapes available.

TriMark® for Eviva biopsy site markers

- Designed for thin breasted patients and superficial lesions.
- Features a rigid end-deploy delivery system.
- TriMark biopsy site markers are comprised of bio-compatible permanent titanium.
- Two shapes available.

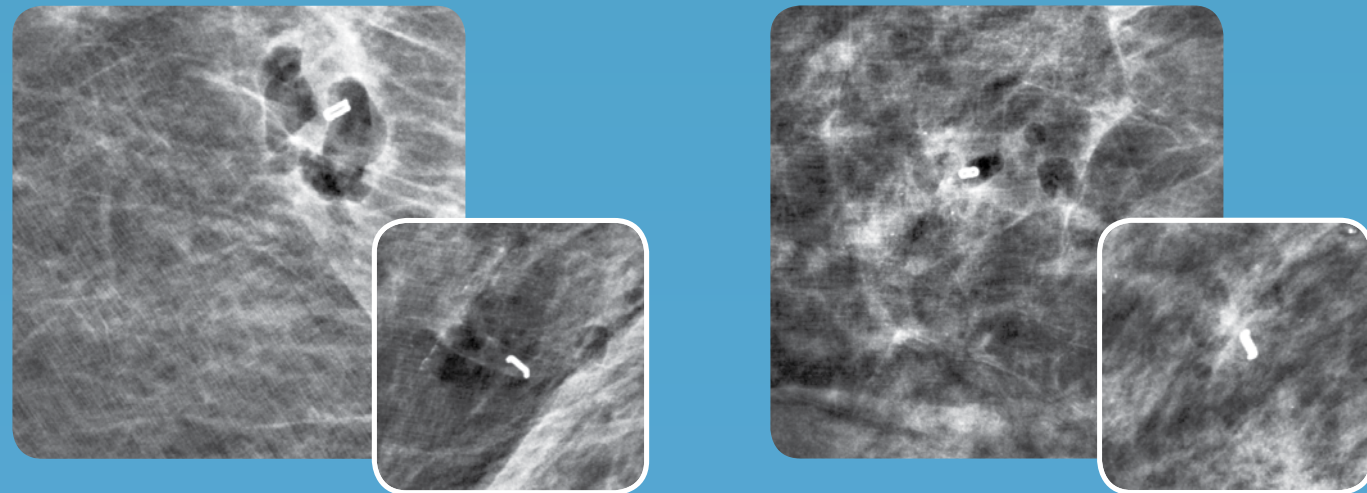
Biopsy Site Marker Compatibility for the Eviva Breast Biopsy System



SecurMark Biopsy Site Markers



TriMark Biopsy Site Markers



SecurMark biopsy site marker in stainless steel shape one (1) under mammography

Note: Secondary images are side views

SecurMark biopsy site marker in stainless steel shape two (2)

		Hologic Biopsy Devices							
		Eviva 0913-20	Eviva 0913-12	Eviva 0913-12T	Eviva 0910-20	Eviva 0910-12	Eviva 0910-12T	Eviva 1213-20	Eviva 1210-20
Biopsy Site Marker Options	SMark-Eviva-13	✓		✓				✓	
	SMark-Eviva-2S-13	✓		✓				✓	
	SMark-E-13-ss1	✓		✓				✓	
	SMark-E-13-ss2	✓		✓				✓	
	SMark-E-13-ss3	✓		✓				✓	
	SMark-Eviva-10				✓		✓		✓
	SMark-Eviva-2S-10				✓		✓		✓
	SMark-E-10-ss1				✓		✓		✓
	SMark-E-10-ss2				✓		✓		✓
	SMark-E-10-ss3				✓		✓		✓
	TriMark-Eviva-13	✓	✓	✓				✓	
	TriMark-Eviva-10				✓	✓	✓		✓
	TriMark-Eviva-2S-13	✓	✓	✓				✓	
	TriMark-Eviva-2S-10				✓	✓	✓		✓

Note: Shapes appear larger than actual size. Availability may vary by country.

At Hologic, we turn passion into action, and action into change.

Hologic is defining the standard of care in women's health. Our technologies help doctors see better, know sooner, reach further and touch more lives.

BREAST IMAGING SOLUTIONS • INTERVENTIONAL BREAST SOLUTIONS • BONE HEALTH
PRENATAL HEALTH • GYNECOLOGIC HEALTH • MOLECULAR DIAGNOSTICS

HOLOGIC®

www.hologic.com | info@hologic.com | +1.781.999.7300

North America / Latin America

250 Campus Drive
Marlborough, MA 01752 USA
Tel: +1.508.263.2900
Fax: +1.508.229.2795
USA

Europe

Everest (Cross Point)
Leuvensesteenweg 250A
1800 Vilvoorde
Belgium

Asia Pacific

7th Floor, Biotech Centre 2
No. 11 Science Park West Avenue
Hong Kong Science Park
Shatin, New Territories
Hong Kong

Australia

Suite 402, Level 4
2 Lyon Park Road
Macquarie Park NSW 2113
Australia