

SecurXchange® 3DView™ Mammography Viewer

Easy Access to Hologic 3D Mammography Images

Improved Communication and Patient Care

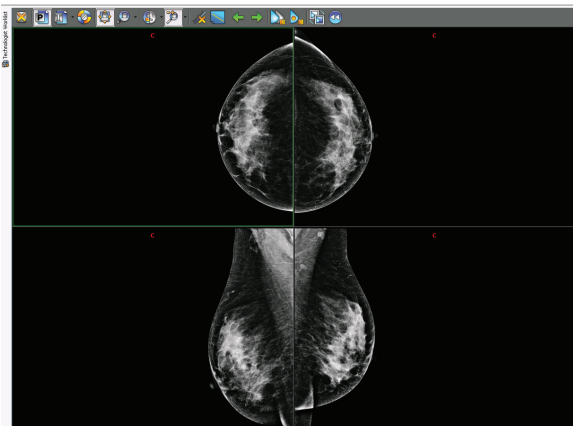
Together with our SecurXchange Archive or Router, SecurXchange 3DView Mammography Viewer allows the display of patients' breast imaging studies in a non-diagnostic environment. The software allows the user to view conventional 2D digital mammography images, as well as 3D mammography studies via this web-enabled viewer. Using a desktop or laptop in an office environment, images can be viewed prior to the patient's appointment or while discussing findings with the patient.

Easy Access

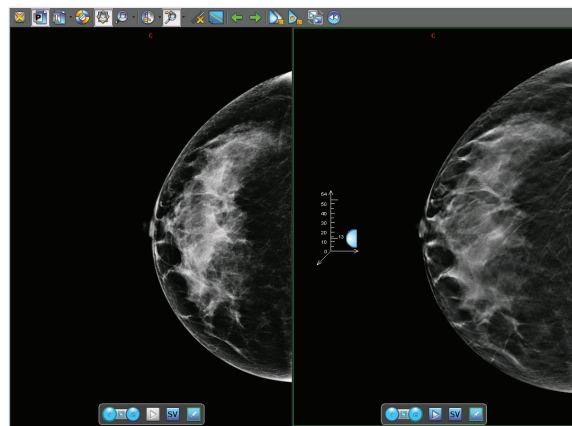
Each SecurXchange Archive will have one 3DView Mammography Viewer license included. Licenses may also be purchased for the SecurXchange Router. The viewer can be accessed using a browser on a conveniently located PC, for viewing conventional mammography and 3D digital mammography images. Technologists, attending physicians or surgeons can all benefit by having access to these images from anywhere within the enterprise.

Substantial Set of Viewing Tools

- Ability to view digital mammography studies, including 3D mammography images stored in BTO format
- Tomosynthesis viewing tools, including the ability to toggle between 2D and the corresponding 3D mammography view
- Additional tools allow measurement, window level adjustment, and magnification
- Image import from CD and export capability included



Display of screening mammogram

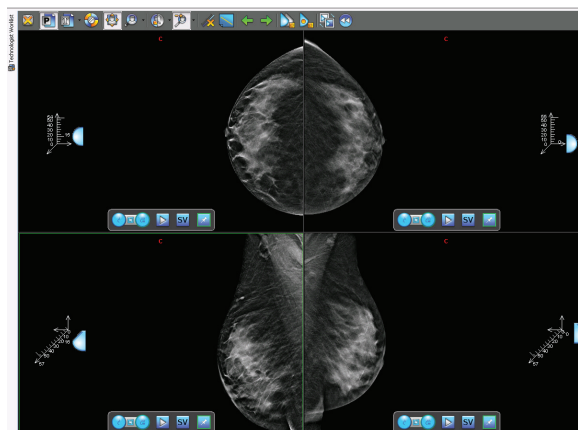


Side by side viewing of the conventional 2D image and the corresponding 3D mammography image

Specifications

Capabilities

- Single user license included with every SecurXchange Archive (Additional licenses may be purchased)
- Available as an optional license on SecurXchange Router
- Viewing of multiple studies side-by-side (Conventional 2D and 3D mammography)
- Fast retrieval of multi-gigabyte studies for viewing
- Presentation State (GSPS) viewing
- Support for DICOM print
- Export and import functions included
- DICOM dump
- Thumbnail images allow drag and drop for quick placement
- Standard hanging protocols included



Quarter-tiled 2D/3D mammography images showing 3D viewing tools

Minimum System Requirements for 3DView Mammography Viewer

Hardware Requirements	
CPU	Intel Core i5 2400 or AMD A10-4600
Memory	8 GB RAM or more
Hard Drive	Minimum 128 GB of disk space 7200 rpm minimum, SSD recommended
Monitor	1920 x 1080 DirectX 11 video card
Network	Gigabit connectivity
Software Requirements	
OS	Windows 7 64-bit (recommended)
JAVA	Version 7 (recommended) Version 6 update 12, or newer
SecurXchange	Version 2.1.4 or later (note: BTO format required for 3D mammography viewing)

hologic.com | info@hologic.com | +1.781.999.7300

DS-01520-001 US/International (08/14) © 2014 Hologic, Inc. All rights reserved. Printed in the USA. Specifications subject to change without notice. Hologic, 3DView, SecurXchange and associated logos are trademarks and/or registered trademarks of Hologic, Inc. and/or its subsidiaries in the United States and/or other countries. All other trademarks, registered trademarks, and product names are the property of their respective owners. This information is intended for medical professionals in the U.S. and other markets and is not intended as a product solicitation or promotion where such activities are prohibited. Because Hologic materials are distributed through websites, eBroadcasts and tradeshows, it is not always possible to control where such materials appear. For specific information on what products are available for sale in a particular country, please contact your local Hologic representative or write to womenshealth@hologic.com

HOLOGIC®