

REF 95-455: 144 tests or REF 95-459: 1680 tests

IVD *In vitro* diagnostic medical device

Rx only

Σ 144 Contains sufficient reagents for 144 tests

Σ 1680 Contains sufficient reagents for 1680 tests

-30°C to -15°C Temperature limitation

- [TABLE OF CONTENTS](#)
- [INDICATIONS AND USE](#)
- [MATERIALS AND METHODS](#)
- [SAFETY ISSUES](#)
- [INSTRUCTIONS FOR USE](#)
- [BIBLIOGRAPHY](#)
- [CONTACT INFORMATION](#)
- [NOTICE TO RECIPIENT ABOUT LIMITED LICENSE](#)
- [LIMITED PRODUCT WARRANTY](#)

I. INDICATIONS AND USE

A. Intended Use

The Invader® MTHFR 1298 test is an *in vitro* diagnostic test intended for the detection and genotyping of a single point mutation (A to C at position 1298) of the human 5,10-methylenetetrahydrofolate reductase (MTHFR) gene in isolated genomic DNA obtained from whole blood potassium EDTA samples from patients with suspected thrombophilia.

B. Clinical Significance

MTHFR is the metabolic enzyme involved in the conversion of homocysteine to methionine via the remethylation pathway. The MTHFR A1298C mutation is a base change of an adenine (A), for a cytosine (C) resulting in a glutamate to an alanine change at amino acid 429.¹ The MTHFR A1298C mutation is associated with a decrease in enzymatic activity, 68% of the normal enzymatic activity². Reduced levels of MTHFR activity lead to elevated plasma concentrations of homocysteine, a condition referred to as hyperhomocysteinemia, a recognized risk factor for thrombophilia.² Elevated plasma homocysteine has also been associated with an increased risk of cardiovascular disease and neural tube defects in fetuses of pregnant women.³⁻⁵ The MTHFR A1298C allele frequency is about 27% in Ashkenazi Jews and 33% in US populations.^{6-8,4,5}

C. Principles and Procedures

The Invader® MTHFR 1298 test utilizes the Invader Plus® chemistry with DNA isolated from human whole blood for the detection of the targeted sequence polymorphism. Specifically, the Invader Plus® chemistry utilizes a single-tube, two phase reaction, including target amplification and signal generation (mediated by Invader® chemistry). Invader Plus® reaction mixes are assembled by combining the MTHFR 1298 Oligo Mix, Universal Enzyme Mix, and Universal Buffer. In a 96-well plate, reaction mix is combined with purified genomic DNA samples, as well as four (4) controls included with the test. The No DNA Control is used by the interpretive software to set the "noise" component of the run for "signal-to-noise" calculations. The genotype-specific controls (WT, HET, MUT) ensure reagents were assembled correctly and perform according to the specifications. The 96-well plate is transferred to an appropriately programmed thermal cycler for target amplification and signal generation. In the target amplification phase of the reaction, amplification is carried out using "two-step" cycling conditions (i.e., denaturation & annealing/extension). Following amplification, Taq polymerase is inactivated by a 10 minute incubation at 99°C, after which the thermal cycler proceeds to 63°C to initiate the signal generation (Invader®) phase of the reaction (see Figure 1).

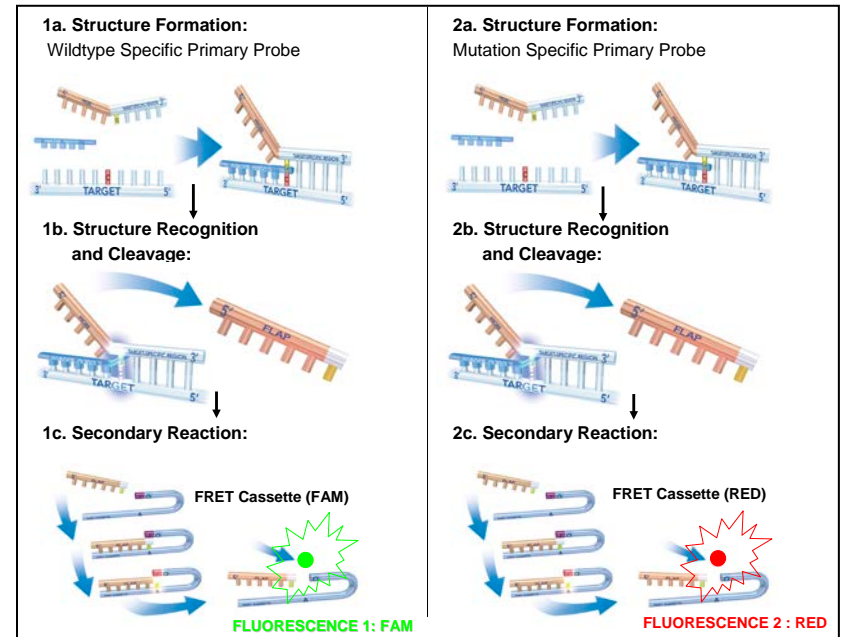


Figure 1: Invader® Signal Generation Phase

During the signal generation phase, a discriminatory Primary Probe transiently hybridizes to the amplified target sequence along with an Invader[®] oligonucleotide, to form an overlapping structure. The 5'-end of the Primary Probe includes a 5'-flap that does not hybridize to the target DNA. The 3'-nucleotide of the bound Invader[®] oligonucleotide overlaps the Primary Probe, and does not hybridize to the target DNA. The Cleavase[®] enzyme recognizes this overlapping structure and cleaves off the unpaired 5'-flap of the Primary Probe, releasing it as a target-specific product. The Primary Probe is designed to have a melting temperature aligned with the Invader[®] reaction temperature so that under the isothermal reaction conditions (~63°C) the Primary Probes cycle on and off the target DNA. This allows for multiple rounds of Primary Probe cleavage for each DNA target resulting in an accumulation of the number of released 5'-flaps. The initial reaction, the released 5'-flap transiently hybridizes with a corresponding FRET cassette forming an overlapping structure that is recognized and the fluorophore is cleaved from the FRET cassette by the Cleavase[®] enzyme. The 5'-flap is designed to have a melting temperature aligned with the Invader[®] reaction temperature, so that the 5'-flaps cycle on and off of the corresponding FRET cassettes. This allows for multiple rounds of FRET cassette cleavage for each 5'-flap, and an accumulation of released fluorophore. When the FRET cassette is cleaved, a fluorophore and quencher are separated, generating detectable fluorescence signal. The format uses two different discriminatory Primary Probes, one for the mutant allele and one for the wild type allele (Figure 1). Each Primary Probe is assigned a unique 5'-flap, and distinct FRET cassette, with a spectrally distinct fluorophore. By design, the released 5'-flaps will bind only to their respective FRET cassettes to generate a target-specific signal, linking the wild type allele with one fluorophore (Fluorescence 1: FAM) and the mutant allele with the second fluorophore (Fluorescence 2: RED).

II. MATERIALS AND METHODS

A. Reagents Provided

Note: For information on any hazard and precautionary statements that may be associated with reagents, refer to the Safety Data Sheet Library at www.hologiccsds.com.

Table 1: Reagents Provided	
Reagent	Vial Label Abbreviation
MTHFR 1298 Oligo Mix	None
Universal Buffer	B
Universal Enzyme Mix	E
Invader [®] MTHFR 1298 WT	None
Invader [®] MTHFR 1298 HET	None
Invader [®] MTHFR 1298 MUT	None
No DNA Control	C4

B. Reaction Mix

All of the Invader[®] MTHFR 1298 reagents are supplied in concentrations ready for use. The amount of reagents required for each reaction is summarized in Table 2. Make sure to mix reagents well prior to use.

C. Other Materials Provided

Invader Call Reporter[®] software and Invader[®] MTHFR 1298 Software
Software User Manual for Invader[®] MTHFR 1298 (MAN-01690)

Both software programs are provided along with the first order/shipment of the Invader[®] MTHFR 1298 test. Contact Hologic Technical Support (1 888 484 4747) if an additional copy is needed.

D. Materials and Reagents Needed But Not Provided

- Thermal cycler with heated lid capable of holding set temperatures within +/- 1°C.
- Multi-well Fluorometer (see Software User Manual for Invader[®] MTHFR 1298, MAN-01690, for fluorometer software specifications)
- Computer (See Software User Manual for Invader[®] MTHFR 1298, MAN-01690, for computer specifications)
- Pipette tips, filter barrier
- 96-well plates
- Optically Clear Adhesive Plate sealers
- Nuclease-free water
- Mineral oil
- Microcentrifuge tubes
- Commercially Available DNA Extraction kit (or validated in-house laboratory method)
- General laboratory equipment as needed (tube racks, micropipettors, multichannel pipette, microcentrifuge, vortex mixer).

E. Storage and Handling



NOTE: Product requires multiple storage temperatures for reagents.

Immediately upon receipt, genotype-specific controls are to be stored at +2°C to +8°C. All other components of the kit should be stored between -30°C to -15°C in a non-frost-free freezer.

Prior to use, allow reagents to equilibrate to room temperature, excluding the Universal Enzyme Mix which should remain between -30°C to -15°C until just prior to use. Minimize reagent exposure to light. Do not subject the reagents to more than 15 freeze-thaw cycles.

F. Indications of Instability

When properly stored, the reagents are stable through the dating indicated on the label. There are no obvious signs to indicate instability of this product. However, genotype-specific controls should be run simultaneously with unknown specimens. Increase in non-specific fluorescence signal may indicate reagent instability. If this is observed, contact Hologic Technical Support (1 888 484 4747).

G. Specimen Collection and Preparation for Analysis

Clinical Specimens: Human whole blood samples should be anti-coagulated with potassium EDTA. DNA extraction may be accomplished using commercially available DNA extraction chemistries, capable of obtaining DNA concentrations greater than 5 ng/μL for use in the Invader[®] MTHFR 1298 test.

Genotype-Specific Control Samples: Genotype-specific (i.e., WT, HET, MUT) controls are provided with the test. Genotype-specific controls consist of synthetic DNA in a blood-like matrix, and are not infectious. Genotype-specific controls must be extracted prior to use, and can serve as a DNA extraction control as well if prepared using the same method as the blood samples. Prior to extraction, genotype-specific controls should be vortexed (30-60 seconds) to re-suspend the contents.

DNA Storage: The purified DNA from samples and genotype-specific controls can be used immediately or safely stored in elution buffer as per the DNA Extraction Kit manufacturer's recommendation.

DNA Preparation: Extracted clinical specimen and genotype-specific control DNA must be diluted 1:20 in nuclease-free water just prior to running the Invader[®] MTHFR 1298 test (see Section IV A. 3). The level of DNA present in the extracted genotype-specific controls may not be detectable with certain quantitation methods and is not quantifiable by spectrophotometer measurements.

III. SAFETY ISSUES

A. Safety and Handling Precautions

1. Universal safety precautions should be used when handling any human whole blood samples. Specimens should be disposed of according to local requirements.
2. Product components (product residuals and packaging) can be considered laboratory waste. Dispose of unused reagents and waste in accordance with applicable federal, state, and local regulations.

B. Precautions

1. The Invader[®] MTHFR 1298 test is intended for *in vitro* diagnostic use.
2. These components have been tested as a unit. Do not interchange components from their sources or from different lots. Do not pool reagents from different lots or from different vials of the same lot.
3. Take reasonable precautions when handling reagents. Use disposable gloves when handling suspected carcinogens or toxic materials.
4. Do not smoke, eat or drink in areas where specimens or reagents are being handled.
5. Avoid contact of eyes and mucous membranes with reagents. If reagents come in contact with sensitive areas, wash with copious amounts of water.
6. Patient specimens and all materials coming into contact with them should be handled as if capable of transmitting infection and disposed of with proper precautions. Never pipette by mouth and avoid contact of reagents and specimens with skin and mucous membranes.
7. Avoid microbial contamination of reagents as this could produce incorrect results.
8. Incubation times and temperatures other than those specified may give erroneous results.
9. The reagents have been optimally formulated and further dilution may result in loss of performance.
10. Do not use reagents after their expiration date.
11. Use fresh mineral oil for each reaction set-up (do not transfer these reagents back to the original container once they have been dispensed).
12. Provided genotype-specific controls are in a blood-like matrix and are not infectious. Material can be used in a Bio-Safety Level 1 laboratory.
13. **IMPORTANT CONTAMINATION PRECAUTIONS: This product generates amplified DNA targets. When performing the test, caution must be taken to prevent amplicon contamination of work areas. Always use barrier pipette tips for pipetting procedures. Perform the amplification set up in an isolated area with dedicated pipettes. Use tips and tubes that are DNase/RNase free.**



C. Toxicity of Invader[®] Reagents

The Invader[®] MTHFR 1298 test reagents are not controlled as dangerous substances and no toxicity has been determined.

IV. INSTRUCTIONS FOR USE

A. Invader[®] Test Step by Step Procedure

Software Set up

1. Open the Invader Call Reporter[®] software and complete the testing information. Details for using the software can be found in the software user manual (Software User Manual for Invader[®] MTHFR 1298, MAN-01690).
 - a. Enter the name of the operator.
 - b. In the dropdown "Menu Selection" select the MTHFR 1298 test.
 - c. Enter the number of samples to be tested in the space provided.
 - d. Click the "Proceed to Mix Preparation" button located in the lower right corner of the window.

- e. On the Mix Preparation tab, fill in the green shaded boxes for Lot Numbers and Expiration Dates for the reagents used during the testing.
 - f. If desired, click the "View/Save PDF" button located in the upper right corner of the window. Print the PDF and then close the PDF window.
 - g. On the Sample Placement tab, enter the Sample IDs into the list on the left side of window. The Sample ID list runs down columns (i.e., wells E1 through H1, followed by A2 through H2, and then A3 through H3...).
 - h. Verify all samples are entered in the list and are in correct position of the sample grid.
 - i. If desired, click the "View/Save PDF" button located in the upper right corner of the window. Print the PDF and then close the PDF Window.
 - j. Close the Invader Call Reporter[®] software.
2. Confirm the thermal cycler is programmed as stated in Figure 3.

Sample Preparation (1:20 Dilution)

3. Dilute extracted genotype-specific controls and all extracted sample DNAs (1:20) using 5 μ L of genotype-specific control/sample and 95 μ L nuclease-free water in a 0.5 mL tube or similar consumable. Mix the diluted genotype-specific controls/samples thoroughly. Do not dilute the No DNA Control (Control 4) prior to use.

Mix Preparation

4. Remove the reagents (Oligo Mix, Universal Buffer, No DNA Control) from their respective storage locations and allow them to equilibrate to room temperature for approximately 30 minutes. Do not remove the Universal Enzyme Mix from the -30°C to -15°C freezer until just prior to use.
5. Vortex the components of the reaction mix thoroughly and spin down the contents in a microcentrifuge for 3 – 5 seconds.
6. Combine the components of the reaction mix as shown in Table 2 in a microcentrifuge tube.



Note: The prepared reaction mixture must be used within 30 minutes.

Note: Controls must be placed in the correct wells for proper data interpretation. Refer to Figure 2.

Table 2: Invader[®] MTHFR 1298 Reaction Mix

Component	μ L/well	Number of Rxns	25% Overage	Total Volume (μ L)
MTHFR 1298 Oligo Mix	7.5 μ L	<i>k</i>	1.25	=7.5 <i>k</i> (1.25)
Universal Buffer	2.0 μ L	<i>k</i>	1.25	=2.0 <i>k</i> (1.25)
Universal Enzyme Mix	0.5 μ L	<i>k</i>	1.25	=0.5 <i>k</i> (1.25)
Total Mix Volume	10 μL	<i>k</i>	1.25	=10<i>k</i>(1.25)

7. Vortex the reaction mix thoroughly and spin down the contents in a microcentrifuge for 3-5 seconds.

Plate Set up

8. Reaction mix may be aliquoted into a 96-well plate to facilitate the use of a multi-channel pipettor.
9. Add 10 μ L of reaction mix to the bottom of each control and sample well of the reaction plate.

10. Dispense 10 μ L of the appropriate control or sample (genotype-specific controls and all samples are diluted (See Step 3), Control 4 (NDC) is undiluted) to bottom of the appropriate well of the reaction plate (See Figure 2). Mix by pipetting up and down 3 – 5 times upon addition to ensure reaction homogeneity. Change pipette tips between every addition.
11. Overlay all control and sample wells with 20 μ L of mineral oil by dispensing along the side of the wells. Change pipette tips between every addition.
12. Cover the reaction plate with optically clear adhesive film. Thoroughly secure the film to the surface of the plate.

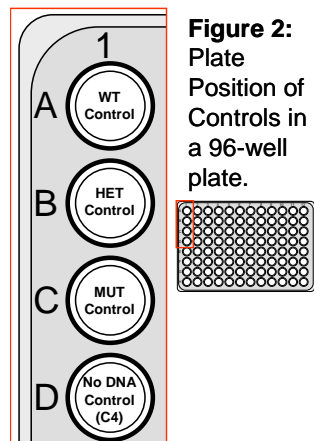


Figure 2:
Plate
Position of
Controls in
a 96-well
plate.

13. Visually confirm no bubbles exist in the reaction wells. If bubbles are visible, remove bubbles (e.g., centrifuge plate briefly).
14. Place the reaction plate in the thermal cycler.

Step	Description	Temperature ($^{\circ}$ C)	Time	Cycles
1	Denaturation	95	2 Minutes	2
2	Anneal / Extend	72	2 Minutes	
3	Denaturation	94	0.5 Minutes	28
4	Anneal / Extend	72	1.5 Minutes	
5	Heat Inactivate Polymerase	99	10 Minutes	1
6	Invader [®] Reaction	63	1 Minute	
7	Hold	10	Hold	

Figure 3: Invader Reaction Program

15. Start the Invader reaction program.
16. When the reaction profile is complete, the reaction plate can be held in the thermal cycler at +10 $^{\circ}$ C or stored in a refrigerator (+2 $^{\circ}$ C to +8 $^{\circ}$ C) protected from light, overnight.

Data Collection

17. Allow the reaction plate to equilibrate to room temperature on the bench top at least 1 minute prior to reading the plate.
18. Visually confirm no bubbles exist in the reaction wells. If bubbles are visible, remove bubbles (e.g., centrifuge plate briefly).
19. Read the reaction plate on a multi-well fluorometer according to manufacturer's instructions. Verify parameters match Table 3.

Table 3: Recommended Multi-well Fluorometer Settings		
Setting Category	Measurement 1 (FAM)	Measurement 2 (Red)
Mode:	Fluorescence Top Reading	Fluorescence Top Reading
Do not use "Plate with cover" option		
Excitation Wavelength (Bandwidth) :	485 (20) nm	560 (20) nm
Emission wavelength (Bandwidth) :	535 (25) nm	612 (10) nm
Number of Reads:	10	10
Integration Time:	20 μ s	20 μ s
Lag Time:	0 μ s	0 μ s
Settle Time:	0 ms	0 ms
Multiple Reads per Well:	Not selected	Not selected
Label Name:	Label 1	Label 2

20. Place the 96-well plate to be analyzed onto the plate carrier with the A1-well oriented to the upper left corner of the plate carrier. Do not remove the optically clear adhesive film from the surface of the plate. Read the entire plate according to manufacturer's instructions.



NOTE: If the No DNA Control (NDC) signal is not greater than 600 counts for FAM or Red fluorescence, re-read the plate adjusting the gain setting(s) accordingly so that each value is greater than 600 counts and the reader is in the linear dynamic range according to the manufacturer's instructions.

Data Analysis

21. Open the Invader Call Reporter[®] software.
22. Select the plate(s) to be analyzed by highlighting the appropriate row in the blue "Active Assay" field.
23. Click the "Load Selected" button in lower left area of the window. This should allow the "Results" tab to be selected.
24. Click on the "Results" tab.
25. Select the Raw Data File by clicking on the "Select File" button and select the appropriate file in the browser.
26. Select the appropriate Worksheet from the available choices in the dropdown menu.
27. Click the "Import Raw Data" button to populate data fields.
28. If desired, click "View/Save PDF" button located in the upper right corner of window. Print the PDF and then close the PDF window.
29. Click on the "Summary" tab to view sample validity and genotype results.
30. If desired, click the "View/Save PDF" button located in the upper right corner of window. Print the PDF and then close the PDF window.

31. If desired, click the “Finish Active Assay” button to delete run information when testing and analysis is completed.

B. Quality Control Procedures

Differences in blood processing and technical procedures in the user’s laboratory may produce variability in results, necessitating regular evaluation of laboratory designated controls in addition to the following procedures.

Prior to initial use of this test in the user’s laboratory, the performance of the test may be verified by testing a number of positive and negative samples with known characteristics. These quality control tests should be repeated for each new lot or a change in test parameters.

Test verification on a daily basis may be accomplished through the proper use of the above-mentioned laboratory designated controls, as described in this section.

The No DNA Control (C4) is used to establish the amount of signal generated in the absence of target.

Test runs are valid when the genotype-specific controls yield the appropriate genotype results (Table 4). If any of the genotype-specific controls are called incorrectly or EQ (equivocal), the run is invalid and must be repeated. A test run with invalid control results will fail to provide sample results. In the event of a control failure, all samples in the run should be re-tested.

Unexplained discrepancies in control results should be referred to Hologic Technical Support (1 888 484 4747). See the Troubleshooting section of this package insert for additional information.

All quality control requirements should be performed in conformance with local, state, and/or federal regulations or accreditation requirements.

C. Interpretation of the Results

Results from the Invader® MTHFR 1298 test are reported to the user as a genotype “call”, indicating which genotype was detected in the sample (WT, HET, MUT). The results also report sample validity and run validity. Genotype call and corresponding nucleotides are shown in Table 4.

Genotype	Invader® MTHFR 1298 Genotype	Nucleotides
Homozygous Wild Type	WT	AA
Heterozygous	HET	AC
Homozygous Mutant	MUT	CC

The Results in the Invader Call Reporter® software display sample and control data. If results are invalid or not displayed, refer to the Troubleshooting section of this package insert and the Software User Manual for Invader® MTHFR 1298 (MAN-01690).

The “Summary” tab in the Invader Call Reporter® software displays results for all samples and controls in a condensed format. If results are invalid or not displayed, refer to the Troubleshooting section of this package insert or in the Software User Manual for Invader® MTHFR 1298 (MAN-01690).

If any of the controls are invalid, sample results will not be displayed.

D. Limitations

General Limitations:

Reagents may demonstrate unexpected performance in previously untested samples. The possibility of unexpected performance even in tested blood samples cannot be completely eliminated due to the biological variability of sample matrices. Contact Hologic Technical Support (1 888 484 4747) with any documented unexpected result(s).

Specific Limitations:

The MTHFR 1298 mutation is A1298C. An additional mutation in the human 5,10-methylenetetrahydrofolate reductase (MTHFR) gene is T1317C. This mutation has been shown to have no effect on the Invader® MTHFR 1298 test’s accuracy. However, it is recommended that the laboratory assess the possibility of any additional rare mutations that may generate false MTHFR 1298 results and report this as a limitation, if applicable.

E. Summary of Expected Results

1. Accuracy compared to bi-directional DNA Sequencing

Human whole blood samples (n = 348) underwent DNA extraction and subsequent bi-directional DNA sequence analysis. The same DNA samples were then analyzed using the Invader® MTHFR 1298 test. The observed agreement between the Invader® MTHFR 1298 test and bi-directional DNA sequencing was 100% (347/347). The first run agreement with bi-directional DNA sequencing was 99.71% (347/348), with 98.41%, one-sided lower 95% confidence limit (see Table 5).

MTHFR 1298 Genotype*	Number Tested	Number of Valid Results on 1 st Run	Number of Correct Genotype Calls on 1 st Run	First Run Agreement
Homozygous Wild Type (AA)	183	182**	182**	99.45%
Heterozygous (AC)	125	125	125	100%
Homozygous Mutant (CC)	40	40	40	100%
Total	348	347**	347**	99.71%

* Genotype determined through bi-directional DNA sequencing.
 ** One sample failed to generate valid results. This sample was reported as invalid (EQ) and no genotype call was assigned by the interpretive software. The EQ result was used to calculate the First Run Agreement.

2. Reproducibility

- a. Inter-laboratory Reproducibility: A multi-center external study was conducted to determine the reproducibility of the Invader® MTHFR 1298 test. A single lot of the Invader® MTHFR 1298 test was used to compare the test performance at three different study sites. Aliquots of whole blood samples for each genotype were extracted at each site. DNA from the samples underwent subsequent Invader® analysis at each site on each of five (5) non-consecutive days. Results were obtained using the MTHFR 1298 Invader Call Reporter® software (see Tables 6 and 7).

Table 6: Inter-laboratory Reproducibility of Invader® MTHFR 1298 Test

Site	Operator	Samples Tested	First Pass			Final (Following Single Retest)			Final % Agreement <small>Final Correct Calls / Samples Tested</small>
			Correct Calls	No Calls (Invalid, EQ)	Miscalls	Correct Calls	No Calls (Invalid, EQ)	Miscalls	
Site 001	1	90	90	0	0	90	0	0	100%
	2	90	90	0	0	90	0	0	100%
Site 002	1	90	90	0	0	90	0	0	100%
	2	90	90	0	0	90	0	0	100%
Site 003	1	90	90	0	0	90	0	0	100%
	2	90	90	0	0	90	0	0	100%
All	All	540	540	0	0	540	0	0	100%

Table 7: Invader® MTHFR 1298 Summary of Agreement Data for all Three Sites

Analyses	Number of Comparisons	Number of Agreements	Percent Agreement	One-Sided Lower 95% Confidence Limit
Within Operator (Within-day)	9 (samples) x 2 (operators) x 5 (days) x 3 (sites) = 270	270	100%	99.0%
Between-days (Within-Operator)	9 (samples) x 10 (day pairs) x 4 (2 reps per day) x 2 (operators) x 3 (sites) = 2160	2160	100%	99.5%
Between-operator (within-site)	9 (samples) x 4 (2 reps per operator) x 25 (day pairs between 2 operators) x 3 (sites) = 2700	2700	100%	99.5%
Between-Sites	9 (samples) x 20 (tests at site a) x 20 (tests at site b) x 3 (site pairs) = 10800	10800	100%	99.5%

- b. Lot-to-Lot Reproducibility: Whole blood samples were extracted and subjected to bi-directional DNA sequencing. The same DNA samples were then analyzed using the Invader® MTHFR 1298 test with three different lots of the reagents. The observed agreement between all three lots of the Invader® MTHFR 1298 test and bi-directional DNA sequencing was 100% (108/108) (see Table 8). Across all genotypes tested, across all three (3) lots, the overall agreement with bi-directional sequencing was 100% (108/108), with 97.26%, one-sided lower 95% confidence limit.

Table 8: Lot-to-Lot Agreement between Invader® MTHFR 1298 and Bi-directional DNA Sequencing

MTHFR 1298 Genotype (bi-directional sequencing)	Number of Genotypes Tested	Replicates per Sample	Correct Genotype Calls in 1 st Run			Invalid Calls in 1 st Run			Percent Agreement
			Lot 1	Lot 2	Lot 3	Lot 1	Lot 2	Lot 3	
Homozygous Wild Type (AA)	3	4	12	12	12	0	0	0	100%
Heterozygous (AC)	3	4	12	12	12	0	0	0	100%
Homozygous Mutant (CC)	3	4	12	12	12	0	0	0	100%
Total	9	4	36	36	36	0	0	0	100%

3. Upper and Lower Limits of Detection

Forty (40) replicates of genomic DNA samples representing the wildtype, heterozygous and mutant MTHFR 1298 genotypes were tested at concentrations of both 5 ng/μL and 80 ng/μL, prior to 1:20 dilution for the Invader reaction, and the Invader results compared to bi-directional sequencing. For each concentration, there was 100% (120/120) agreement with bi-directional sequencing. Across all genotypes tested, for a given DNA concentration, the one-sided lower 95% confidence limit was 97.53%. Samples were also tested beyond the recommended concentrations of DNA, at 10-fold extremes of the recommended range (e.g., 0.5 ng/μL and 800 ng/μL). At these extreme concentrations, there was 89.17% (107/120) agreement at 0.5 ng/μL and 100% (120/120) agreement at 800 ng/μL concentrations.

4. Interfering Substances

Heparin (1500 U/dL human whole blood), bilirubin (10 mg/dL human whole blood), cholesterol (300 mg/dL human whole blood), potassium EDTA (1.8 mg/mL human whole blood), hemoglobin (up to 0.2% in human whole blood), and ethanol-based wash buffer (5% in DNA sample) had no impact on Invader® MTHFR 1298 performance.

F. Troubleshooting

Table 9: Troubleshooting Guide

Observation	Probable Cause	Solution
Errors occur during data import: "Check FAM & Red gain settings and read the whole plate again. (Partial plate reads are not allowed.)" "Check FAM gain setting and read the whole plate again. (Partial plate reads are not allowed.)" "Check Red gain setting and read the whole plate again. (Partial plate reads are not allowed.)"	Fluorometer issues.	See Invader Call Reporter® Invader® MTHFR 1298 Software User Manual troubleshooting guide.
	Incubation period was longer than specified length of time recommended.	Verify that the Invader Reaction Program is as specified (Section IV.A. Figure 3).
High No DNA Control FAM or Red Signal	Contamination	Re-run test taking care not to contaminate samples or reagents.
	Bubbles in reaction well.	Remove bubbles (e.g., centrifuge plate briefly) and re-read.
Bubbles in reaction well.	Over-mixing	Remove bubbles (e.g., centrifuge plate briefly).
No DNA Control is Invalid- Result for one or more Genotype-specific Control is Invalid	Incorrect control volume or no control added to well.	Vortex each reagent before adding to reaction mix.
		Verify correct reagent volumes were added to the reaction mix.
		Verify all reagents were added to the reaction mix.
		Vortex reaction mix before adding to the 96-well plate.
		Visually confirm that no volume discrepancies exist in the 96-well plate by viewing the bottom side of the plate.
	Evaporation of reaction mix/sample during run.	Verify reactions are covered by 20 µL of mineral oil.
	Evidence of contamination during genotype-specific control preparation or reaction mix preparation.	Use DNase/RNase-free aerosol barrier tips at all times.
		Do not allow pipette tips to touch any surface except the solution being pipetted.
		Use sterile tubes for preparing reaction mixes.
	Wear gloves at all times	
Controls in wrong location on plate	Verify control well location (Section IV.A. Figure 2)	

No DNA Control is Invalid- Result for one or more Genotype-specific Control is Invalid	Gain setting too low (NDC value <600 counts).	Adjust gain setting so NDC is above 600 counts.
	Genotype-specific controls not extracted	Extract genotype-specific controls using standard laboratory method.
	Improper preparation of reaction mix	Vortex each reagent before adding to reaction mix.
		Verify correct reagent volumes were added to the reaction mix.
		Verify all reagents were added to the reaction mix.
		Vortex reaction mix before adding to the 96-well plate.
Visually confirm that no volume discrepancies exist in the 96-well plate by viewing the bottom side of the plate.		
Result for sample is "Low Signal", "EQ" or "Invalid"	Insufficient sample DNA used in the reaction.	Verify concentration of at least 5 ng/µL prior to dilution and reaction set up.
		Verify 1:20 dilution made correctly (Sample Preparation section IV.A).
		If the DNA concentration is <5 ng/µL pre-dilution, repeat the DNA extraction and purification protocol to obtain purified DNA at a higher concentration.
	Repeat sample with Invader® MTHFR 1298 test.	
	Bubbles in reaction well.	Remove bubbles (e.g., centrifuge plate briefly) and re-read.
DNA sample inhibition	Repeat DNA extraction from specimen.	
	Refer to package insert performance characteristics (Interfering substances Section IV.E.4).	
	Verify 1:20 dilution made correctly (Sample Preparation section IV.A).	

Result for sample is "Low Signal", "EQ" or "Invalid"	Incorrect sample volume or no sample added to well.	Verify that no volume discrepancies exist in the 96-well plate by viewing the bottom side of the plate.
	Improper preparation of reaction mix	Vortex each reagent before adding to reaction mix.
		Verify correct reagent volumes were added to the reaction mix.
		Verify all reagents were added to the reaction mix.
		Vortex reaction mix before adding to the 96-well plate.
		Visually confirm that no volume discrepancies exist in the 96-well plate by viewing the bottom side of the plate.
	Evaporation of reaction mix/sample during run.	Verify reactions are covered by 20 µL of mineral oil.
		Verify the 96-well plate is firmly sealed with optical clear adhesive cover before incubating.
		Verify thermal cycler heated lid is firmly closed.
		If the thermal cycler requires a compression pad, verify that the compression pad is seated properly on top of the 96-well plate.
	Insufficient DNA amplification.	Verify the correct Invader Reaction Program was used (Section IV.A. Figure 3). Repeat sample test.
		Verify all reagents have been added to reaction.
	96-well plate incompatible with thermal cycler or positioned incorrectly within thermal cycler.	Verify the 96-well plate is compatible with the thermal cycler, is firmly seated in the thermal cycler and secured properly.
Sample DNA degradation (DNA may degrade if stored at room temperature).	Store extracted DNA as indicated in the DNA extraction and purification protocol prior to the Invader® test.	

Troubleshooting Re-test Procedure

If the established criteria for an acceptable genotype call (i.e. WT, HET, or MUT) are not met by a given sample, it is identified as either "Low Signal" or "EQ" and the sample(s) must be re-tested. A given extraction of a sample that has two EQ (equivocal) results in a row cannot be called by the Invader® MTHFR 1298 test. If a sample fails to produce the minimum fold-over-zero then the Invader test gives a "Low Signal" result, and the sample must be re-tested. Figure 4 illustrates the recommended re-test process for samples with "Low Signal", "EQ" or "Invalid" results.

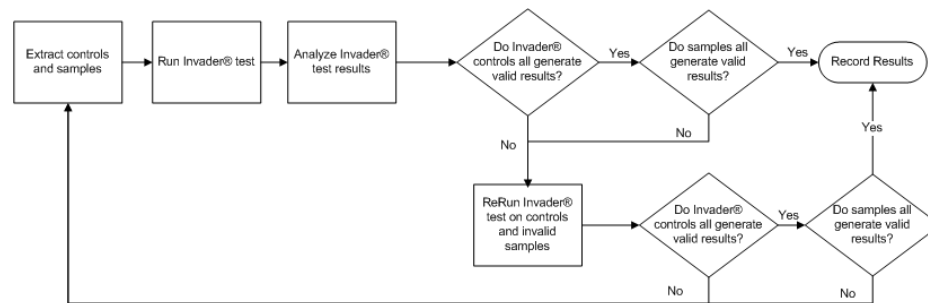


Figure 4: Recommended testing process for samples producing "Low Signal", "EQ" or "Invalid" results with the Invader® MTHFR 1298 test.

V. BIBLIOGRAPHY

1. Patnaik M, Dlott JS, Fontaine RN, Subbiah MT, Hessner MJ, Joyner KA, et al. Detection of genomic polymorphisms associated with venous thrombosis using the Invader biplex assay. *Mol Diagn* 2004;6:137-144.
2. Weisberg IS, Jacques PF, Selhub J, et al: The 1298A→C polymorphism in methylenetetrahydrofolate reductase (MTHFR): In vitro expression and association with homocysteine. *Atherosclerosis* 2001;156: 409-415.
3. Frosst P, Blom HJ, Milos R, Goyette P, Sheppard CA, Matthews RG, et al: A candidate genetic risk factor for vascular disease: a common mutation in methylenetetrahydrofolate reductase. *Nat Genet* 1995; 10: 111-113.
4. Rozen R. Genetic predisposition to hyperhomocysteinemia: deficiency of methylenetetrahydrofolate reductase (MTHFR). *Thromb Haemost* 1997;78:523-6.
5. Wilcken DEL: MTHFR 677C-T mutation, folate intake, neural-tube defect and risk of cardiovascular disease. *Lancet* 1997;350:603-604.
6. Rady PL, Tyring SK, Hudnall SD, Vargas T, Kellner LH, Nitowsky H, Matalon RK. Methylenetetrahydrofolate reductase (MTHFR): the incidence of mutations C677T and A1298C in the Ashkenazi Jewish population. *Am Journal of Med Genet* 1999;86 (4) :380-4.
7. Peng F, Labelle LA, Rainey BJ, Tsongalis GJ. Single nucleotide polymorphisms in the methylenetetrahydrofolate reductase gene are common in US Caucasian and Hispanic American populations. *Intl J of Mol Med* 2000;8 (5) :509-1.
8. Esfahani ST, Cogger EA, Caudill MA. Heterogeneity in the prevalence of methylenetetrahydrofolate reductase gene polymorphisms in women of different ethnic groups. *Journal of the American Dietetic Association* 2003;103 (2) :200-7.

VI. CONTACT INFORMATION

Manufactured and distributed by Hologic, Inc., San Diego, CA USA.

For further technical information or to order product, contact:

Hologic, Inc.
10210 Genetic Center Drive
San Diego, CA 92121 USA

Customer Support: +1 800 442 9892
customersupport@hologic.com

Technical Support: +1 888 484 4747
molecularsupport@hologic.com

For more contact information visit www.hologic.com.

VII. NOTICE TO RECIPIENT ABOUT LIMITED LICENSE

Limited License. The receipt of Product from HOLOGIC, or its authorized distributor, includes a limited, non-exclusive, non-transferable license under certain intellectual property rights held by HOLOGIC. This license is only for the purpose of using the Product in the methods for which they were intended. This limited license does not include a license to use the Product for new product research or development, product manufacture, reverse-engineering, improvements to the Product technology or any other commercial purpose. Customer is not authorized to transfer this Product to any third party for any purpose whatsoever without the express written consent of HOLOGIC. Except as otherwise stated in this paragraph, no other license is granted expressly, impliedly or by estoppel. For information concerning the availability of additional licenses to practice the patented methodologies, contact:

Legal Department, Hologic, Inc., 250 Campus Drive, Marlborough, MA, 01752, (508) 263-2900.

This product may be covered by one or more U.S. patents identified at www.hologic.com/patents.

VIII. LIMITED PRODUCT WARRANTY

WARRANTIES: Equipment, Supplies, and Software are warranted to the original Customer to perform substantially in accordance with published Product Specifications for one (1) year starting from the date of Installation (if applicable) or from the date of Delivery, whichever occurs first. After-sale options and accessories are warranted for six (6) months, and x-ray tubes are warranted on a straight-line prorated basis as stated in the applicable Product Specification ("Warranty Period"). Replacement parts are warranted for the remainder of the Warranty Period or ninety (90) days from Delivery, whichever is longer. Consumable Supplies are warranted to conform to published specifications for a period ending on the expiration date shown on their respective packages. Services are warranted to be supplied in a workman-like manner. Hologic does not warrant that use of Products will be uninterrupted or error-free, or that Products will operate with non-Hologic authorized third-party products. HOLOGIC'S ENTIRE WARRANTY RESPONSIBILITY IS EXPRESSLY LIMITED TO REPAIR OR REPLACEMENT (AT HOLOGIC'S OPTION AND IN THE FORM ORIGINALLY SHIPPED) OF PRODUCT OR CORRECTION OF SERVICE SUBJECT TO ANY CLAIM, OR, AT HOLOGIC'S ELECTION, REPAYMENT OF, OR CREDITING CUSTOMER WITH, AN AMOUNT EQUAL TO THE HOLOGIC PRICE, FEE OR CHARGE THEREFORE. THE FOREGOING WARRANTIES ARE IN LIEU OF AND EXCLUDE ALL OTHER WARRANTIES NOT EXPRESSLY SET FORTH HEREIN, WHETHER EXPRESS OR IMPLIED BY OPERATION OF LAW OR OTHERWISE, INCLUDING BUT NOT LIMITED TO ANY IMPLIED WARRANTIES OF MERCHANTABILITY OR FITNESS FOR A PARTICULAR PURPOSE. SUCH LIMITED WARRANTY IS GIVEN SOLELY TO THE ORIGINAL CUSTOMER AND IS NOT GIVEN TO, NOR MAY IT BE RELIED UPON BY, ANY THIRD PARTY INCLUDING, WITHOUT LIMITATION, CUSTOMERS OF CUSTOMER. THIS WARRANTY IS VOID UPON TRANSFER OF PRODUCT BY CUSTOMER TO ANY ENTITY WHO HAS LESS THAN FIFTY (50) PERCENT OWNERSHIP IN THE PRODUCT. SOME STATES DO NOT ALLOW THE EXCLUSION OF IMPLIED WARRANTIES SO THE ABOVE EXCLUSIONS MAY NOT APPLY TO YOU. YOU MAY ALSO HAVE OTHER RIGHTS, WHICH VARY, FROM STATE TO STATE. These warranties do not apply to any item that is: (a) repaired, moved or altered other than by Hologic authorized service personnel; (b) subjected to physical (including thermal or electrical) abuse, stress, or misuse; (c) stored, maintained or operated in any manner inconsistent with applicable Hologic specifications or instructions; or (d) designated as supplied subject to a non-Hologic warranty or on a pre-release or "as-is" basis.

WARRANTY CLAIMS AND REMEDIES: In the event of any warranty claim, Hologic will replace with new or repaired items any Equipment part, Component, or Consumable Supply that is in breach of warranty, and will use reasonable efforts to promptly fix or provide a workaround for any Software defect or bug which prevents operation in substantial conformity with functional specifications. Alternatively, Hologic may elect to repay or credit to Customer an amount equal to the purchase price of the defective Equipment, component, Software, consumable supply, or Service. Items replaced shall become Hologic property. All claims shall be initiated by contacting Hologic within the applicable warranty period and thirty (30) days after discovery of the breach or non-conformity. Hologic must be given reasonable access and an opportunity to inspect all

associated materials. If Hologic and Customer are unable to settle any claim and Customer has not notified Hologic within one (1) year after the claim arises, Customer shall be barred from instituting any legal action thereafter. These remedies shall comprise Hologic's entire liability and Customer's exclusive remedy for breach of warranty and are in lieu of any other remedies at law or equity.

LIMIT OF LIABILITY: HOLOGIC SHALL NOT BE LIABLE FOR ANY SPECIAL, INCIDENTAL, PUNITIVE, EXEMPLARY OR CONSEQUENTIAL LOSSES, DAMAGES, OR EXPENSES (INCLUDING BUT NOT LIMITED TO LOSS OF PROFITS, DATA, OR USE), DIRECTLY OR INDIRECTLY ARISING FROM THE SALE, HANDLING, SERVICE OR USE OF PRODUCT ORDERED OR FURNISHED, OR FROM ANY CAUSE RELATING THERETO UNLESS EXPRESSLY AGREED TO BY THE PARTIES IN WRITING. EXCEPT FOR PERSONAL INJURY OR DEATH TO THE EXTENT RESULTING FROM HOLOGIC'S NEGLIGENT OR INTENTIONALLY WRONGFUL ACTS OR OMISSIONS, IN NO EVENT SHALL HOLOGIC BE LIABLE UNDER ANY LEGAL THEORY OR FOR ANY CAUSE WHATSOEVER, WHETHER BASED UPON WARRANTY, CONTRACT, TORT, NEGLIGENCE, OR OTHER THEORY, EVEN IF ADVISED OF THE POSSIBILITY THEREOF, FOR ANY AMOUNT IN EXCESS OF THE PRICE, FEE OR CHARGE THEREFORE RECEIVED BY HOLOGIC.

Hologic, Cleavase, Invader, Invader Plus, and Invader Call Reporter and associated logos, are trademarks and/or registered trademarks of Hologic, Inc. and/or its subsidiaries in the United States and/or other countries.

All other trademarks that may appear in this package insert are the property of their respective owners.

Some components of nucleic acid analysis, such as specific methods and compositions for manipulating or visualizing nucleic acids for analysis, may be covered by one or more patents owned by other parties. Similarly, nucleic acids containing specific nucleotide sequences may be patented. Making, using or selling such components or nucleic acids may require one or more licenses. Nothing in this document should be construed as an authorization or implicit license to make, use or sell any so covered component or nucleic acid under any such patents.

©2011-2017 Hologic, Inc. All rights reserved.
Part Number 15-3219, Revision 102
2017-07