

HOLOGIC[®]

Horizon Series Site Preparation Guide

October 2013

The information contained in this Manual is confidential and proprietary to Hologic, Inc. This information is provided only to authorized representatives of Hologic's customers, solely for the purpose of facilitating the use of Hologic's products. No information contained herein may be disclosed to any unauthorized person, for any purpose whatsoever without the written consent of Hologic, Inc.

The information in this document is subject to change without notice.

© Copyright 2000-2013 by Hologic, Inc. All rights reserved.

Horizon™ is a trademark of Hologic, Inc.

QDR® and the Hologic logo are registered trademarks of Hologic, Inc.

Printed in the U.S.A.

All trademarks, registered trademarks, and product names used within this document are the property of their respective owners.



Hologic, Inc.

35 Crosby Drive
Bedford, MA 01730
USA

Tel: (781) 999-7300

Fax: (781) 280-0669

Service: (800) 321-HOLX (321-4659)

User Support: (800) 321- HOLX (321-4659)



Hologic Europe

Hologic N. V.
Leuvensesteenweg 250A
1800 Vilvoorde
Belgium

Tel: 32.2.711.4680

Fax: 32.2.725.20



Introduction

This guide provides information for preparing the site for the delivery and installation of a QDR Series X-ray device.

The installation of an X-ray device at any site requires serious consideration regarding space and site planning. A correctly prepared site provides a comfortable working environment for the operator with proper access for the patient.

If you have specific questions or concerns, please contact Hologic Sales Administration Department at 781-999-7453 or Bed-SalesAdmin@hologic.com.

Room Requirements

The following figures show the minimum room dimensions for a QDR System:

Figure 1-1. Horizon A

Figure 1-2. Horizon W, Horizon Wi

Figure 1-3. Horizon C, Horizon Ci

A larger room and wider doorway, however, simplifies installation, use, and service.

You can fit a QDR System through a 76 cm (30 in.) wide doorway. A hallway at least 115 cm (45") wide simplifies and speeds up installation.

Note: The minimum room dimensions assume there are no obstructions or outcroppings within the room. It is the customer's responsibility to remove obstructions or outcroppings prior to the install date.

The QDR Series operator's console is connected to the scanner table by a 4.5m (15') cable.

Since the leakage and scatter radiation levels are low, you can place the operator's console in the same room with the QDR Series scanner. Additional shielding should not be required, however, state regulations may vary. Please discuss your particular state requirements with your radiation facility safety officer.

Note 1: When planning room layout, bear in mind that the signal and console power cables come out of the left rear corner of the scanner unit (facing the scanner) and plug into the operator's console.

Note 2: Optional 9m (30 ft) or 14m (45 ft) signal/console power cables are available by special order—at no additional charge.

Note 3: The system power cable comes out of the left rear corner of the scanner unit and plugs into a wall outlet. The length is 4.5m (15'). No other length is available.

The following table provides the weight, area, and floor loading specifications for the Horizon Series:

	Horizon C, Horizon Ci	Horizon W, Horizon Wi	Horizon A
Equipment Weight	311 kg 686 lb	311 kg 686 lb	347 kg 765 lb
Max. Patient Weight	204 kg 450 lb	204 kg 450 lb	204 kg 450 lb
Total Weight	515 kg 1136 lb	515 kg 1136 lb	551 kg 1215 lb
Area	1.9 m x 1.1 m 6.3 ft x 3.5 ft	1.9 m x 1.1 m 6.3 ft x 3.5 ft	1.9 m x 1.1 m 6.3 ft x 3.5 ft
Floor Loading	246 kg/m ² 51.5 lb/ft ²	246 kg/m ² 51.5 lb/ft ²	264 kg/m ² 55.1 lb/ft ²

The floor must be level to within 3 cm across 2m (1 in. across 6 ft). If carpeting is beneath the system, it should be low pile and anti-static.

If possible, allow clearance of at least a 5 cm (2 in.) plus the maximum tabletop extension for the -A model between the QDR System outer surfaces and the walls.

Temperature/Humidity Control

You can operate your QDR System at the following temperature and humidity levels:

- Temperature: 15° - 32° C (59° - 90° F)
- Humidity: 20 % - 80 % relative humidity, non-condensing

Heat Load

The Horizon A will add approximately 1500 watts (5120 BTU/hour) to the air conditioning load of the room in which it is installed.

The Horizon W, Wi, C and Ci will add approximately 1000 watts (3400 BTU/hour) to the air conditioning load of the room in which it is installed.

Power Requirements

The power requirements for all models of the QDR System are as follows:

VOLTAGE (volts)	FREQUENCY (Hz)	CURRENT (Amperes)	MAXIMUM APPARENT LINE RESISTANCE (ohms)
100	50/60	16.0	0.32
120 (Domestic)	50/60	14.0	0.32
230	50/60	8.0	1.28

Note: A dedicated, single-phase, grounded, electrical circuit is required for all models. It is the customer's responsibility to insure this outlet is available prior to the install date.

The system power cable comes out of the left rear corner of the scanner unit and plugs into a wall outlet. The length is 4.5m (15'). No other length is available.

Data Connection

There must be an active 10/100/1000 Ethernet connection within six feet (6') of the computer, without crossing doors or aisles. The connection should have access to the internet to allow activation of Microsoft products and to allow for future enhancements to Hologic service offerings.

Pre-Installation Questionnaire

A Pre-Installation Questionnaire must be completed and returned to Hologic before system delivery and installation can be scheduled.

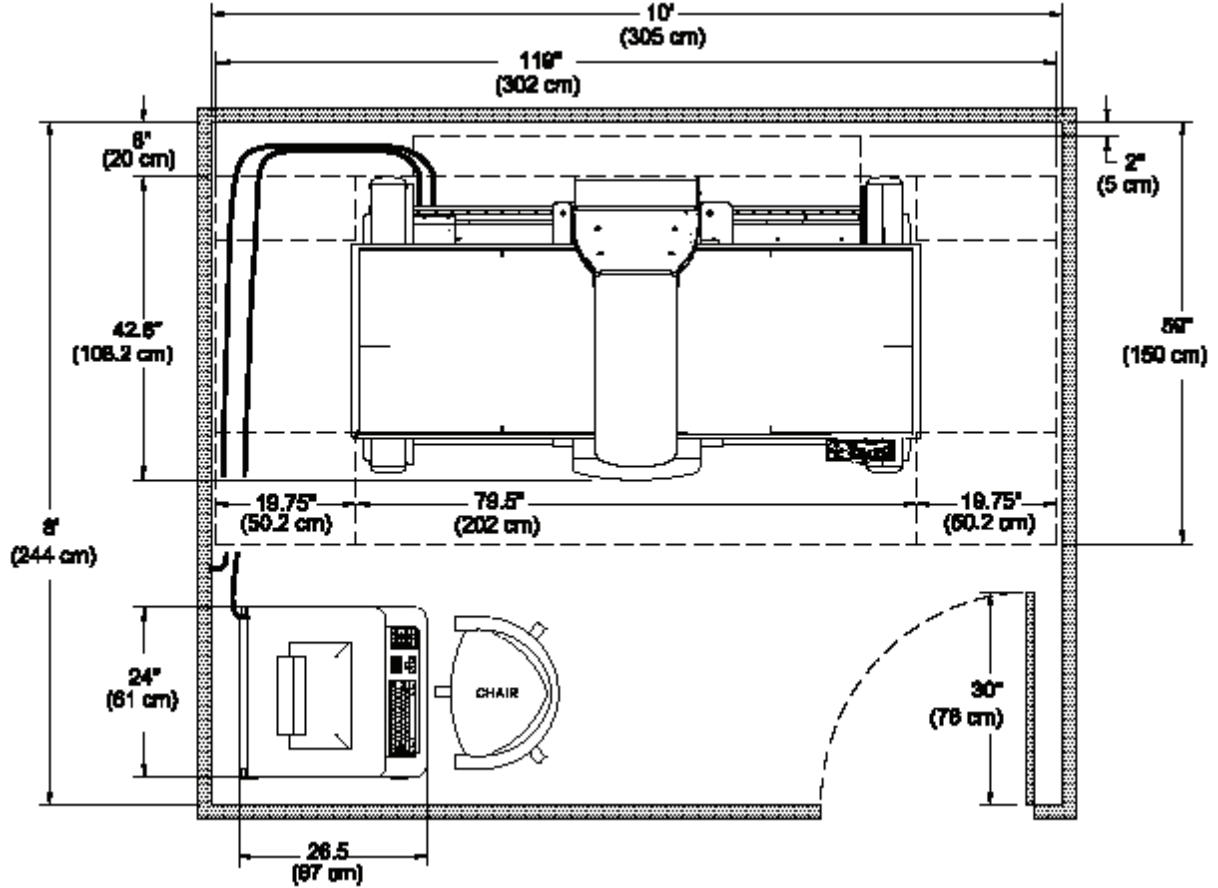


Figure 1-1. Horizon A

Note: For proper operation of the Horizon A the room dimensions must be at least 10 ft (305 cm) by 8 ft (244 cm).

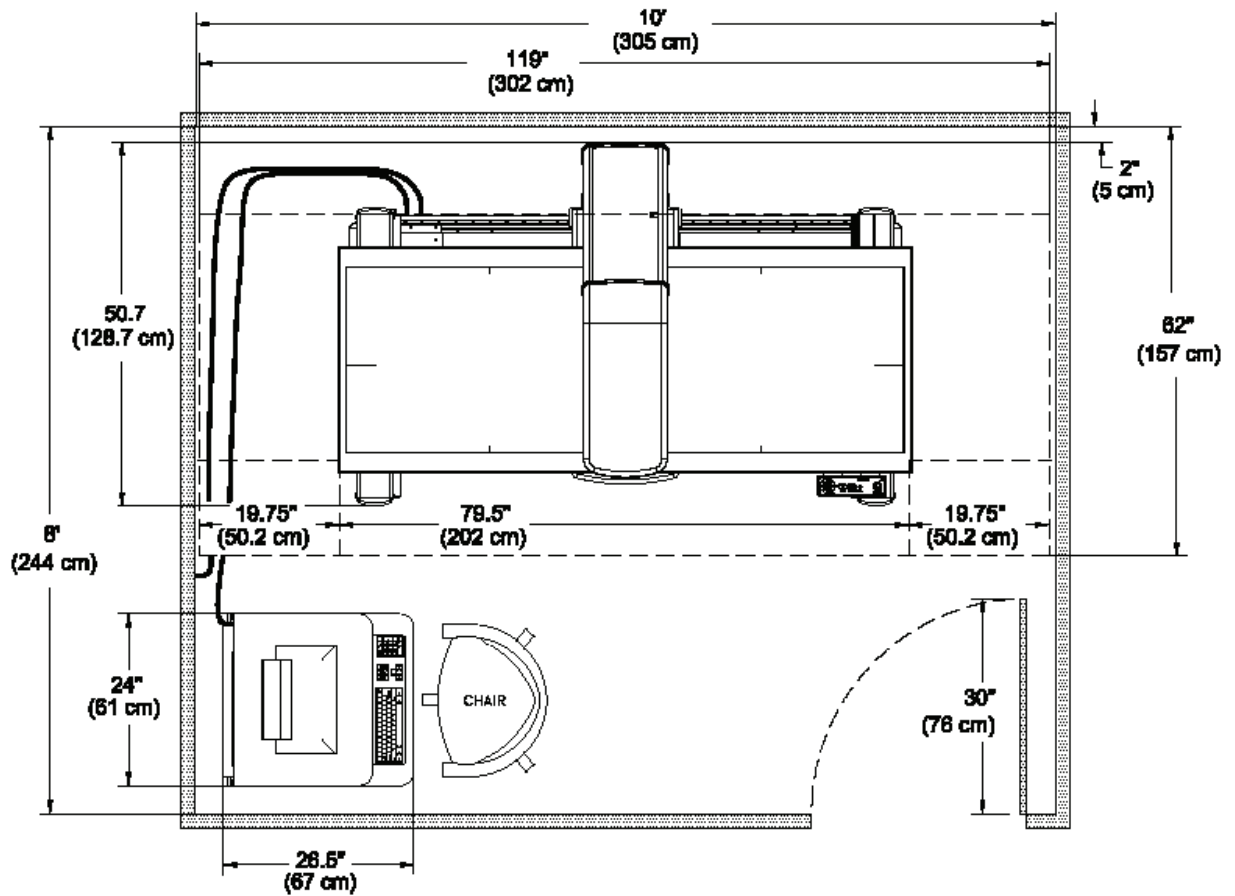


Figure 1-2. Horizon W, Horizon Wi

Note: For proper operation of the Horizon W or Wi the room dimensions must be at least 10 ft (305 cm) by 8 ft (244 cm).

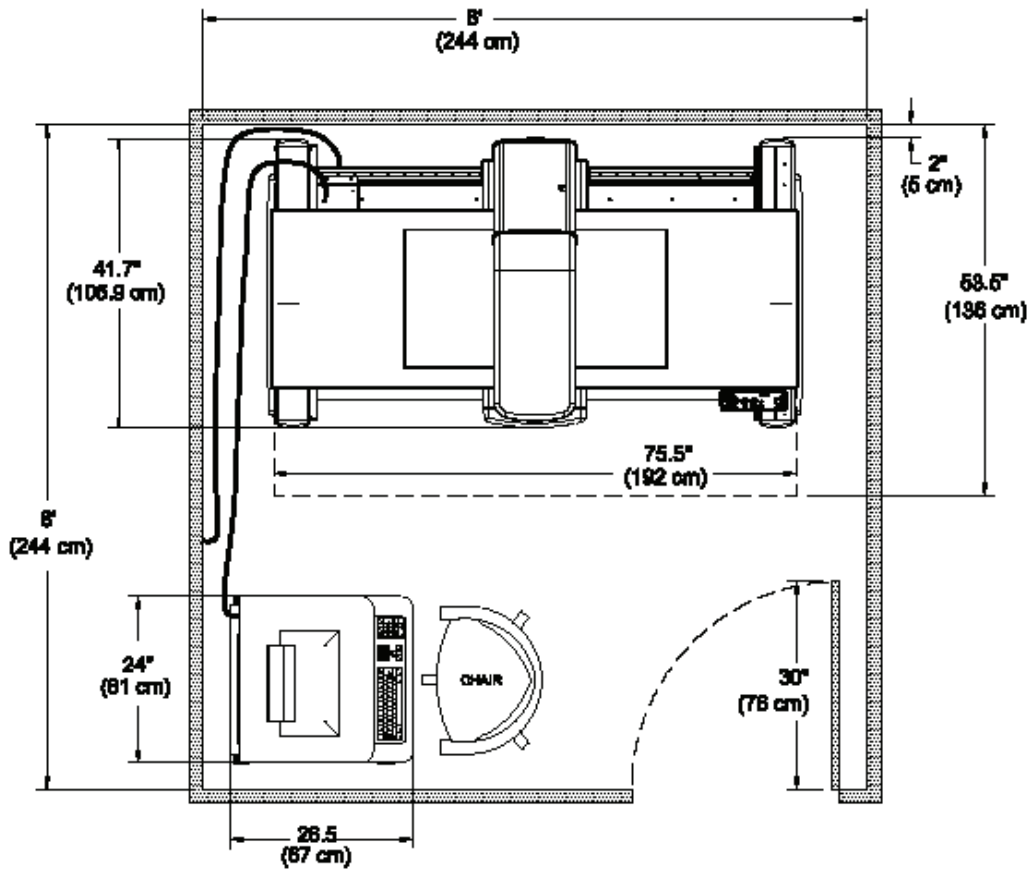


Figure 1-3. Horizon C, Horizon Ci

Note: For proper operation of the Horizon C or Ci the room dimensions must be at least 8 ft (244 cm) by 8 ft (244 cm).