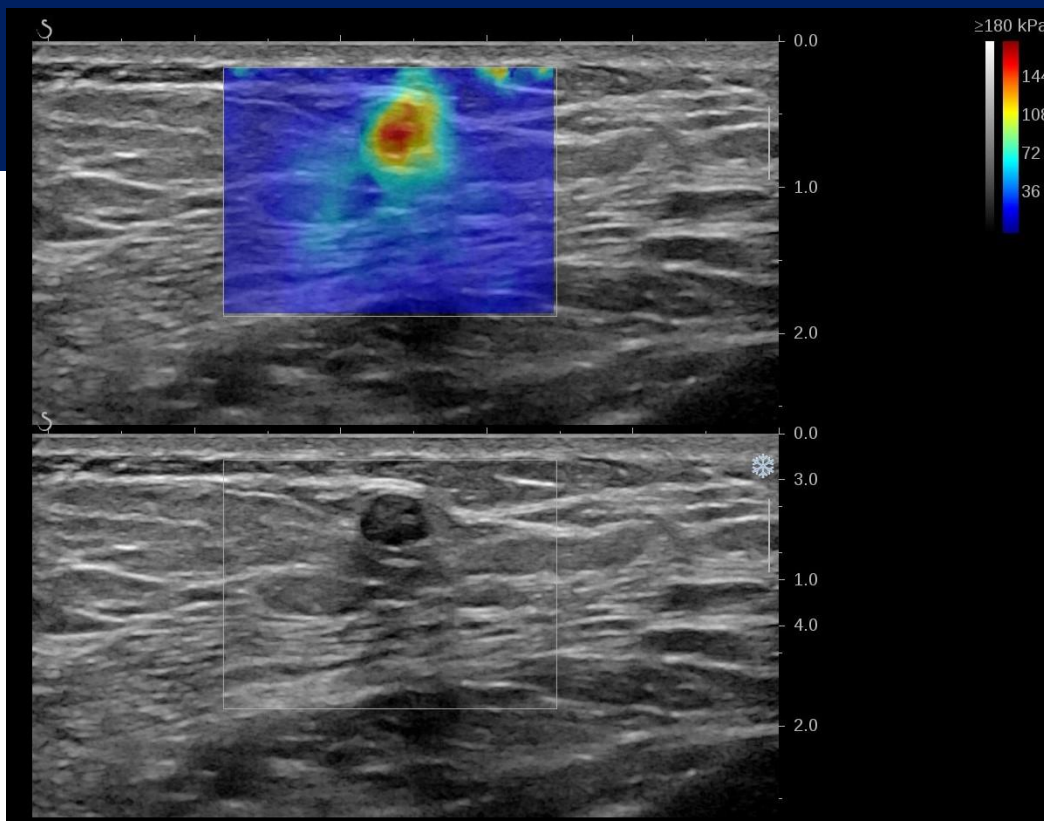


PEER REVIEWED ARTICLES

SHEARWAVE[™] ELASTOGRAPHY FOR BREAST IMAGING



1. **Diagnostic Accuracy of Four Levels of Manual Compression applied in supersonic Shear Wave Elastography of the Breast.** Chamming's F, Hangard C, Gennisson JL, Reinhold C, Fournier LS. doi: 10.1016/j.acra.2020.03.012
2. **Quantitative shear wave elastography in primary invasive breast cancers, based on collagen-S100A4 pathology, indicates axillary lymph node metastasis.** Wen X, Yu X, Tian Y, Liu Z, Cheng W, Li H, Kang J, Wei T, Yuan S, Tian J. Quant Imaging Med surg 2020;10(3):624-633. doi: 10.21037/qims.2020.02.18.
3. **Added Value of quantitative ultrasound and machine learning in BI-RADS 4-5 assessment of solid breast lesions.** Destremes F, Trop I, Allard L, Chayer B, Garcia-Duitama J, El Khoury M, Lalonde L, Cloutier G. Ultrasound Med bio. 2020 Feb;46(2):436-444. doi: 10.1016/j.ultrasmedbio.2019.10.024
4. **HIF-1 α , TWIST-1 and ITGB-1, associated with Tumor Stiffness, as Novel Predictive Markers for the Pathological Response to Neoadjuvant Chemotherapy in Breast Cancer.** Zhang J, Zhang S, Gao S, Ma Y, Tan X, Kang Y, Ren W. Cancer Management and Research 2020;12 2209-2222. doi: 10.2147/CMAR.S246349
5. **Value of Shear Wave Elastography for the differentiation of benign and malignant microcalcifications of the breast.** Chamming's F, Mesurolle B, Antonescu R, Aldis A, Kao E, Thériault M, Omeroglu A, Pinel-Giroux F, Seidler M, Solorzano S, Reinhold C, Gallix B. AJR Am J Roentgenol. 2019 Aug;213(2):W85-W92.
6. **Preoperative prediction of margin requirement following a core biopsy result suggestive of a phyllodes tumour.** Mberu V, Macaskill EJ, Purdie C, Evans A. Clinical Radiology, Volume 75, Issue 4, 319.e21 - 319.e27. doi: 10.1016/j.crad.2019.11.006.
7. **Utilizing size-based thresholds of stiffness gradient to reclassify BI-RADS category 3-4b lesions increases diagnostic performance.** Shang J, Ruan LT, Wang YY, Zhang XJ, Dang Y, Liu B, Wang WL, Song Y, Chang SJ. Clin Radiol. 2019 Apr;74(4):306-313. doi: 10.1016/j.crad.2019.01.004.
8. **Sonoelastographic features of high-risk breast lesions and ductal carcinoma in situ - A pilot study.** Crnogorac M, Ivanac G, Tomasović-Lončarić Č, Žic R, Kelava T, Brkljačić B. Acta Clin Croat. 2019 Mar;58(1):13-22. doi: 10.20471/acc.2019.58.01.02.
9. **BI-RADS 4 breast lesions: could multi-mode ultrasound be helpful for their diagnosis?** Liu G, Zhang MK, He Y, Liu Y, Li XR, Wang ZL. Gland Surg. 2019 Jun;8(3):258-270. doi: 10.21037/ga.2019.05.01.
10. **Grayscale ultrasound radiomic features and shear-wave elastography radiomic features in benign and malignant breast masses.** Youk JH, Kwak JY, Lee E, Son EJ, Kim JA. Ultraschall Med. 2019 Nov 8. doi: 10.1055/a-0917-6825.
11. **Visualization of the shear wave on gray-scale ultrasound: experience with a complex breast cyst.** Chiorean A, Pintican R, Duma MM, Fechete R, Feier D, Szep M, Dudea S. Med Ultrason 2020;0, 1-3. doi: 10.11152/mu-2264.
12. **Diagnostic performance of qualitative and quantitative shear wave elastography in differentiating malignant from benign breast masses, and association with the histological prognostic factors.** Suvannarerg V, Chitchumnong P, Apiwat W, Lertdamrongdej L, Tretipwanit N, Pisarnurakit P, Sitthinamsuwan P, Thiravit S, Muangsomboon K, Korpraphong P. Quant Imaging Med Surg. 2019 Mar;9(3):386-398.
13. **Can ultrasonographic vascular and elastographic features of invasive ductal breast carcinoma predict histologic aggressiveness?** Son MJ, Kim S, Jung HK, Ko KH, Koh JE, Park AY. Acad Radiol. 2019 Jul 9. pii: S1076-6332(19)30313-7.
14. **Dual-mode artificially intelligent diagnosis of breast tumours in shear wave elastography and B-mode ultrasound using deep polynomial networks.** Zhang Q, Song S, Xiao Y, Chen S, Shi J, Zheng H. Med Eng Phys. 2019 Feb;64:1-6.
15. **Breast hamartoma: Ultrasound, elastosonographic, and contrast enhanced ultrasound features.** Liu G, Wang ZL, Zhang MK, He Y, Liu Y. J Cancer Res Ther. 2019;15(4):864-870. doi: 10.4103/jcrt.JCRT_711_18.

16. **Clinical value of shear wave elastography added to targeted ultrasound (second look ultrasound) in the evaluation of breast lesions suspicious of malignancy detected on magnetic resonance imaging.** Au FW, Ghai S, Lu FI, Lu H. *J Ultrasound Med.* 2019 Sep;38(9):2395-2406. doi: 10.1002/jum.14936.
17. **A nomogram constructed using intraoperative ex vivo shear wave elastography precisely predicts metastasis of sentinel lymph nodes in breast cancer.** Bae SJ, Youk JH, Yoon CI, Park S, Cha CH, Lee HW, Ahn SG, Lee SA, Son EJ, Jeong J. *Eur Radiol.* 2019 Nov 6. doi: 10.1007/s00330-019-06473-5.
18. **Value of elastography in differentiating benign from malignant breast lesions keeping histopathology as gold standard.** Farooq F, Mubarak S, Shaukat, et al. *Cureus* 11(10): e5861. doi:10.7759/cureus.5861.
19. **Does Shear Wave Elastography Score Over Strain Elastography in Breast Masses or Vice Versa?** Singla V, Prakash A, Prabhakar N, Singh T, Bal A, Singh G, Khandelwal N. *Current Problems in Diagnostic Radiology* (2019), doi.org/10.1067/j.cpradiol.2019.02.
20. **Non-histopathological parameters associated with upgrade of breast tumours yielding a core biopsy report of histological grade 2 ductal no special type to grade 3 on excision.** Ahmeidat H, Purdie C, Jordan L, Fleming D, McCullough J, Evans A. *Eur J Surg Oncol.* 2018 Aug 7. pii: S0748-7983(18)31181-8.
21. **Comparison of peritumoral stromal tissue stiffness obtained by shear wave elastography between benign and malignant breast lesions.** Park HS, Shin HJ, Shin KC, Cha JH, Chae EY, Choi WJ, Kim HH. *Acta Radiol.* 2018 Oct;59(10):1168-1175. doi: 10.1177/0284185117753728.
22. **Determination of normal breast and areolar skin elasticity using shear wave elastography.** Şendur HN, Gültekin S, Salimli L, Cindil E, Cerit M, Şendur AB. *J Ultrasound Med.* 2019 Jul;38(7):1815-1822. doi: 10.1002/jum.14877.
23. **Confirmed value of shear wave elastography for ultrasound characterization of breast masses using a conservative approach in Chinese women: a large-size prospective multicenter trial.** Lin X, Chang C, Wu C, Chen Q, Peng Y, Luo B, Tang L, Li J, Zheng J, Zhou R, Cui G, Li A, Wang X, Qian L, Zhang J, Wen C, Gay J, Zhang H, Li A, Chen Y. *Cancer Manag Res.* 2018 Oct 11;10:4447-4458. doi: 10.2147/CMAR.S174690.
24. **A Prospective Two Center Study Comparing Breast Cancer Lesion Size Defined by 2D Shear Wave Elastography, B-Mode Ultrasound, and Mammography with the Histopathological Size.** Farrokh A, Treu L, Ohlinger R, Flieger C, Maass N, Schäfer FK. *Ultraschall Med.* 2018 Aug 20. doi: 10.1055/a-0661-5952.
25. **Predictors of Invasive Breast Cancer in Patients With Ductal Carcinoma In Situ in Ultrasound-Guided Core Needle Biopsy.** Shin YJ, Kim SM, Yun B, Jang M, Kim B, Lee SH. *J Ultrasound Med.* 2018 Aug 1. doi: 10.1002/jum.14722.
26. **Accuracy of tumor size measurement: comparison of B-mode ultrasound, strain elastography, and 2D and 3D shear wave elastography with histopathological lesion size.** Farrokh A, Maass N, Treu L, Heilmann T, Schäfer FK. *Acta Radiol.* 2018 Jul 25:284185118787354. doi: 10.1177/0284185118787354.
27. **A Radiomics Approach with CNN for Shear-wave Elastography Breast Tumor Classification.** Zhou Y, Xu J, Liu Q, Li C, Liu Z, Wang M, Zheng H, Wang S. *IEEE Trans Biomed Eng.* 2018 Jun 5. doi: 10.1109/TBME.2018.2844188.
28. **Breast mass characterization using shear wave elastography and ultrasound.** Hari S, Paul SB, Vidyasagar R, Dhamija E, Adarsh AD, Thulkar S, Mathur S, Sreenivas V, Sharma S, Srivastava A, Seenu V, Prashad R. *Diagn Interv Imaging.* 2018 Jul 10. pii: S2211-5684(18)30153-0. doi: 10.1016/j.diii.2018.06.002.
29. **Ex Vivo Shear-Wave Elastography of Axillary Lymph Nodes to Predict Nodal Metastasis in Patients with Primary Breast Cancer.** Bae SJ, Park JT, Park AY, Youk JH, Lim JW, Lee HW, Lee HM, Ahn SG, Son EJ, Jeong J. *J Breast Cancer.* 2018 Jun;21(2):190-196.
30. **Identification of pathological complete response after neoadjuvant chemotherapy for breast cancer: comparison of greyscale ultrasound, shear wave elastography, and MRI.** Evans A, Whelehan P, Thompson A, Purdie C, Jordan L, Macaskill J, Henderson S, Vinnicombe S. *Clin Radiol.* 2018 Jul 3. pii: S0009-9260(18)30223-X. doi: 10.1016/j.crad.2018.05.030.

31. **Correlation between elastic parameters and collagen fibre features in breast lesions.** Shi XQ, Li J, Qian L, Xue X, Li J, Wan W. Clin Radiol. 2018 Jun;73(6):595.e1-595.e7.
32. **Three-dimensional shear wave elastography for differentiation of breast lesions: An initial study with quantitative analysis using three orthogonal planes.** Wang Q. Clin Hemorheol Microcirc. 2018 May 25. doi: 10.3233/CH-180388.
33. **The efficacy of added shear wave elastography (SWE) in breast screening for women with inconsistent mammography and conventional ultrasounds (US).** Pu H, Zhang XL, Xiang LH, Zhang JL, Xu G, Liu H, Tang GY, Zhao BH, Wu R. Clin Hemorheol Microcirc. 2018 May 19. doi: 10.3233/CH-180398.
34. **Pre-operative stromal stiffness measured by shear wave elastography is independently associated with breast cancer-specific survival.** Evans A, Sim YT, Pourreynon C, Thompson A, Jordan L, Fleming D, Purdie C, Macaskill J, Vinnicombe S, Pharoah P. Breast Cancer Res Treat. 2018 Jun 1. doi: 10.1007/s10549-018-4836-5.
35. **Diagnostic performances of shear-wave elastography and B-mode ultrasound to differentiate benign and malignant breast lesions: the emphasis on the cutoff value of qualitative and quantitative parameters.** Song EJ, Sohn YM, Seo M. Clin Imaging. 2018 May 4;50:302-307.
36. **Comparison of strain and shear wave elastography for qualitative and quantitative assessment of breast masses in the same population.** Kim HJ, Kim SM, Kim B, La Yun B, Jang M, Ko Y, Lee SH, Jeong H, Chang JM, Cho N. Sci Rep. 2018 Apr 18;8(1):6197.
37. **Computer aided prediction model for axillary lymph node metastasis in breast cancer using tumor morphological and textural features on ultrasound.** Moon WK, Chen IL, Yi A, Bae MS, Shin SU, Chang RF. Comput Methods Programs Biomed. 2018 Aug;162:129-137.
38. **Differentiation of benign and metastatic axillary lymph nodes in breast cancer: additive value of shear wave elastography to B-mode ultrasound.** Seo M, Sohn YM. Clin Imaging. 2018 Apr 14;50:258-263.
39. **Ultrasound shear wave elastography of breast lesions: correlation of anisotropy with clinical and histopathological findings.** Chen YL, Gao Y, Chang C, Wang F, Zeng W, Chen JJ. Cancer Imaging. 2018 Apr 5;18(1):11.
40. **Breast lesions diagnosed by ultrasound-guided core needle biopsy: Can shearwave elastography predict histologic upgrade after surgery or vacuum assisted excision?** Sohn YM, Seo M. Clin Imaging. 2018 Mar 3;49:150-155.
41. **Benefit of Shear-wave Elastography in the differential diagnosis of breast lesion: a diagnostic meta-analysis.** Luo J, Cao Y, Nian W, Zeng X, Zhang H, Yue Y, Yu F. Med Ultrason. 2018 Feb 4;1(1):43-49.
42. **Breast lesion classification based on supersonic shear-wave elastography and automated lesion segmentation from B-mode ultrasound images.** Yu Y, Xiao Y, Cheng J, Chiu B. Comput Biol Med. 2017 Dec 15;93:31-46.
43. **Shear-Wave Elastography quantitative assessment of the male breast: added value to distinguish benign and malignant palpable masses.** Crombe A, Hurtevent-Labrot G, Asad-Syed M, Palussiere J, MacGrogan G, Kind M, Ferron S. Br J Radiol. 2017 Nov 16:20170676. doi: 10.1259/bjr.20170676.
44. **Shear wave elastography for characterization of breast lesions: Shearlet transform and local binary pattern histogram techniques.** Acharya UR, Ng WL, Rahmat K, Sudarshan VK, Koh JEW, Tan JH, Hagiwara Y, Gertych A, Fadzli F, Yeong CH, Ng KH. Comput Biol Med. 2017 Oct 2;91:13-20.
45. **Evaluation of Screening US-detected Breast Masses by Combined Use of Elastography and Color Doppler US with B-Mode US in Women with Dense Breasts: A Multicenter Prospective Study.** Lee SH, Chung J, Choi HY, Choi SH, Ryu EB, Ko KH, Koo HR, Park JS, Yi A, Youk JH, Son EJ, Chu AJ, Chang JM, Cho N, Jang MJ, Kook SH, Cha ES, Moon WK. Radiology. 2017 Nov;285(2):660-669.
46. **Three-dimensional versus two-dimensional shear-wave elastography: Associations of mean elasticity values with prognostic factors and tumor subtypes of breast cancer.** Kang HJ, Kim JY, Lee NK, Lee JW, Song YS, Park SY, Shin JK. Clin Imaging. 2017 Oct 12;48:79-85.
47. **First step to facilitate long-term and multi-centre studies of shear wave elastography in solid breast lesions using a computer-assisted algorithm.** Skerl K, Cochran S, Evans A. Int J Comput Assist Radiol Surg. 2017 Sep;12(9):1533-1542.

48. **Shear wave elastography in the diagnosis of breast non-mass lesions: factors associated with false negative and false positive results.** Park SY, Choi JS, Han BK, Ko EY, Ko ES. *Eur Radiol.* 2017 Sep;27(9):3788-3798.
49. **Prediction of Pathological Complete Response to Neoadjuvant Chemotherapy for Primary Breast Cancer Comparing Interim Ultrasound, Shear Wave Elastography and MRI.** Evans A, Whelehan P, Thompson A, Purdie C, Jordan L, Macaskill J, Waugh S, Fuller-Pace F, Brauer K, Vinnicombe S. *Ultraschall Med.* 2017 Sep 21. doi: 10.1055/s-0043-111589.
50. **Pre-Operative Evaluation of Axillary Lymph Node Status in Patients with Suspected Breast Cancer Using Shear Wave Elastography.** Youk JH, Son EJ, Kim JA, Gweon HM. *Ultrasound Med Biol.* 2017 Aug;43(8):1581-1586.
51. **Reproducibility and diagnostic performance of shear wave elastography in evaluating breast solid mass.** Hong S, Woo OH, Shin HS, Hwang SY, Cho KR, Seo BK. *Clin Imaging.* 2017 Jul - Aug;44:42-45.
52. **Shear Wave Elastography for Surgically Verified Breast Papillary Lesions: Is It Effective for Differentiation Between Benign and Malignant Lesions?** Choi HJ, Ko KH, Jung HK. *J Ultrasound Med.* 2017 Jul 14. doi: 10.1002/jum.14293.
53. **Kindlin-2 could influence breast nodule elasticity and improve lymph node metastasis in invasive breast cancer.** Xue X, Li J, Wan W, Shi X, Zheng Y. *Sci Rep.* 2017 Jul 28;7(1):6753.
54. **Computer-aided tumor diagnosis using shear wave breast elastography.** Moon WK, Huang YS, Lee YW, Chang SC, Lo CM, Yang MC, Bae MS, Lee SH, Chang JM, Huang CS, Lin YT, Chang RF. *Ultrasonics.* 2017 Jul;78:125-133.
55. **Data mining framework for breast lesion classification in shear wave ultrasound: A hybrid feature paradigm.** Acharya UR, Ng WL, Rahmat K, Sudarshan VK, Koh JEW, Tan JH, Hagiwara Y, Yeong CH, Ng KH. *Biomed Signal Processing Control.* 2017;33:400-10.
56. **Comparison of strain and shear-wave ultrasonic elastography in predicting the pathological response to neoadjuvant chemotherapy in breast cancers.** Ma Y, Zhang S, Li J, Li J, Kang Y, Ren W. *Eur Radiol.* 2017 Jun;27(6):2282-2291.
57. **Combination of shear-wave elastography and color Doppler: Feasible method to avoid unnecessary breast excision of fibroepithelial lesions diagnosed by core needle biopsy.** Kim GR, Choi JS, Han BK, Ko EY, Ko ES, Hahn SY. *PLoS One.* 2017 May 4;12(5):e0175380.
58. **Comparison of 3D and 2D shear-wave elastography for differentiating benign and malignant breast masses: focus on the diagnostic performance.** Choi HY, Sohn YM, Seo M. *Clin Radiol.* 2017 May 16. pii: S0009-9260(17)30164-2. doi: 10.1016/j.crad.2017.04.009.
59. **Comparing Performance of Combinations of Shear Wave Elastography and B-Mode Ultrasound in Diagnosing Breast Masses: Is It Influenced by Mass Size?** Cong R, Li J, Wang X. *Ultrasound Med Biol.* 2017 Oct;43(10):2133-2143.
60. **Shear-wave elastography in breast ultrasonography: the state of the art.** Youk JH, Gweon HM, Son EJ. *Ultrasonography.* 2017 Apr 5. doi: 10.14366/usg.17024.
61. **Differential Diagnosis of Breast Category 3 and 4 Nodules Through BI-RADS Classification in Conjunction with Shear Wave Elastography.** Wang M, Yang Z, Liu C, Yan J, Zhang W, Sun J, Cui G. *Ultrasound Med Biol.* 2017 Mar;43(3):601-606.
62. **Breast Lesion Elastography Region of Interest Selection and Quantitative heterogeneity: A Systematic Review and Meta-Analysis.** Blank MAB, Antaki JF. *Ultrasound Med Biol.* 2017 Feb;43(2):387-397.
63. **Performance of shear-wave elastography for breast masses using different region-of-interest (ROI) settings.** Youk JH, Son EJ, Han K, Gweon HM, Kim JA. *Acta Radiol.* 2017 Jan 1:284185117735562. doi: 10.1177/0284185117735562.
64. **A new qualitative pattern classification of shear wave elastography for solid breast mass evaluation.** Cong R, Li J, Guo S. *Eur J Radiol.* 2017 Feb;87:111-119.

65. **Impact of region of interest (ROI) size on the diagnostic performance of shear wave elastography in differentiating solid breast lesions.** Moon JH, Hwang JY, Park JS, Koh SH, Park SY. *Acta Radiol.* 2017 Jan 1;284185117732097.
66. **Shear-Wave Elastography: Could it be Helpful for the Diagnosis of Non-Mass-Like Breast Lesions?** Wang ZL, Li Y, Wan WB, Li N, Tang J. *Ultrasound Med Biol.* 2017 Jan;43(1):83-90.
67. **Application of 3D and 2D quantitative shear wave elastography (SWE) to differentiate between benign and malignant breast masses.** Tian J, Liu Q, Wang X, Xing P, Yang Z, Wu C. *Sci Rep.* 2017 Jan 20;7:41216.
68. **Two-dimensional shear wave elastography of breast lesions: Comparison of two different systems.** Ren WW, Li XL, He YP, Li DD, Wang D, Zhao CK, Bo XW, Liu BJ, Yue WW, Xu HX. *Clin Hemorheol Microcirc.* 2017;66(1):37-46.
69. **Shear-Wave Elastography Features of Primary Non-Hodgkin's Lymphoma of the Breast: A Case Report and Literature Review.** Kim Y, Ko KH, Jung HK, Lee HJ. *J Clin Diagn Res.* 2016 Dec;10(12):TD01-TD03.
70. **3 Dimensional shear wave elastography of breast lesions: Added value of color patterns with emphasis on crater sign of coronal plane.** Chen YL, Chang C, Zeng W, Wang F, Chen JJ, Qu N. *Medicine (Baltimore)* 2016 Sep; 95(39): e4877.
71. **Combination of shear wave elastography and Ki-67 index as a novel predictive modality for the pathological response to neoadjuvant chemotherapy in patients with invasive breast cancer.** Ma Y, Zhang S, Zang L, Li J, Li J, Kang Y, Ren W. *Eur J Cancer.* 2016 Dec;69:86-101.
72. **Quantitative evaluation of peripheral tissue elasticity for ultrasound-detected breast lesions.** Xiao Y, Yu Y, Niu L, Qian M, Deng Z, Qiu W, Zheng H. *Clin Radiol.* 2016 Sep;71(9):896-904.
73. **Early Evaluation of Relative Changes in Tumor Stiffness by Shear Wave Elastography Predicts the Response to Neoadjuvant Chemotherapy in Patients With Breast Cancer.** Jing H, Cheng W, Li ZY, Ying L, Wang QC, Wu T, Tian JW. *J Ultrasound Med.* 2016 Aug;35(8):1619-27.
74. **Stiffness at shear-wave elastography and patient presentation predicts upgrade at surgery following an ultrasound-guided core biopsy diagnosis of ductal carcinoma in situ.** Evans A, Purdie CA, Jordan L, Macaskill EJ, Flynn J, Vinnicombe S. *Clin Radiol.* 2016 Aug 5. pii: S0009-9260(16)30267-7. doi: 10.1016/j.crad.2016.07.004.
75. **Sonoelastography in the evaluation of capsule formation after breast augmentation - preliminary results from a follow-up study.** Paczkowska K, Rzymiski P, Kubasik M, Opala T. *Arch Med Sci.* 2016 Aug 1;12(4):793-8.
76. **Shear-wave elastography and greyscale assessment of palpable probably benign masses: is biopsy always required?** Giannotti E, Vinnicombe S, Thomson K, McLean D, Purdie C, Jordan L, Evans A. *Br J Radiol.* 2016 Jun;89(1062):20150865.
77. **Lymphangiogenesis in Breast Cancer Correlates with Matrix Stiffness on Shear-Wave Elastography.** Cha YJ, Youk JH, Kim BG, Jung WH, Cho NH. *Yonsei Med J.* 2016 May;57(3):599-605.
78. **Shear wave elastography of breast cancer: Sensitivity according to histological type in a large cohort.** Evans A, Sim YT, Thomson K, Jordan L, Purdie C, Vinnicombe SJ. *Breast.* 2016 Apr;26:115-8.
79. **Breast Lesions: Quantitative Diagnosis Using Ultrasound Shear Wave Elastography-A Systematic Review and Meta-Analysis.** Liu B, Zheng Y, Huang G, Lin M, Shan Q, Lu Y, Tian W, Xie X. *Ultrasound Med Biol.* 2016 Apr;42(4):835-47.
80. **Shear-wave sonoelastographic features of invasive lobular breast cancers.** Brkljačić B, Divjak E, Tomasović- Lončarić C, Tešić V, Ivanac G. *Croat Med J.* 2016;57:42-50
81. **Prediction of invasive breast cancer using shear-wave elastography in patients with biopsy-confirmed ductal carcinoma in situ.** Bae JS, Chang JM, Lee SH, Shin SU, Moon WK. *Eur Radiol.* 2016 Apr 16.
82. **Elastographic features of triple negative breast cancers.** Džoić Dominković M, Ivanac G, Kelava T, Brkljačić B. *Eur Radiol.* 2016 Apr;26(4):1090-7.

83. **Shearwave Elastography Increases Diagnostic Accuracy in Characterization of Breast Lesions.** Ng WL, Rahmat K, Fadzli F, Rozalli FI, Mohd-Shah MN, Chandran PA, Westerhout CJ, Vijayanathan A, Abdul Aziz YF. *Medicine (Baltimore)*. 2016 Mar;95(12):e3146.
84. **Deep learning based classification of breast tumors with shear-wave elastography.** Zhang Q, Xiao Y, Dai W, Suo J, Wang C, Shi J, Zheng H. *Ultrasonics*. 2016 Dec;72:150-7. doi: 10.1016/j.ultras.2016.08.004.
85. **Clinical application of a color map pattern on shear-wave elastography for invasive breast cancer.** Lee S, Jung Y, Bae Y. *Surg Oncol*. 2016 Mar;25(1):44-8.
86. **Ex Vivo Assessment of Sentinel Lymph Nodes in Breast Cancer Using Shear Wave Elastography.** Kilic F, Velidedeoglu M, Ozturk T, Kandemirli SG, Dikici AS, Er ME, Aydogan F, Kantarci F, Yilmaz MH. *J Ultrasound Med*. 2016 Feb;35(2):271-7.
87. **Additional diagnostic value of shear-wave elastography and color Doppler US for evaluation of breast non-mass lesions detected at B-mode US.** Choi JS, Han BK, Ko EY, Ko ES, Shin JH, Kim GR. *Eur Radiol*. 2016 Jan 19.
88. **Anisotropy of Solid Breast Lesions in 2D Shear Wave Elastography is an Indicator of Malignancy.** Skerl K, Vinnicombe S, Thomson K, McLean D, Giannotti E, Evans A. *Acad Radiol*. 2016 Jan;23(1):53-61.
89. **Factors influencing the stiffness of fibroadenomas at shear wave elastography.** Elseedawy M, Whelehan P, Vinnicombe S, Thomson K, Evans A. *Clin Radiol*. 2016 Jan;71(1):92-5.
90. **In Vivo Quantification of the Nonlinear Shear Modulus in Breast Lesions: Feasibility Study.** Bernal M, Chamings F, Couade M, Bercoff J, Tanter M, Gennisson JL. *IEEE Trans Ultrason Ferroelectr Freq Control*. 2016 Jan;63(1):101-109.
91. **Quantitative breast lesion classification based on multichannel distributions in shear-wave imaging.** Lo CM, Lai YC, Chou YH, Chang RF. *Comput Methods Programs Biomed*. 2015 Dec;122(3):354-61.
92. **Determination of the Elasticity of Breast Tissue during the Menstrual Cycle Using Real-Time Shear Wave Elastography.** Li X, Wang JN, Fan ZY, Kang S, Liu YJ, Zhang YX, Wang XM. *Ultrasound Med Biol*. 2015 Dec;41(12):3140-7.
93. **Lesion stiffness measured by shear-wave elastography: Preoperative predictor of the histologic underestimation of US-guided core needle breast biopsy.** Park AY, Son EJ, Kim JA, Han K, Youk JH. *Eur J Radiol*. 2015 Dec;84(12):2509-14.
94. **Influence of region of interest size and ultrasound lesion size on the performance of 2D shear wave elastography (SWE) in solid breast masses.** Skerl K, Vinnicombe S, Giannotti E, Thomson K, Evans A. *Clin Radiol*. 2015 Dec;70(12):1421-7.
95. **Shear-Wave Elastography for the Detection of Residual Breast Cancer After Neoadjuvant Chemotherapy.** Lee SH, Chang JM, Han W, Moon HG, Koo HR, Gweon HM, Kim WH, Noh DY, Moon AW. *Ann Surg Oncol*. 2015 Dec;22 Suppl 3:376-84.
96. **Shear Wave Elastography: Is It a Valuable Additive Method to Conventional Ultrasound for the Diagnosis of Small (≤ 2 cm) Breast Cancer?** Kim SJ, Ko KH, Jung HK, Kim H. *Medicine (Baltimore)*. 2015 Oct;94(42):e1540.
97. **Shear Wave Elastography (SWE): An Analysis of Breast Lesion Characterization in 83 Breast Lesions.** Feldmann A, Langlois C, Dewailly M, Martinez EF, Boulanger L, Kerdraon O, Faye N. *Ultrasound Med Biol*. 2015 Oct;41(10):2594-604.
98. **False positive or negative results of shear-wave elastography in differentiating benign from malignant breast masses: analysis of clinical and ultrasonographic characteristics.** Kim MY, Choi N, Yang JH, Yoo YB, Park KS. *Acta Radiol*. 2015 Oct;56(10):1155-62.
99. **Diagnostic performance and color overlay pattern in shear wave elastography (SWE) for palpable breast mass.** Park J, Woo OH, Shin HS, Cho KR, Seo BK, Kang EY. *Eur J Radiol*. 2015 Oct;84(10):1943-8.
100. **Quantitative Lesion-to-Fat Elasticity Ratio Measured by Shear-Wave Elastography for Breast Mass: Which Area Should Be Selected as the Fat Reference?** Youk JH, Son EJ, Gweon HM, Han KH, Kim JA. *PLoS One*. 2015 Sep 14;10(9):e0138074.

101. **Quantitative Maximum Shear-Wave Stiffness of Breast Masses as a Predictor of Histopathologic Severity.** Berg WA, Mendelson EB, Cosgrove DO, Doré CJ, Gay J, Henry JP, Cohen-Bacrie C. *AJR Am J Roentgenol.* 2015 Aug;205(2):448-55.
102. **Role of shear-wave elastography (SWE) in complex cystic and solid breast lesions in comparison with conventional ultrasound.** Lee BE, Chung J, Cha ES, Lee JE, Kim JH. *Eur J Radiol.* 2015 Jul;84(7):1236-41.
103. **Shear-wave elastography in invasive ductal carcinoma: correlation between quantitative maximum elasticity value and detailed pathological findings.** Cho EY, Ko ES, Han BK, Kim RB, Cho S, Choi JS, Hahn SY. *Acta Radiol.* 2015 Jun 12.
104. **Changes in the elasticity of fibroadenoma during the menstrual cycle determined by real-time sonoelastography.** Kiliç F, Kayadibi Y, Kocael P, Velidedeoglu M, Bas A, Bakan S, Aydoğan F, Karatas A, Yılmaz MH. *Eur J Radiol.* 2015 Jun;84(6):1044-8.
105. **Value of shear-wave elastography in the diagnosis of symptomatic invasive lobular breast cancer.** Sim YT, Vinnicombe S, Whelehan P, Thomson K, Evans A. *Clin Radiol.* 2015 Jun;70(6):604-9.
106. **Can continuous scans in orthogonal planes improve diagnostic performance of shear wave elastography for breast lesions?** Yang P, Peng Y, Zhao H, Luo H, Jin Y, He Y. *Technol Health Care.* 2015 Jun 17;23 Suppl 2:S293-300.
107. **Performance of Ultrasonic Shear Wave Elastography in Assessing Benign and Malignant Breast Lesions.** Xian-Quan S, Jun-Lai LI, Qiu-Yang LI, Yan H, Wen-Bo W, Jie T. *Zhongguo Yi Xue Ke Xue Yuan Xue Bao.* 2015 Jun;37(3):294-9.
108. **Shear-wave elastography and immunohistochemical profiles in invasive breast cancer: evaluation of maximum and mean elasticity values.** Ganau S, Andreu FJ, Escribano F, Martín A, Tortajada L, Villajos M, Baré M, Teixidó M, Ribé J, Sentís M. *Eur J Radiol.* 2015 Apr;84(4):617-22.
109. **A set of shear wave elastography quantitative parameters combined with ultrasound BI-RADS to assess benign and malignant breast lesions.** Shi XQ, Li JL, Wan WB, Huang Y. *Ultrasound Med Biol.* 2015 Apr;41(4):960-6.
110. **Feasibility of Imaging and Treatment Monitoring of Breast Lesions with Three-Dimensional Shear Wave Elastography.** Athanasiou A, Latorre-Ossa H, Criton A, Tardivon A, Gennisson JL, Tanter M. *Ultraschall Med.* 2017 Jan;38(1):51-59.
111. **Quantitative shear wave elastography: correlation with prognostic histologic features and immunohistochemical biomarkers of breast cancer.** Au FW, Ghai S, Lu FI, Moshonov H, Crystal P. *Acad Radiol.* 2015 Mar;22(3):269-77.
112. **Relationship between elasticity and collagen fiber content in breast disease: a preliminary report.** Wang ZL, Sun L, Li Y, Li N. *Ultrasonics.* 2015 Mar;57:44-9.
113. **Role of shear wave sonoelastography in differentiation between focal breast lesions.** Dobruch-Sobczak K, Nowicka A. *Ultrasound Med Biol.* 2015 Feb;41(2):366-74.
114. **Quantification of elastic heterogeneity using contourlet-based texture analysis in shear-wave elastography for breast tumor classification.** Zhang Q, Xiao Y, Chen S, Wang C, Zheng H. *Ultrasound Med Biol.* 2015 Feb;41(2):588-600.
115. **Can breast elastography change our strategies? Technology, impact and limitations.** Balu-Maestro C, Caramella T. *Gynecol Obstet Fertil.* 2015 Jan;43(1):71-7.
116. **Shear-wave elastography contributes to accurate tumour size estimation when assessing small breast cancers.** Mullen R, Thompson JM, Moussa O, Vinnicombe S, Evans A. *Clin Radiol.* 2014 Dec;69(12):1259-63.
117. **Usefulness of ultrasound elastography in reducing the number of breast imaging reporting and data system category 3 lesions on ultrasonography.** Cho N, Lim J, Moon WK. *Ultrasonography.* 2014 Apr;33(2):98-104.
118. **Predicting prognostic factors of breast cancer using shear wave elastography.** Choi WJ, Kim HH, Cha JH, Shin HJ, Kim H, Chae EY, Hong MJ. *Ultrasound Med Biol.* 2014 Feb;40(2):269-74. doi: 10.1016/j.ultrasmedbio.2013.09.028.

119. **Diagnostic performances of shear-wave elastography for identification of malignant breast lesions: a meta-analysis.** Chen L, He J, Liu G, Shao K, Zhou M, Li B, Chen X. *Jpn J Radiol.* 2014 Oct;32(10):592-9.
120. **Diagnostic performance of shear wave elastography of the breast according to scanning orientation.** Kim S, Choi S, Choi Y, Kook SH, Park HJ, Chung EC. *J Ultrasound Med.* 2014 Oct;33(10):1797-804.
121. **Shear-wave elastography for breast masses: local shear wave speed (m/sec) versus Young modulus (kPa).** Youk JH, Son EJ, Park AY, Kim JA. *Ultrasonography.* 2014 Jan;33(1):34-9. doi: 10.14366/usg.13005.
122. **Added Value of Shear-Wave Elastography for Evaluation of Breast Masses Detected with Screening US Imaging.** Lee SH, Chang JM, Kim WH, Bae MS, Seo M, Koo HR, Chu AJ, Gweon HM, Cho N, Moon WK. *Radiology.* 2014 Oct;273(1):61-9.
123. **Use of shear wave elastography to differentiate benign and malignant breast lesions.** Çebi Olgun D, Korkmazer B, Kılıç F, Dikici AS, Velidedeoğlu M, Aydoğan F, Kantarcı F, Yılmaz MH. *Diagn Interv Radiol.* 2014 May-Jun;20(3):239-44.
124. **Comparison of Strain and Shear Wave Elastography for the Differentiation of Benign From Malignant Breast Lesions, Combined With B-mode Ultrasonography: Qualitative and Quantitative Assessments.** Youk JH, Son EJ, Gweon HM, Kim H, Park YJ, Kim JA. *Ultrasound Med Biol.* 2014 Oct;40(10):2336-44.
125. **Ultrasonography of the Breast.** Brkljaci B, Ivanac G. *Ultrasound Clin* 9 (2014) 391–427. doi.org/10.1016/j.cult.2014.03.003.
126. **Diagnostic performance of quantitative shear wave elastography in the evaluation of solid breast masses: determination of the most discriminatory parameter.** Au FW, Ghai S, Moshonov H, Kahn H, Brennan C, Dua H, Crystal P. *AJR Am J Roentgenol.* 2014 Sep;203(3):W328-36.
127. **Shear wave elastography contribution in ultrasound diagnosis management of breast lesions.** Klotz T, BouSSION V, Kwiatkowski F, Dieu-de Fraissinette V, Bailly-Glatre A, Lemery S, Boyer L. *Diagn Interv Imaging.* 2014 Sep;95(9):813-24.
128. **Addition of Shear-Wave Elastography during Second-Look MR Imaging-directed Breast US: Effect on Lesion Detection and Biopsy Targeting.** Plecha DM, Pham RM, Klein N, Coffey A, Sattar A, Marshall H. *Radiology.* 2014 Sep;272(3):657-64.
129. **Breast lesions: evaluation with shear wave elastography, with special emphasis on the "stiff rim" sign.** Zhou J, Zhan W, Chang C, Zhang X, Jia Y, Dong Y, Zhou C, Sun J, Grant EG. *Radiology.* 2014 Jul;272(1):63-72.
130. **Ductal Carcinoma In Situ Detected by Shear Wave Elastography within a Fibroadenoma.** Kılıç F, Ustabaşoğlu FE, Samancı C, Baş A, Velidedeoglu M, Kılıçaslan T, Aydogan F, Yılmaz MH. *J Breast Cancer.* 2014 Jun;17(2):180-3.
131. **Intra-observer reproducibility and diagnostic performance of breast shear-wave elastography in Asian women.** Park HY, Han KH, Yoon JH, Moon HJ, Kim MJ, Kim EK. *Ultrasound Med Biol.* 2014 Jun;40(6):1058-64.
132. **What are the characteristics of breast cancers misclassified as benign by quantitative ultrasound shear wave elastography?** Vinnicombe SJ, Whelehan P, Thomson K, McLean D, Purdie CA, Jordan LB, Hubbard S, Evans AJ. *Eur Radiol.* 2014 Apr;24(4):921-6.
133. **Shear-wave elastographic features of breast cancers: comparison with mechanical elasticity and histopathologic characteristics.** Lee SH, Moon WK, Cho N, Chang JM, Moon HG, Han W, Noh DY, Lee JC, Kim HC, Lee KB, Park IA. *Invest Radiol.* 2014 Mar;49(3):147-55.
134. **Computer-aided diagnosis based on quantitative elastographic features with supersonic shear wave imaging.** Xiao Y, Zeng J, Niu L, Zeng Q, Wu T, Wang C, Zheng R, Zheng H. *Ultrasound Med Biol.* 2014 Feb;40(2):275-86.
135. **Potential role of shear-wave ultrasound elastography for the differential diagnosis of breast non-mass lesions: preliminary report.** Ko KH, Jung HK, Kim SJ, Kim H, Yoon JH. *Eur Radiol.* 2014 Feb;24(2):305-11.

136. **Does shear wave ultrasound independently predict axillary lymph node metastasis in women with invasive breast cancer?** Evans A, Rauchhaus P, Whelehan P, Thomson K, Purdie CA, Jordan LB, Michie CO, Thompson A, Vinnicombe S. *Breast Cancer Res Treat.* 2014 Jan;143(1):153-7.
137. **Two-View versus Single-View Shear-Wave Elastography: Comparison of Observer Performance in Differentiating Benign from Malignant Breast Masses.** Lee SH, Cho N, Chang JM, Koo HR, Kim JY, Kim WH, Bae MS, Yi A, Moon WK. *Radiology.* 2014 Feb;270(2):344-53.
138. **Shear wave elastography of tumour growth in a human breast cancer model with pathological correlation.** Chamming's F, Latorre-Ossa H, Le Frère-Belda MA, Fitoussi V, Quibel T, Assayag F, Marangoni E, Autret G, Balvay D, Pidial L, Gennisson JL, Tanter M, Cuenod CA, Clément O, Fournier LS. *Eur Radiol.* 2013 Aug;23(8):2079-86.
139. **Qualitative pattern classification of shear wave elastography for breast masses: How it correlates to quantitative measurements.** Yoon JH, Ko KH, Jung HK, Lee JT. *Eur J Radiol.* 2013 Dec;82(12):2199-204.
140. **Correlation between imaging and molecular classification of breast cancers.** Boisserie-Lacroix M, Hurtevent-Labrot G, Ferron S, Lippa N, Bonnefoi H, Mac Grogan G. *Diagnostic and Interventional Imaging* (2013) 94, 1069—1080.
141. **Clinical application of qualitative assessment for breast masses in shear-wave elastography.** Gweon HM, Youk JH, Son EJ, Kim JA. *Eur J Radiol.* 2013 Nov;82(11):e680-5.
142. **Can shear-wave elastography predict response to neoadjuvant chemotherapy in women with invasive breast cancer?** Evans A, Armstrong S, Whelehan P, Thomson K, Rauchhaus P, Purdie C, Jordan L, Jones L, Thompson A, Vinnicombe S. *Br J Cancer.* 2013 Nov 26;109(11):2798-802.
143. **Diagnostic value of commercially available shear-wave elastography for breast cancers: integration into BI-RADS classification with subcategories of category 4.** Youk JH, Gweon HM, Son EJ, Han KH, Kim JA. *Eur Radiol.* 2013 Oct;23(10):2695-704.
144. **Quantitative analysis of peri-tumor tissue elasticity based on shear-wave elastography for breast tumor classification.** Xiao Y, Zeng J, Qian M, Zheng R, Zheng H. *Conf Proc IEEE Eng Med Biol Soc.* 2013;2013:1128-31.
145. **Performance of shear wave elastography for differentiation of benign and malignant solid breast masses.** Li G, Li DW, Fang YX, Song YJ, Deng ZJ, Gao J, Xie Y, Yin TS, Ying L, Tang KF. *PLoS One.* 2013 Oct 18;8(10):e76322.
146. **Stiffness of tumours measured by shear-wave elastography correlated with subtypes of breast cancer.** Chang JM, Park IA, Lee SH, Kim WH, Bae MS, Koo HR, Yi A, Kim SJ, Cho N, Moon WK. *Eur Radiol.* 2013 Sep;23(9):2450-8.
147. **Shear-wave elastography in the diagnosis of solid breast masses: what leads to false-negative or false-positive results?** Yoon JH, Jung HK, Lee JT, Ko KH. *Eur Radiol.* 2013 Sep;23(9):2432-40.
148. **Diagnostic performance of qualitative shear-wave elastography according to different color map opacities for breast masses.** Kim H, Youk JH, Gweon HM, Kim JA, Son EJ. *Eur J Radiol.* 2013 Aug;82(8):e326-31.
149. **Role of supersonic shear wave imaging quantitative elastography (SSI) in differentiating benign and malignant solid breast masses.** Awad. 2013 44, 681-685. doi: 10.1016/j.ejrn.2013.04.001
150. **Comparison of shear-wave and strain ultrasound elastography in the differentiation of benign and malignant breast lesions.** Chang JM, Won JK, Lee KB, Park IA, Yi A, Moon WK. *AJR Am J Roentgenol.* 2013 Aug;201(2):W347-56.
151. **Diagnostic performances of shear wave elastography: which parameter to use in differential diagnosis of solid breast masses?** Lee EJ, Jung HK, Ko KH, Lee JT, Yoon JH. *Eur Radiol.* 2013 Jul;23(7):1803-11.
152. **Breast ultrasonography: state of the art.** Hooley RJ, Scoutt LM, Philpotts LE. *Radiology.* 2013 Sep;268(3):642-59. doi: 10.1148/radiol.13121606.
153. **Validation of intra and interobserver reproducibility of shearwave elastography: Phantom study.** Mun HS, Choi SH, Kook SH, Choi Y, Jeong WK, Kim Y. *Ultrasonics.* 2013 Jul;53(5):1039-43.

154. **Three-dimensional shear-wave elastography for differentiating benign and malignant breast lesions: comparison with two-dimensional shear-wave elastography.** Youk JH, Gweon HM, Son EJ, Chung J, Kim JA, Kim EK. *Eur Radiol.* 2013 Jun;23(6):1519-27.
155. **ShearWave™ Elastography BE1 multinational breast study: additional SWE™ features support potential to downgrade BI-RADS®-3 lesions.** Schäfer FK, Hooley RJ, Ohlinger R, Hahne U, Madjar H, Svensson WE, Balu-Maestro C, Juhan V, Athanasiou A, Mundinger A, Order B, Locatelli M, Cosgrove D, Wolf OJ, Henry JP, Moutfi M, Gay JM, Cohen-Bacrie C. *Ultraschall Med.* 2013 Jun;34(3):254-9.
156. **Study of quantitative elastography with supersonic shear imaging in the diagnosis of breast tumours.** Wang ZL, Li JL, Li M, Huang Y, Wan WB, Tang J. *Radiol Med.* 2013 Jun;118(4):583-90.
157. **Differentiation of benign from malignant solid breast masses: comparison of two-dimensional and three-dimensional shear-wave elastography.** Lee SH, Chang JM, Kim WH, Bae MS, Cho N, Yi A, Koo HR, Kim SJ, Kim JY, Moon WK. *Eur Radiol.* 2013 Apr;23(4):1015-26.
158. **Visually assessed colour overlay features in shear-wave elastography for breast masses: quantification and diagnostic performance.** Gweon HM, Youk JH, Son EJ, Kim JA. *Eur Radiol.* 2013 Mar;23(3):658-63.
159. **Shear-wave elastography of invasive breast cancer: correlation between quantitative mean elasticity value and immunohistochemical profile.** Youk JH, Gweon HM, Son EJ, Kim JA, Jeong J. *Breast Cancer Res Treat.* 2013 Feb;138(1):119-26.
160. **Elastography in the assessment of sentinel lymph nodes prior to dissection.** Tourasse C, Dénier JF, Awada A, Gratadour AC, Nessah-Bousquet K, Gay J. *Eur J Radiol.* 2012 Nov;81(11):3154-9.
161. **Differentiating benign from malignant solid breast masses: value of shear wave elastography according to lesion stiffness combined with greyscale ultrasound according to BI-RADS classification.** Evans A, Whelehan P, Thomson K, Brauer K, Jordan L, Purdie C, McLean D, Baker L, Vinnicombe S, Thompson A. *Br J Cancer.* 2012 Jul 10;107(2):224-9.
162. **Invasive breast cancer: relationship between shear-wave elastographic findings and histologic prognostic factors.** Evans A, Whelehan P, Thomson K, McLean D, Brauer K, Purdie C, Baker L, Jordan L, Rauchhaus P, Thompson A. *Radiology.* 2012 Jun;263(3):673-7.
163. **Breast elasticity: Principles, technique, results: an update and overview of commercially available software.** Balleyguier C, Canale S, Ben Hassen W, Vielh P, Bayou EH, Mathieu MC, Uzan C, Bourquier C, Dromain C. *Eur J Radiol.* 2013 Mar;82(3):427-34. doi: 10.1016/j.ejrad.2012.03.001.
164. **Radiological features of triple-negative breast cancers (73 cases).** Boisserie-Lacroix M, Mac Grogan G, Debled M, Ferron S, Asad-Syed M, Brouste V, Mathoulin-Pelissier S, Hurtevent-Labrot G. *Diagn Interv Imaging.* 2012 Mar;93(3):183-90.
165. **Effects of precompression on elasticity imaging of the breast: development of a clinically useful semiquantitative method of precompression assessment.** Barr RG, Zhang Z. *J Ultrasound Med.* 2012 Jun;31(6):895-902.
166. **Shear wave elastography for breast masses is highly reproducible.** Cosgrove DO, Berg WA, Doré CJ, Skyba DM, Henry JP, Gay J, Cohen-Bacrie C; the BE1 Study Group. *Eur Radiol.* 2012 May;22(5):1023-32.
167. **Shear wave imaging of the breast: still on the learning curve.** Barr RG. *J Ultrasound Med.* 2012 Mar;31(3):347-50.
168. **Shear-wave Elastography Improves the Specificity of Breast US: The BE1 Multinational Study of 939 Masses.** Berg WA, Cosgrove DO, Doré CJ, Schäfer FKW, Svensson WE, Hooley RJ, Ohlinger R, Mendelson EB, Balu-Maestro C, Locatelli M, Tourasse C, Cavanaugh BC, Juhan V, Stavros AT, Tardivon A, Gay J, Henry JP, Cohen-Bacrie C, and the BE1 Investigators. *Radiology.* 2012 Feb;262(2):435-49.
169. **Influence of sex hormones in women on breast elasticity measured by shear wave sonoelastography-a cross-sectional study.** Rzymiski PT, Wilczak M, Opala T. *Gynecol Endocrinol.* 2012 Jan;28(1):46-50.
170. **Correlation between insulin resistance and breast elasticity heterogeneity measured by shear wave elastography in premenopausal women - a pilot study.** Rzymiski P, Wysocki PJ, Kycler W, Opala T. *Arch Med Sci.* 2011 Dec 31;7(6):1017-22.

171. **Is the shear wave sonographic elastography correlated with pain after breast augmentation with silicone implants an indication of inflammatory activity?** A preliminary report. Rzymiski P, Kubasik M, Gaca M, Opala T. *Wideochir Inne Tech Malo Inwazyjne*. 2011 Dec;6(4):217-25.
172. **Use of shear wave sonoelastography in capsular contracture before and after secondary surgery: report of two cases.** Rzymiski P, Kubasik M, Opala T. *J Plast Reconstr Aesthet Surg*. 2011 Dec;64(12):e309-12.
173. **Pattern classification of ShearWave™ Elastography images for differential diagnosis between benign and malignant solid breast masses.** Tozaki M, Fukuma E. *Acta Radiol*. 2011 Dec 1;52(10):1069-75.
174. **Changes in ultrasound shear wave elastography properties of normal breast during menstrual cycle.** Rzymiski P, Skórzewska A, Opala T. *Clin Exp Obstet Gynecol*. 2011;38(2):137-42.
175. **Clinical application of shear wave elastography (SWE) in the diagnosis of benign and malignant breast diseases.** Chang JM, Moon WK, Cho N, Yi A, Koo HR, Han W, Noh DY, Moon HG, Kim SJ. *Breast Cancer Res Treat*. 2011 Aug;129(1):89-97.
176. **Morphological analysis of breast cystic lesions in shear wave elastography.** Rzymiski P, Opala T. *Wspolczesna Onkol* 2011; 15 (4): 208-212.
177. **Factors influencing breast elasticity measured by the ultrasound Shear Wave elastography - preliminary results.** Rzymiski P, Skórzewska A, Skibińska-Zielińska M, Opala T. *Arch Med Sci*. 2011 Feb;7(1):127-33.
178. **Quantitative shear wave ultrasound elastography: initial experience in solid breast masses.** Evans A, Whelehan P, Thomson K, McLean D, Brauer K, Purdie C, Jordan L, Baker L, Thompson A. *Breast Cancer Res*. 2010;12(6):R104.
179. **Breast Lesions: Quantitative Elastography with Supersonic Shear Imaging—Preliminary Results.** Athanasiou A, Tardivon A, Tanter M, Sigal-Zafrani B, Bercoff J, Deffieux T, Gennisson JL, Fink M, Neuenschwander S. *Radiology*. 2010 Jul;256(1):297-303.
180. **Quantitative Assessment of Breast Lesion Viscoelasticity: Initial Clinical Results Using Supersonic Shear Imaging.** Tanter M, Bercoff J, Athanasiou A, Deffieux T, Gennisson JL, Montaldo G, Muller M, Tardivon A, Fink M. *Ultrasound Med Biol*. 2008 Sep;34(9):1373-86.
181. **In Vivo Breast Tumor Detection using Transient Elastography.** Bercoff J, Chaffai S, Tanter M, Sandrin L, Catheline S, Fink M, Gennisson JL, Meunier M. *Ultrasound Med Biol*. 2003 Oct;29(10):1387-96.

Hologic Proprietary Information

MISC-06500 Rev.002 (11/20) Hologic Inc. All rights reserved. Hologic, SuperSonic, SuperSonic Aixplorer MACH, ShearWave, TriVu, SonicPad, and UltraFast, are trademarks and/or registered trademarks of Hologic, Inc., and or its subsidiaries in the United States and other countries. SuperSonic MACH 30 system was previously known as Aixplorer MACH 30 system. This information is intended for medical professionals in the U.S. and other markets and it not intended as a product solicitation or promotion where such activities are prohibited. Because Hologic materials are distributed through websites, eBroadcasts and tradeshow, it is not always possible to control where such materials appear. For specific information on what products are available for sale in a particular country, please contact your local Hologic representative or write to womenshealth@Hologic.com. This is a general information tool for medical professionals and is not a complete representation of the product(s)' Instruction for Use (IFU) or Package Insert, and it is the medical professionals' responsibility to read and follow the IFU or Package Insert. The information provided may suggest a particular technique or protocol however it is the sole responsibility of the medical professional to determine which technique or protocol is appropriate. At all times, clinicians remain responsible for utilizing sound patient evaluation and selection practices, and for complying with applicable local, state, and federal rules and regulations regarding accreditation, anesthesia, reimbursement, and all other aspects of in-office procedures. In no event shall Hologic be liable for damages of any kind resulting from your use of the information presented. All other trademarks, registered trademarks, and product names are the property of their respective owners. Views and opinions expressed herein by third parties are theirs alone and do not necessarily reflect those of Hologic. Indications for Use: The SuperSonic Imagine Aixplorer MACH® range ultrasound diagnostic systems and transducers, are intended for general purpose pulse echo ultrasound imaging, soft tissue elasticity imaging and Doppler fluid flow analysis of the human body. The Aixplorer MACH® ultrasound diagnostic systems are indicated for use in the following applications, for imaging and measurement of anatomical structures: Abdominal, Small Organs, Musculoskeletal, Superficial Musculoskeletal, Vascular, Peripheral Vascular, Intraoperative, OB-GYN, Pelvic, Pediatric, Transrectal, Transvaginal, Urology, Neonatal/Adult Cephalic and Non-invasive Cardiac. It is intended for use by licensed personnel qualified to direct the use of the medical ultrasound devices. CE certificate no. 26415, FDA cleared K180572. Contact Hologic at 1.800.442.9892 or visit www.hologic.com.

MKG.EC.335/ MAY 2020