

# Biopsy Site Marking Solutions

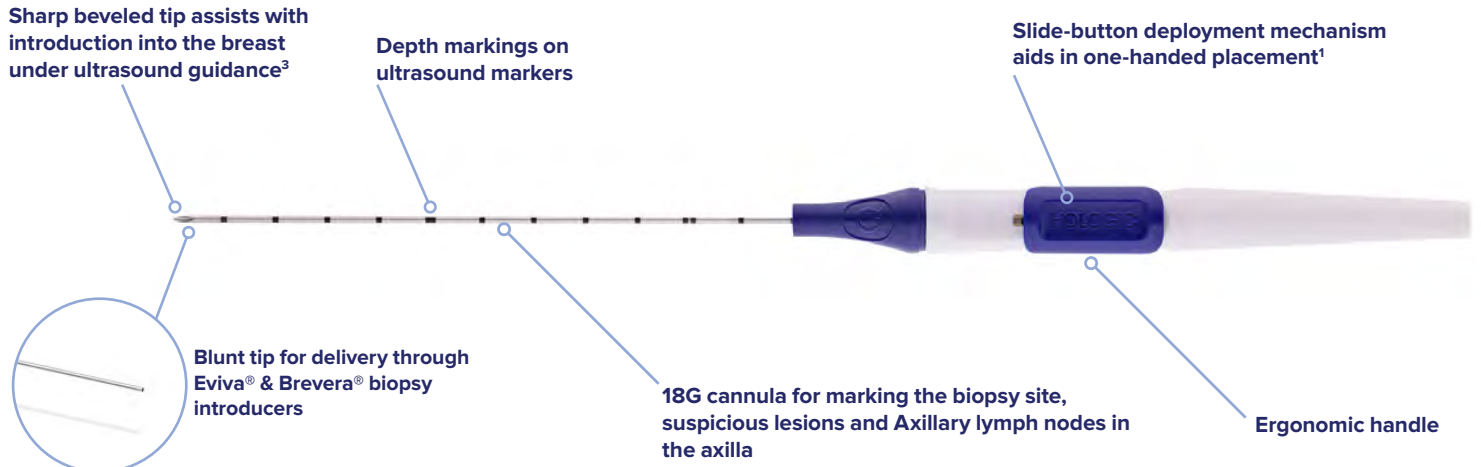
Options for every modality.



Hologic is dedicated to advances in medical technologies that contribute to **long, healthy lives for women**. We bring imaging and intervention together, delivering a continuum of care options for screening, diagnosis and treatment. In the field of breast biopsy, we will continue to work with physicians to discover and deliver more **compassionate and effective solutions for women**.



# Tumark<sup>®</sup> Tissue Markers



## Available Shapes



Tumark Professional Q deploying



Blunt tip deployment  
\*not available for all shapes



### Visibility

Tumark Professional Q & U markers are constructed of sand-blasted nitinol, designed to provide visibility in ultrasound

Visible upon deployment under Ultrasound and Mammography.



### Intelligent design

Intelligent design provides tissue fixation

Non-resorbing material expands into marker shape upon deployment

Six distinct shapes for easy identification between biopsy sites

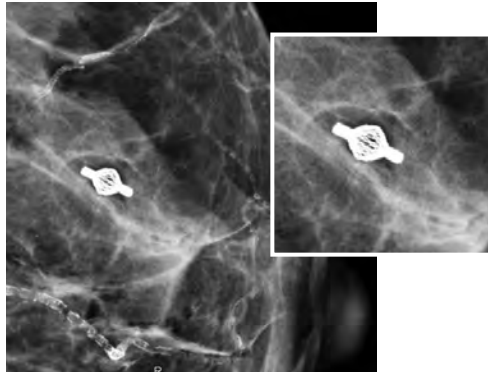


### Single-handed operation

Ergonomic handle designed for single-handed operation.

# Clinical Images\*

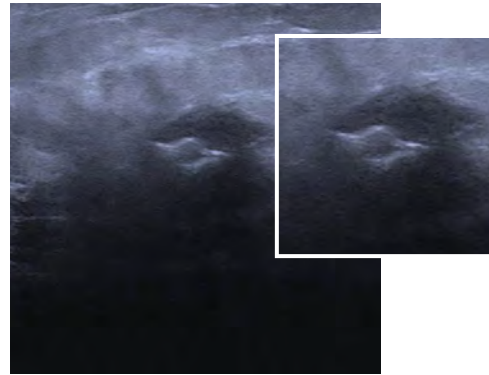
## Tumark Marker Under Mammography



**Tumark Vision marker**

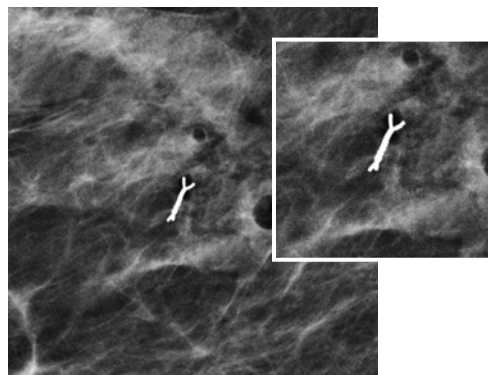
*Image courtesy of Dr. Stoeblen, Essen, Germany*

## Tumark Marker Under Ultrasound



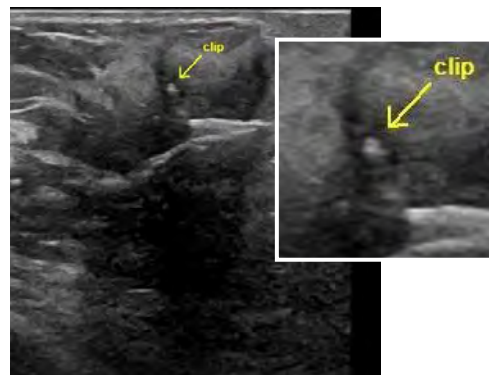
**Tumark Vision marker**

*Image courtesy of Dr. Stoeblen, Essen, Germany*



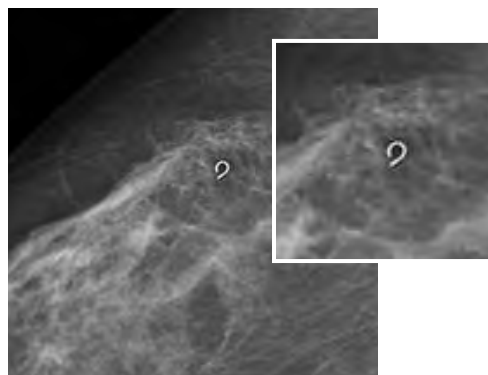
**Tumark X marker**

*Image courtesy of Dr. Lashonda Soma, Grand Forks, ND, USA*



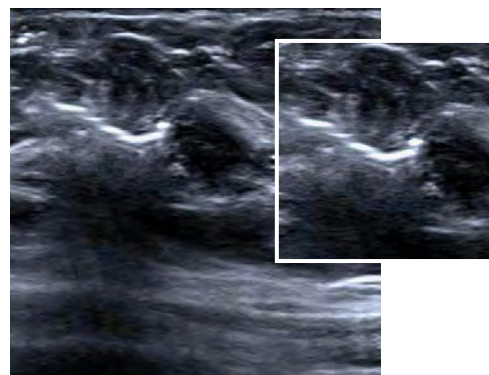
**Tumark X marker**

*Image courtesy of Dr. Lashonda Soma, Grand Forks, ND, USA*



**Tumark Q marker**

*Image courtesy of Somatex Medical Technologies*



**Tumark Q marker**

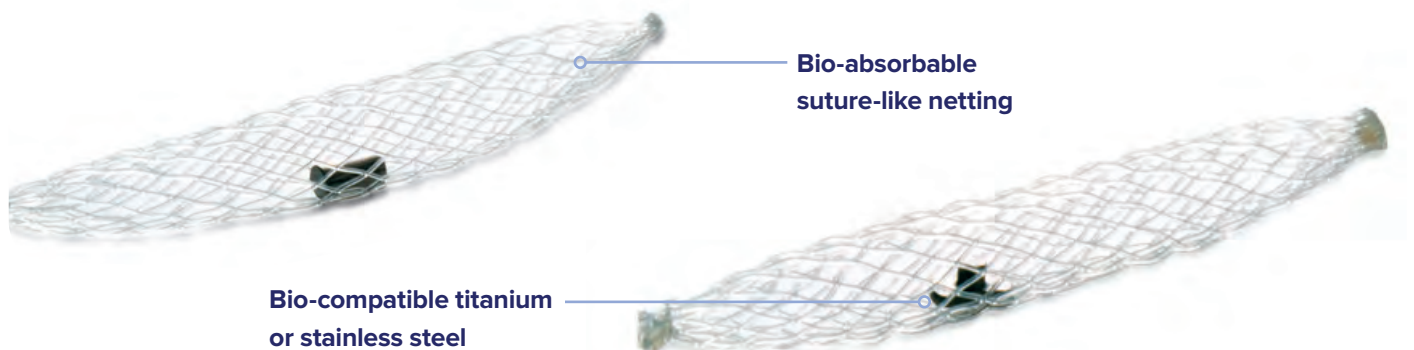
*Image courtesy of Somatex Medical Technologies*

\*Images under magnification not actual size. Please note IFU for exact specifications.

# SecurMark® biopsy site markers — Ultrasound visibility with multiple shapes

The SecurMark® family of biopsy site markers provides excellent site marking solutions.

SecurMark® biopsy site markers are comprised of two components: the permanent marker is made of bio-compatible titanium or stainless steel, while the outer material consists of bio-absorbable suture-like netting that is designed to minimize movement within the biopsy cavity and enhance ultrasound visualization. SecurMark site markers are available in five distinct shapes to allow for multi-site identification.



## SecurMark Biopsy Site Markers

### SecurMark marker for ATEC® breast biopsy system

- Features side deployment delivery system with a flexible cannula.
- For use with ATEC handpieces in stereotactic or ultrasound procedures.

### SecurMark marker for Celero® biopsy device and SecurMark Ultrasound

- Features end deployment using a rigid device with a hub and a beveled tip for access to the biopsy site.
- Can be used with or without an introducer.
- For use with the Celero breast biopsy device and the Sertera biopsy device.

### SecurMark marker for Eviva® and Brevera® systems

- Utilizes a rigid end-deploy delivery system that requires no pull-back for deployment.
- Part of the Eviva integrated stereotactic solution for accurate delivery.

### SecurMark marker for MRI

- Utilizes a rigid-end-deploy device for an integrated MRI solution.
- Permanent component options allow for a wide array of artifact.

## SecurMark Titanium Options

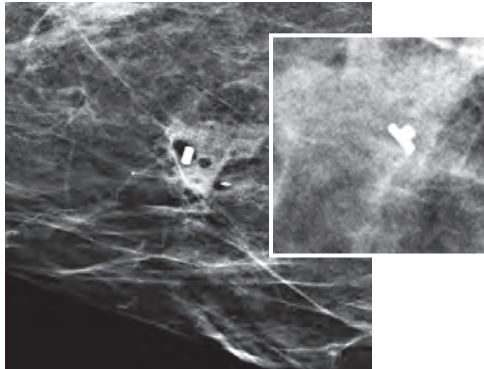
The SecurMark titanium options feature permanent markers made of bio-compatible titanium with the outer layer comprised of bio-absorbable suture-like netting. The titanium markers are available in two distinct shapes for multi-site marking.



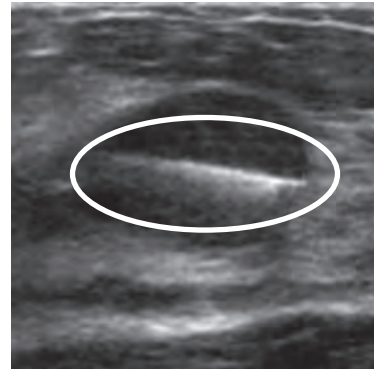
Top Hat



Mini Cork



SecurMark Mammography

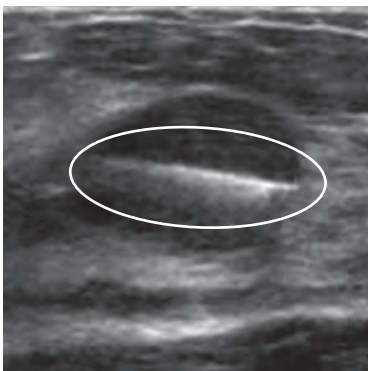
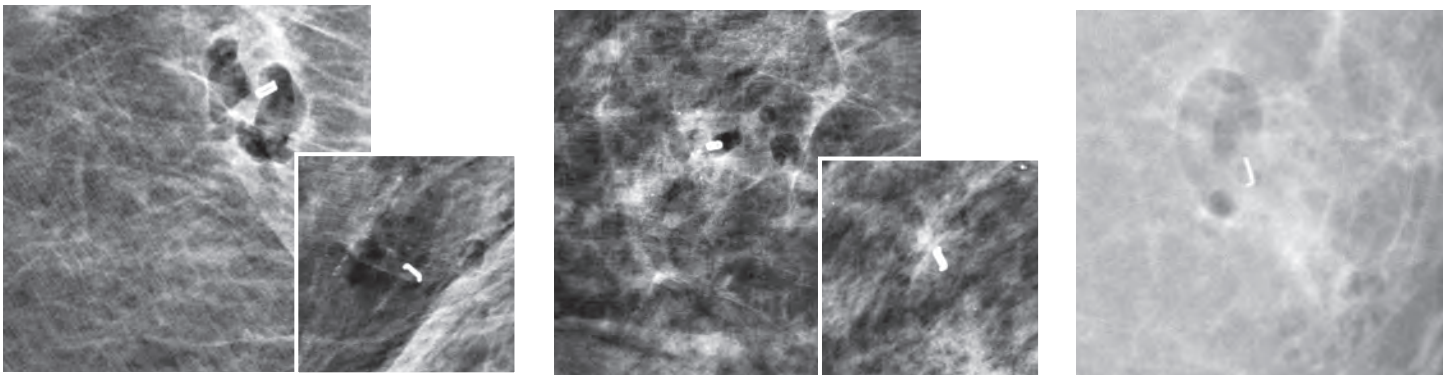


SecurMark for Celero in Ultrasound

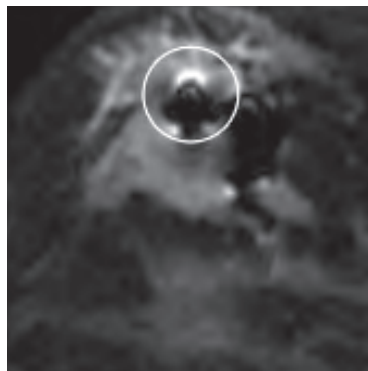
## SecurMark Stainless Steel Options

To provide a wide array of biopsy site marking options, the SecurMark family also includes stainless steel markers in three shapes. Like the titanium versions, the stainless steel markers feature the bio-absorbable suture-like netting outer layer and are available for deployment compatible with Hologic biopsy devices.

### SecurMark under Mammography



SecurMark under Ultrasound



SecurMark under MRI

### Available Shapes



Buckle



Infinity



Stoplight

# TriMark<sup>®</sup> and CeleroMark<sup>™</sup>

## Biopsy Site Markers

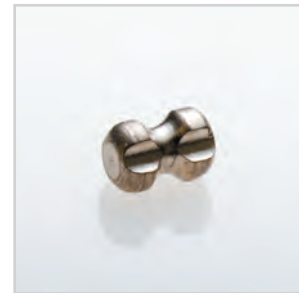
TriMark marker is our original biopsy site marking solution for use with the ATEC and Eviva breast biopsy systems. Its rigid marker deployment system provides access to the biopsy site. TriMark biopsy site marker can be used with all ATEC and Eviva needle options, including MRI.

CeleroMark biopsy site marker is designed for use with the Celero and Sertera biopsy devices. CeleroMark biopsy site marker features an end-deploy beveled tip for smooth marker deployment under ultrasound-guided breast biopsy procedures.

Both TriMark and CeleroMark site markers are comprised of bio-compatible titanium and are available in two shapes, the cork and the hourglass.



Cork



Hourglass

# Advanced Breast Health Solutions in all imaging modalities


Hologic offers an extensive line of comprehensive breast biopsy solutions designed to provide compassionate intervention and treatment.



**Ultrasound**

**Stereotactic**

**MRI**

	👁️ Tumark® Marker						👁️ SecurMark® Marker					🌟 TriMark® Marker	
Deployment Modality													
Ultrasound	✓	✓	✓	✓	✓	✓	✓	✓	✓	✓	✓	✓	✓
Stereotactic	✓	✓	✓				✓	✓	✓	✓	✓	✓	✓
MRI							✓	✓	✓			✓	✓

**Innovation** starts with the willingness to listen and the ability to understand. By leveraging the knowledge and insight of leading physicians, technologists and administrators, Hologic provides more choices for ultrasound-guided breast biopsy, from partial to complete removal of benign lesions to sampling of breast tissue for diagnostic review.

**Our goal is to support compassionate intervention for all patients.**

[www.hologic.com](http://www.hologic.com) | +1.800.442.9892

**Hologic Headquarters  
United States / Latin America**  
250 Campus Drive  
Marlborough, MA 01752  
USA Tel: +1.508.263.2900  
Sales: +1.781.999.7453  
Fax: +1.781.280.0668  
Email: [info@hologic.com](mailto:info@hologic.com)

**Hologic Europe**  
Everest (Cross Point)  
Leuvensesteenweg  
250A 1800  
Vilvoorde, Belgium  
Tel: +32.2.711.4680  
Fax: +32.2.725.2087

**Hologic Asia Pacific**  
7th Floor, Biotech Centre 2  
No. 11 Science Park West Avenue  
Hong Kong Science Park  
Shatin, New Territories, Hong Kong  
Tel: +852.3748.7700  
Fax: +852.3526.0723

**Hologic Australia**  
Suite 402, Level 4  
2 Lyon Park Road  
Macquarie Park NSW 2113  
Australia  
Tel: +61.2.9888.8000  
Fax: +61.2.9870.7555

SS-00087 Rev.006 (11/23) Hologic Inc. ©2023 All rights reserved. Hologic, ATEC, Celero, CeleroMark, Eviva, SecurMark, Sertera, TriMark, The Science of Sure, and associated logos are trademarks and/or registered trademarks of Hologic, Inc., and/or its subsidiaries in the United States and/or other countries. This information is intended for medical professionals in the U.S. and other markets and is not intended as a product solicitation or promotion where such activities are prohibited. Because Hologic materials are distributed through websites, eBroadcasts and tradeshows, it is not always possible to control where such materials appear. For specific information on what products are available for sale in a particular country, please contact your local Hologic representative.